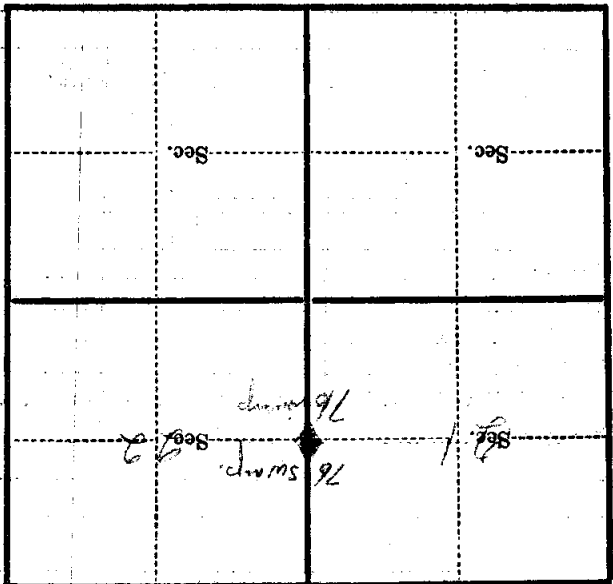


*Section from cut of N.W. 1/4 Sec. 2*  
*at East corner*

Corner again.

Metal Location Poster is on a tree ..... inches diameter, on the side of ..... from which this Corner bears ..... chains distant.  
Give any further facts which will aid in finding this



(Make sketch of topography near Corner)

T 147N R 31W  
Mer. P-13

Form 874-9—Revised May, 1913  
**U. S. Department of Agriculture**  
**FOREST SERVICE**

P13  
*posted*  
 P-13

..... NATIONAL FOREST

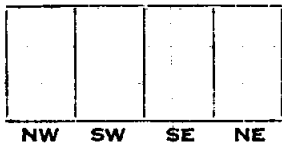
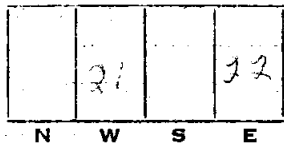
**CORNERS OF THE PUBLIC SURVEY**

T. 147N R. 31 W 54 Mer.

1/4 Corner common to Sections  
 ....., 21, and 22

Corner consists of a 1 1/2" stake (~~post~~) in place  
 State condition good

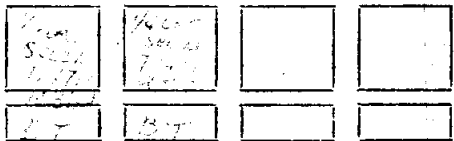
Dimensions above ground 8 inches  
 Sketch grooves, letters, figures, or notches, on proper face or edge.



Mound of ..... is located .....

Pits are located .....

Sketch markings of Bearing Trees (or Rocks) in proper box and fill blanks below, giving bearings from Corner to Trees and Distances in Links.



Species Cedar Tamarac  
 Diameter 7" 5"  
 Bearing E 33° W N 70° W  
 Distance 12.1 13.4

Do you believe this to be a genuine Land Office Corner? Yes

If not, why? .....

*John D. Hagen*  
 (Signature)  
2/20/38  
 (Date)  
*Comptroller*  
 (Title)

P-13

Sec. 1	Sec. 2	Sec. 3	Sec. 4
Sec. 5	Sec. 6	Sec. 7	Sec. 8

Metal Location Poster is on a .....  
 tree ..... inches diameter, on the .....  
 side of .....  
 from which this Corner bears .....  
 ..... chains distant.

Give any further facts which will aid in finding this  
 Corner again.

*Yr corner 20 feet north  
 from water edge - big hole*

P13

Form 874-9—Revised May, 1918

U. S. Department of Agriculture  
FOREST SERVICE

NATIONAL FOREST

CORNERS OF THE PUBLIC SURVEY

T. 12 N R. 37 W Mer.

Corner common to Sections  
12, 13, and 14

Corner consists of a stone (not) in place  
State condition good

Dimensions above ground 12 inches

Sketch grooves, letters, figures, or notches, on proper face or edge.

CARDINAL POSITION

DIAGONAL POSITION

			32
--	--	--	----

--	--	--	--

N W S E

NW SW SE NE

Mound of \_\_\_\_\_ is located \_\_\_\_\_

Pits are located \_\_\_\_\_

Sketch markings of Bearing Trees (or Rocks) in proper box and fill blanks below, giving bearings from Corner to Trees and Distances in Links.


Species Quercus

Diameter 8 1/2

Bearing N 75 W

Distance 120

Do you believe this to be a genuine Land Office Corner? Yes

If not, why? \_\_\_\_\_

(Signature)