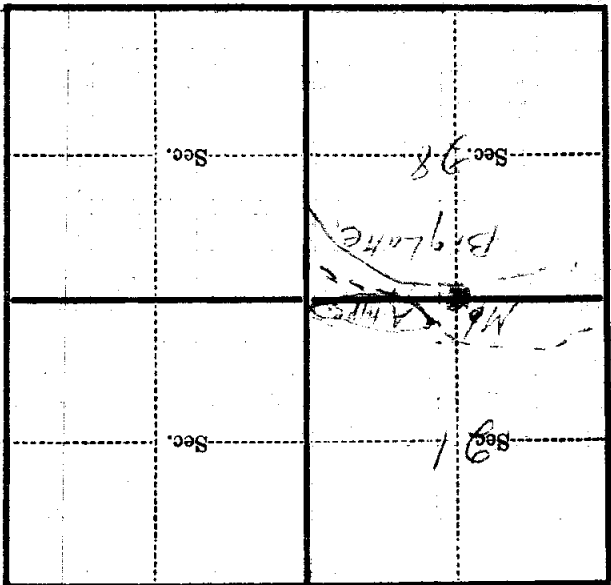


Corner again.  
Big Lake 1 ch. south  
Lines cut out  
and going east and west 6 ch.

Metal Location Poster is on a tree inches diameter, on the side of from which this Corner bears chains distant. Give any further facts which will aid in finding this



(Make sketch of topography near Corner)

T 147 N R 31 W  
S 24  
Mer. R-11

U. S. Department of Agriculture  
FOREST SERVICE

*R-11*  
*parted*  
*R-11*

NATIONAL FOREST

CORNERS OF THE PUBLIC SURVEY

T. 147 N R. 31 W 5th Mer.

1/4 Corner common to Sections  
21, and 22

Corner consists of a iron stake (not) in place  
State condition good

Dimensions above ground 21" inches  
Sketch grooves, letters, figures, or notches, on proper face or edge.

CARDINAL POSITION

DIAGONAL POSITION

Sec 21		Sec 22	
N	W	S	E

NW	SW	SE	NE

Mound of \_\_\_\_\_ is located \_\_\_\_\_

Pits are located \_\_\_\_\_

Sketch markings of Bearing Trees (or Rocks) in proper box and fill blanks below, giving bearings from Corner to Trees and Distances in Links.

<u>1/2 sec</u> <u>7474</u> <u>10 3/4 W</u>	<u>1/2 sec</u> <u>7474</u> <u>10 3/4 W</u>		
<u>BT</u>	<u>BT</u>		

Species White Ash White Ash  
Diameter 7" 7"  
Bearing N S  
Distance 10 ch 130 ch

Do you believe this to be a genuine Land Office Corner? Yes

If not, why? \_\_\_\_\_

*John R. Hagan*  
(Signature)

2/20/38  
(Date)

*Comptroller*  
(Title)

*R-11*