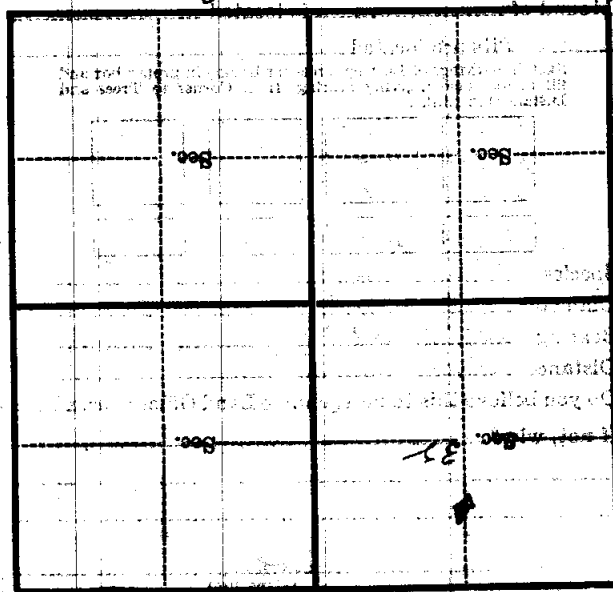


Corner again:

Metal Location Post is on a  
tree 13 inches diameter, on the  
side of  
from which this Corner bears  
chains distant



(Make sketch of topography near Corner)

U. S. Department of Agriculture  
FOREST SERVICE

W7

W-7

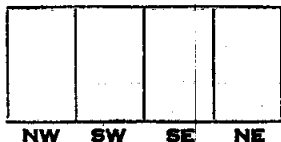
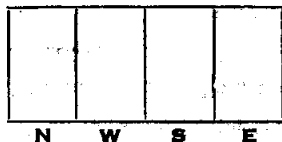
Chippewa NATIONAL FOREST

CORNERS OF THE PUBLIC SURVEY

T. 147 R. 31 5<sup>th</sup> Mer.  
CN # 5 36 Corner common to Sections

\_\_\_\_\_, \_\_\_\_\_, and 32  
Corner consists of a St. O (not) in place  
State condition Good

Dimensions above ground \_\_\_\_\_ 12 inches  
Sketch grooves, letters, figures, or notches, on proper face or edge.  
CARDINAL POSITION DIAGONAL POSITION



Mound of \_\_\_\_\_ is located \_\_\_\_\_

Pits are located \_\_\_\_\_

Sketch markings of Bearing Trees (or Rocks) in proper box and fill blanks below, giving bearings from Corner to Trees and Distances in Links.

T-147 R-31 S-32	T-147 R-31 S-32		
B7	B7		

Species Cham. Maple \_\_\_\_\_  
Diameter 10" 11" \_\_\_\_\_  
Bearing S27° E S85° W \_\_\_\_\_  
Distance 14 ch 26 ch \_\_\_\_\_

Do you believe this to be a genuine Land Office Corner? Yes  
If not, why? \_\_\_\_\_

[Signature]  
(Signature)

(Date)

(Title)

W-7