

U. S. Department of Agriculture

FOREST SERVICE

Chippewa NATIONAL FOREST

C-17
already Posted

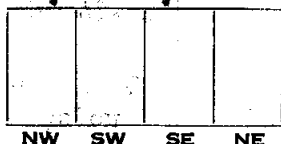
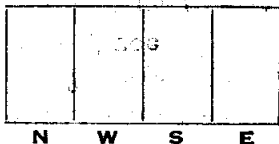
CORNERS OF THE PUBLIC SURVEY

T. 147 N. R. 30 W. 5 th P. Mer.
Quarter Corner common to Sections

2, and 3

Corner consists of a (not) in place
State condition Cor. in center line of road

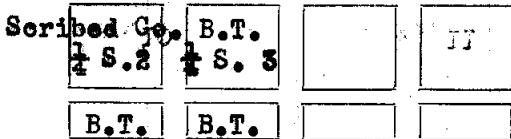
Dimensions above ground inches
Sketch grooves, letters, figures, or notches, on proper face or edge.
CARDINAL POSITION DIAGONAL POSITION



Mound of is located

Pits are located

Sketch markings of Bearing Trees (or Rocks) in proper box and fill blanks below, giving bearings from Corner to Trees and Distances in Links.



Species R. Pine Aspen
Diameter 12" 7"
Bearing S. 79° E. S. 74° W.
Distance 80 39

Do you believe this to be a genuine Land Office Corner? Yes
If not, why?

K. Styer

(Signature)

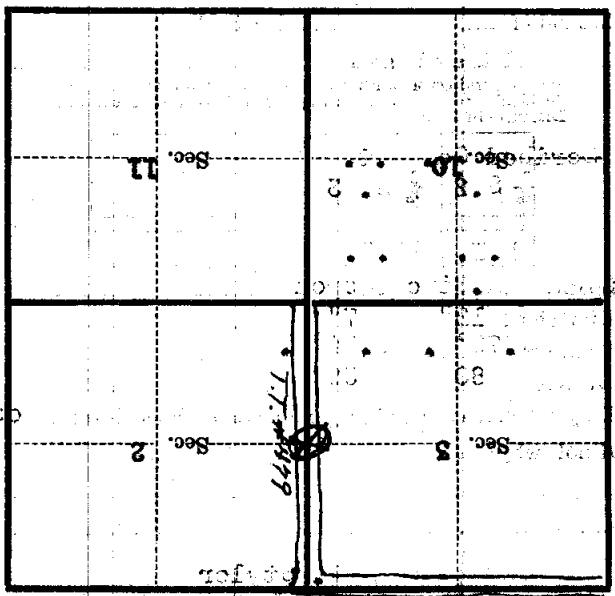
Compass Man

(Title)

2/10/38

(Date)

Metal Location Poster is on a
 tree 7 inches diameter, on the East
 side of Tree
 from which this Corner bears N. 74. E.
 0.39 chains distant.
 Give any further facts which will aid in finding this
 Corner again.



(Make sketch of topography near Corner)

T. 147 N. R. 50 W. S. 4th R. Mer.