

U. S. Department of Agriculture

FOREST SERVICE

C-9

Chippewa NATIONAL FOREST

CORNERS OF THE PUBLIC SURVEY

T. 147 N. R. 30 W. 5th. P. Mer. Quarter Corner common to Sections

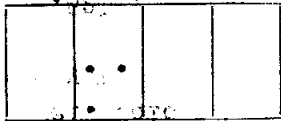
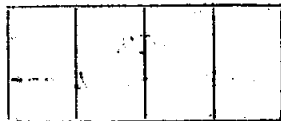
4, and 5

Corner consists of a Cedar Post (not) in place State condition Good in stone mound.

Dimensions above ground Sec. Line Post 60 inches Sketch grooves, letters, figures, or notches, on proper face or edge.

CARDINAL POSITION

DIAGONAL POSITION



Mound of is located

Pits are located

Sketch markings of Bearing Trees (or Rocks) in proper box and fill blanks below, giving bearings from Corner to Trees and Distances in Links.



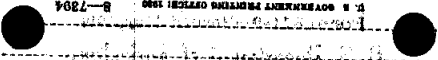
Species Diameter Bearing Distance

Do you believe this to be a genuine Land Office Corner Yes If not, why? Stone mound, corner marked by old settlers.

John A. Gjelhaug (Signature)

Jr. Civil Eng. (Title)

10/27/39 (Date)



SECTION 8

CORNER OF THE SECTION

SECTION 8

SECTION 8

SECTION 8

SECTION 8

SECTION 8

SECTION 8

SECTION 8

SECTION 8

SECTION 8

SECTION 8

SECTION 8

SECTION 8

SECTION 8

SECTION 8

SECTION 8

SECTION 8

SECTION 8

SECTION 8

SECTION 8

SECTION 8

SECTION 8

SECTION 8

SECTION 8

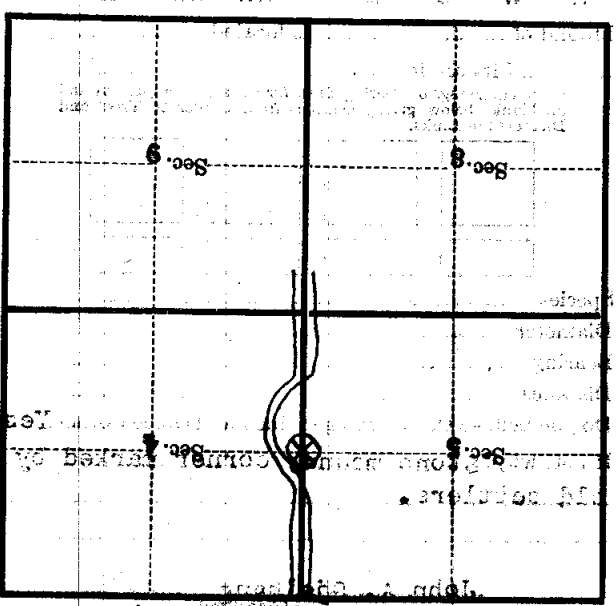
SECTION 8

SECTION 8

SECTION 8

SECTION 8

SECTION 8



(Make sketch of topography near Corner)

T 1478 R. 30 S. 5th E. Mer.