

U. S. Department of Agriculture
FOREST SERVICE

A-25

CHIPPENAW NATIONAL FOREST

CORNERS OF THE PUBLIC SURVEY

T. 147 R. 29 5 Mer.

SECTION Corner common to Sections

1, 6, 31, and 36

Corner consists of a G.L.D. Wood post, (not) in place
State condition Pear

Dimensions above ground 3' inches

Sketch grooves, letters, figures, or notches, on proper face or edge.

CARDINAL POSITION

DIAGONAL POSITION

5-6			
7-11			
9-13			

N W S E

NW SW SE NE

Mound of _____ is located _____

Pits are located _____

Sketch markings of Bearing Trees (or Rocks) in proper box and fill blanks below, giving bearings from Corner to Trees and Distances in Links.

5-6
T147
R26

X

X

X

B.T.

Species Chop

Diameter 1 1/2"

Bearing S 45° E

Distance 1/2 ch.

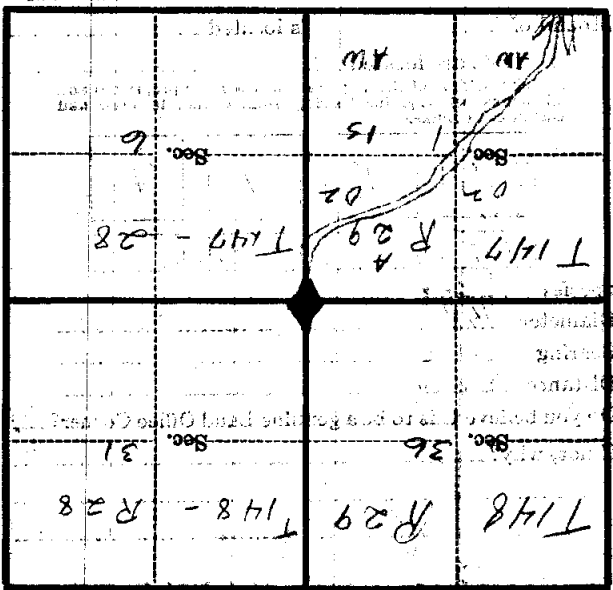
Do you believe this to be a genuine Land Office Corner? yes
If not, why? _____

S. Z. ...
(Signature)

2/25/35
(Date)

Estimator
(Title)

(Make sketch of topography near Corner)



Metal Location Poster is on a Fence Post 5" inches diameter, on the South side of Post.

from which this Corner bears 3^{1/4} miles South of Original Post chains distant.

Give any further facts which will aid in finding this

Corner again.

COMMISSIONERS OF THE PUBLIC SURVEY

U. S. Department of Agriculture

FOREST SERVICE

Chippewa NATIONAL FOREST

Plotted A-25

CORNERS OF THE PUBLIC SURVEY

T. 147 R. 29 5 Mer.

Section Corner common to Sections

1, 6, 31, and 36

Corner consists of a G. & O. Wood post in place

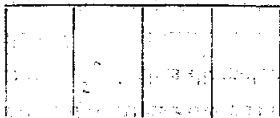
State condition Poor

Dimensions above ground 3' inches

Sketch grooves, letters, figures, or notches, on proper face or edge.

CARDINAL POSITION

DIAGONAL POSITION



N W S E



NW SW SE NE

Mound of is located

Pits are located

Sketch markings of Bearing Trees (or Rocks) in proper box and fill blanks below, giving bearings from Corner to Trees and Distances in Links.



BT

Species Elm

Diameter 14"

Bearing S-45°E

Distance 1/2 chain

Do you believe this to be a genuine Land Office Corner? Yes

If not, why?

S. Zimmerman (Signature)

2/25/35 (Date)

Estimator (Title)

A-25

Corner again.

Give any further facts which will aid in finding this

~~Corner post~~ chains distant.

from which this Corner bears

3 links south of

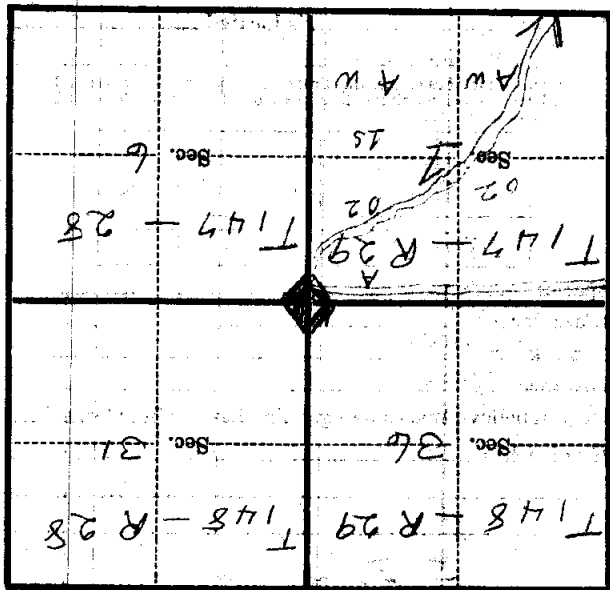
side of

6 feet

8" inches diameter, on the south

Metal Location Poster is on a

Corner post



(Make sketch of topography near Corner)

Mer.

R

T

9-25