

U. S. Department of Agriculture
FOREST SERVICE

p-21

Chippewa NATIONAL FOREST

CORNERS OF THE PUBLIC SURVEY

T. 147N R. 29W 5th Mer.

Quarter Corner common to Sections

.....,, 23, and 24

Corner consists of a Iron pipe with (dot) in place
State condition brass cap

Dimensions above ground 2"-12" inches

Sketch grooves, letters, figures, or notches, on proper face or edge.

CARDINAL POSITION

DIAGONAL POSITION

--	--	--	--

N W S E

--	--	--	--

NW SW SE NE

Mound of is located

Pits are located

Sketch markings of Bearing Trees (or Rocks) in proper box and fill blanks below, giving bearings from Corner to Trees and Distances in Links.

+	+		
S/23	S/24		
BT	BT		

Species Spruce Cedar

Diameter 6 6

Bearing S18W S61E

Distance .20 .22

Do you believe this to be a genuine Land Office Corner? Yes

If not, why?

Walter Haberle

(Signature)

8/23/40
(Date)

Proj. Assist.
(Title)

p-21

DATE: _____

CORNERS OF THE PUBLIC SURVEY

SECTION

Corner signs: _____
Give any further facts which will aid in finding the

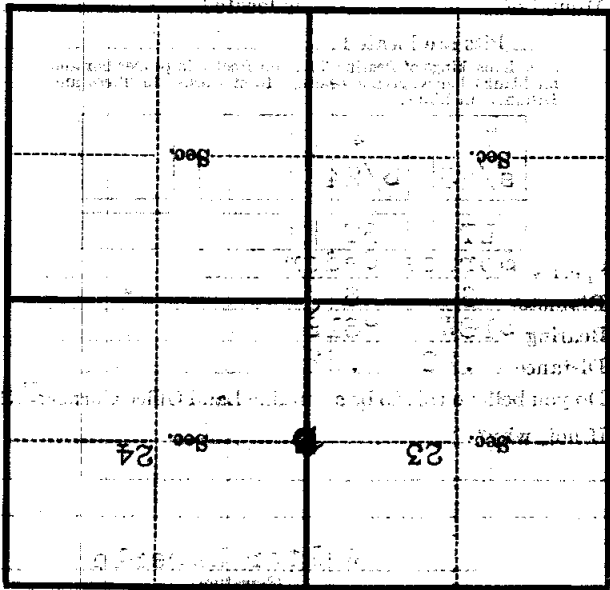
chains distant

from which this Corner bears

side of _____

tree _____ inches diameter; on the

Metal Location Poster is on a **The berrling trees**



Make sketch of topography near Corner

Met
p-21

5th

R. 29

T. 142N