

U. S. Department of Agriculture
FOREST SERVICE

2-1

Chippewa NATIONAL FOREST

CORNERS OF THE PUBLIC SURVEY

T. 146 - W. R. 22 29 5th Mer.

SECTION Corner common to Sections
21, 26, 31, and 1

Corner consists of a slap type Brass Cap (not) in place

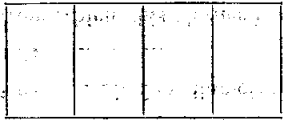
State condition good

Dimensions above ground _____ inches

Sketch grooves, letters, figures, or notches, on proper face or edge.

CARDINAL POSITION

DIAGONAL POSITION



N W S E

NW SW SE NE

Mound of _____ is located _____

Pits are located _____

Sketch markings of Bearing Trees (or Rocks) in proper box and fill blanks below, giving bearings from Corner to Trees and Distances in Links.

T146 R28 56	T147 R29 51	T147 R29 536	T147 R28 531
BT	BT	BT	BT

Species Aspen Asp Aspen Aspen

Diameter 10 6 10 8

Bearing S10°E S43°E N15°W N64°E

Distance 13 33 19 21

Do you believe this to be a genuine Land Office Corner? Yes

If not, why? _____

(Signature)

(Date)

(Title)

115

U.S. Department of Agriculture

FOREST SERVICE

CORNERS OF THE SURVEY

Give any further facts which will aid in finding this

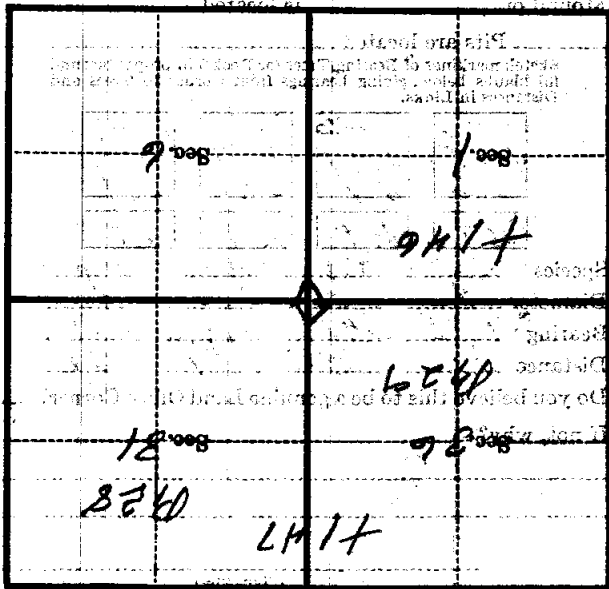
corner distant

from which this corner bears

side of

tree inches diameter, on the

Metal Location Poster is on a



(Make sketch of topography near corner)

T. 142 N. R. 28 E. Mer. 2-1

U. S. Department of Agriculture
FOREST SERVICE

21

~~Chicago~~ NATIONAL FOREST
CORNERS OF THE PUBLIC SURVEY

T. 106 - WR 22 29 5 1/2 Mer.

SECTION Corner common to Sections

21, 22, 6, and 1

Corner consists of a Slope BR (No) in place

State condition 9000

Dimensions above ground 17 inches

Sketch grooves, letters, figures, or notches, on proper face or edge.

CARDINAL POSITION

DIAGONAL POSITION

N W S E NW SW SE NE

Mound of _____ is located _____

Pits are located _____

Sketch markings of Bearing Trees (or Rocks) in proper box and fill blanks below, giving bearings from Corner to Trees and Distances in Links.

<u>T 146</u>	<u>T 147</u>	<u>T 148</u>	<u>T 147</u>
<u>56</u>	<u>51</u>	<u>536</u>	<u>551</u>
<u>BT</u>	<u>BT</u>	<u>BT</u>	<u>BT</u>

Species ASB ASB ASB ASB

Diameter 10 10 10 10

Bearing S 10° E S 43° E N 55° W N 61° E

Distance 13 33 19 21

Do you believe this to be a genuine Land Office Corner?

If not, why?

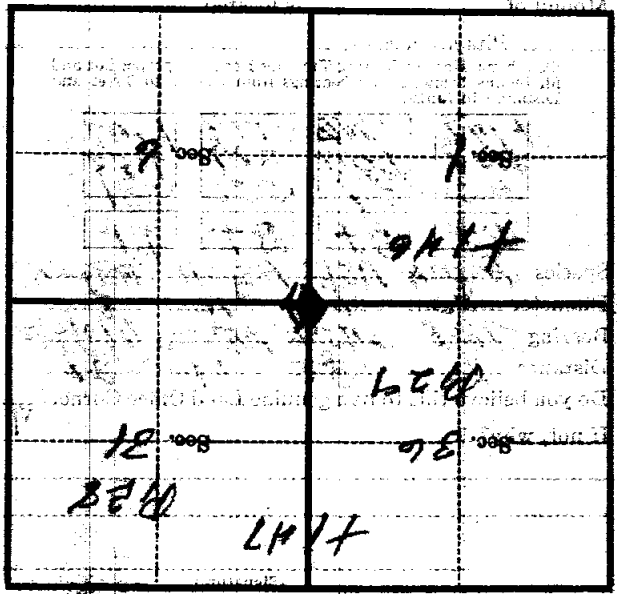
(Signature)

(Date)

(Title)

CORNER OF THE PUBLIC SURVEY

Metal Location Poster is on a tree inches diameter, on the side of from which this Corner bears chains distant. Give any further facts which will aid in finding this Corner again.



(Make sketch of topography near Corner)

U. S. Department of Agriculture
FOREST SERVICE

2-1

Chippewa NATIONAL FOREST

CORNERS OF THE PUBLIC SURVEY

T146 & 147 R. 28 & 29W 5th P. Mer.

Section Corner common to Sections

31, 36, 6, and 1

Corner consists of a 6.0. pipe & brass cap in place

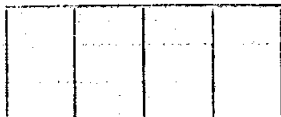
State condition good--est. 1932

Dimensions above ground _____ inches

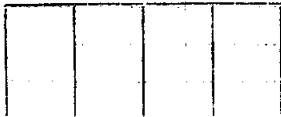
Sketch grooves, letters, figures, or notches, on proper face or edge.

CARDINAL POSITION

DIAGONAL POSITION



N W S E



NW SW SE NE

Mound of _____ is located _____

Pits are located _____

Sketch markings of Bearing Trees (or Rocks) in proper box and fill blanks below, giving bearings from Corner to Trees and Distances in Links.

T146N
R28W
36.BT

T146N
R29W
31.BT

T147N
R29W
336BT

T147N
R28W
331.BT

SE

SW

NW

NE

Species Aspen Ash Aspen Aspen

Diameter 10.2" 6.1" 10.1" 8.6"

Bearing S10°E S43°W N25°W N64°E

Distance 13.7' 33.6' 19.4' 21'

Do you believe this to be a genuine Land Office Corner? Yes

If not, why? _____

W. Banks

(Signature)

10/10/34

(Date)

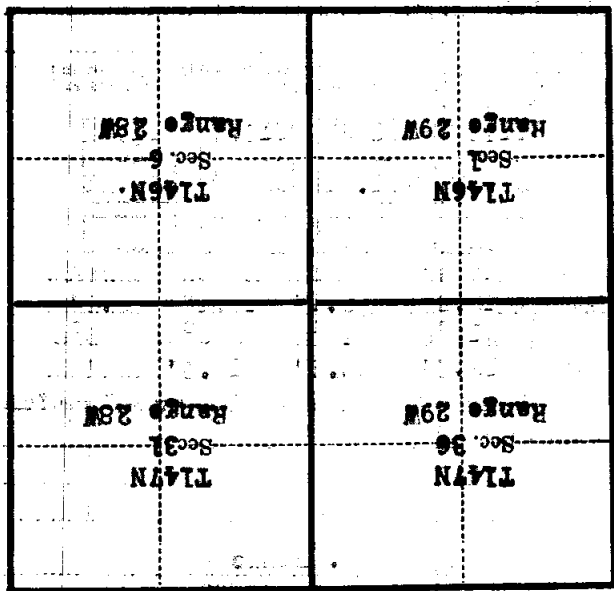
Tech. Foreman

(Title)

115

Corner again.
Pipe in opening. Hooks piled
around pipe. Aspen pole types.

Metal Location Poster is on a
tree inches diameter, on the
side of from which this Corner bears
chains distant.
Give any further facts which will aid in finding this



(Make sketch of topography near Corner)

Form 674-0—Revised May, 1918
 U. S. Department of Agriculture
 FOREST SERVICE

2-1

Chippewa NATIONAL FOREST

CORNERS OF THE PUBLIC SURVEY

T146 147N R. 28 29W 5th Mer.

Section Corner common to Sections
 36, 31, 1, and 6

Corner consists of a Iron pipe (not) in place
 State condition with brass cap

Dimensions above ground _____ inches
 Sketch grooves, letters, figures, or notches, on proper face or edge.
 CARDINAL POSITION DIAGONAL POSITION

N	W	S	E

NW	SW	SE	NE

Mound of _____ is located _____

Pits are located _____

Sketch markings of Bearing Trees (or Rocks) in proper box and fill blanks below, giving bearings from Corner to Trees and Distances in Links.

T147N R29W S36	T147N R28W S31	T146N R29W S1	T146N R28W S6
BT	BT	BT	BT

Species <u>Aspen</u>	<u>Aspen</u>	<u>Elm</u>	<u>Aspen</u>
Diameter <u>8"</u>	<u>9"</u>	<u>6"</u>	<u>12"</u>
Bearing <u>N23W</u>	<u>N66E</u>	<u>S44W</u>	<u>S12E</u>
Distance <u>.30</u>	<u>.31</u>	<u>.51</u>	<u>.20</u>

Do you believe this to be a genuine Land Office Corner? Yes

If not, why? _____

Walter Haberle
 (Signature)

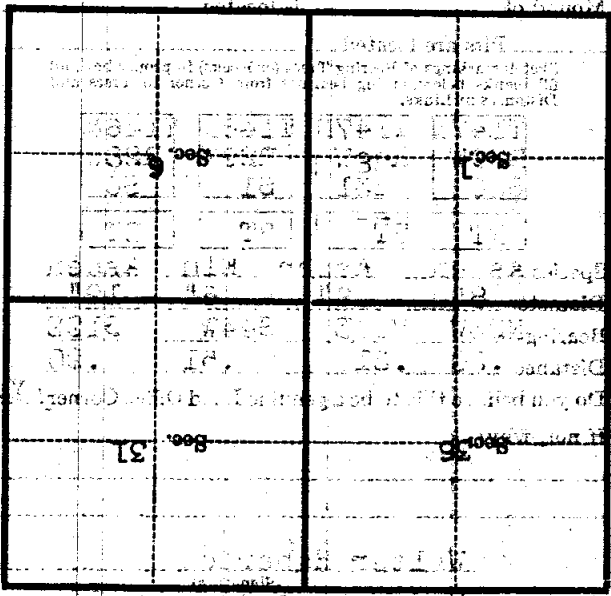
15/8/39
 (Date)

Leader
 (Title)

Department of Agriculture
FOREST SERVICE

CORNERS OF THE PUBLIC BURNING

Metal Location Poster is on a
tree inches diameter, on the
side of
from which this Corner bears
chains distant
Give any further facts which will aid in finding this
Corner again



(Make sketch of topography near Corner)