

Form 874-0—Revised May, 1918  
 U. S. Department of Agriculture  
 FOREST SERVICE

Chippewa NATIONAL FOREST J. 25

CORNERS OF THE PUBLIC SURVEY

T. 147N R. 27W 5th Mer.  
 Section Corner common to Sections  
 12, 7, 13, and 8

Corner consists of a Iron Mon. in place  
 State condition Just Erected

Dimensions above ground 6'-74-20 inches  
 Sketch grooves, letters, figures, or notches, on proper face or edge.

CARDINAL POSITION

DIAGONAL POSITION

T 147N			
R 27W	R 26W		
312		317	
5	3	5	8


N W S E

NW SW SE NE

Mound of \_\_\_\_\_ is located \_\_\_\_\_

Pits are located \_\_\_\_\_

Sketch markings of Bearing Trees (or Rocks) in proper box and fill blanks below, giving bearings from Corner to Trees and Distances in Links.

		T 147 R 26W S 18	T 147 R 27 S 13
BT	BT	BT	BT

Species NP NP LP N Pine  
 Diameter 8 1/2" 8 1/2" 10" 14"  
 Bearing N 60° E N 57° W S 82° E S 24° W  
 Distance 114 32 27 54

Do you believe this to be a genuine Land Office Corner? Yes

If not, why? \_\_\_\_\_

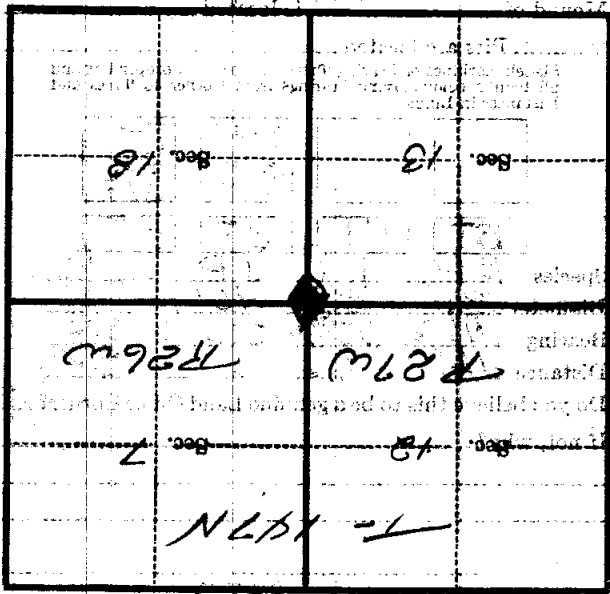
(Signature)

(Date)

(Title)

CORNERS OF THE PUBLIC SURVEY

Metal Location Poster is on a tree inches diameter, on the side of from which this Corner bears chains distant. Give any further facts which will aid in finding this Corner again.



(Make sketch of topography near Corners)

Form 874-9—Revised May, 1918  
U. S. Department of Agriculture  
FOREST SERVICE

*Copied  
Noted  
57  
J 25 '34*

NATIONAL FOREST

CORNERS OF THE PUBLIC SURVEY

T. 147 R. 27, 26 Mer. 5

Corner common to Sections

12, 13, 7, 18, and

Corner consists of a temp. stake 2' high (not) in place

State condition

Dimensions above ground \_\_\_\_\_ inches

Sketch grooves, letters, figures, or notches, on proper face or edge.

CARDINAL POSITION

DIAGONAL POSITION

--	--	--	--

N W S E

--	--	--	--

NW SW SE NE

Mound of \_\_\_\_\_ is located \_\_\_\_\_

Pits are located \_\_\_\_\_

Sketch markings of Bearing Trees (or Rocks) in proper box and fill blanks below, giving bearings from Corner to Trees and Distances in Links.


Species \_\_\_\_\_

Diameter \_\_\_\_\_

Bearing \_\_\_\_\_

Distance \_\_\_\_\_

Do you believe this to be a genuine Land Office Corner? \_\_\_\_\_

If not, why? \_\_\_\_\_

\_\_\_\_\_

\_\_\_\_\_

(Signature)

(Date)

(Title)

U. S. FOREST SERVICE

FOREST SERVICE

NATIONAL FOREST

# CORNERS OF THE PUBLIC SURVEY

Corner corner to section

28° N P N 6 0 N 53° E

Corner again.

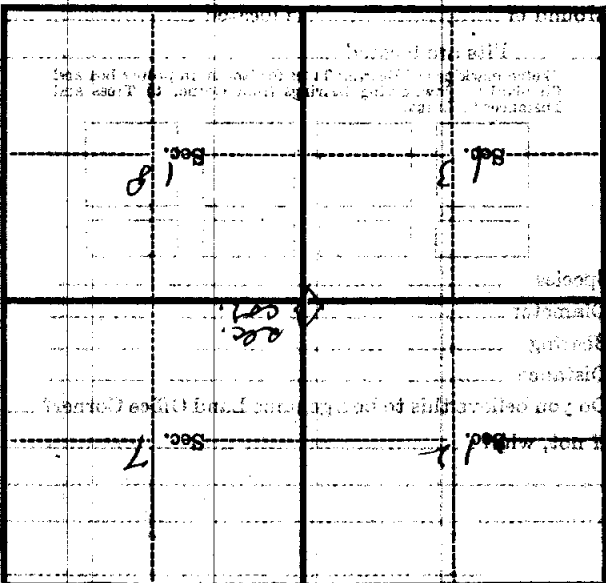
Give any further facts which will aid in finding this

from which this Corner bears

side of

tree inches diameter, on the

Metal Location Poster is on a



(Make sketch of topography near Corner)

U. S. Department of Agriculture  
FOREST SERVICE

J. 25

Chippewa NATIONAL FOREST

CORNERS OF THE PUBLIC SURVEY

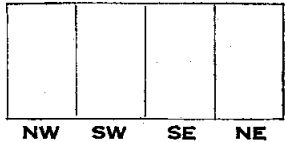
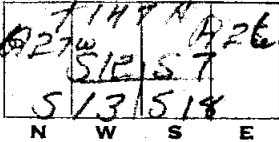
T. 147N R. 27W 5th Mer.

SECTION Corner common to Sections  
12, 7, 13, and 18

Corner consists of a Concrete mound in place  
State condition just built

Dimensions above ground 6" 24" - 20" inches

Sketch grooves, letters, figures, or notches, on proper face or edge.  
CARDINAL POSITION DIAGONAL POSITION



Mound of \_\_\_\_\_ is located \_\_\_\_\_

Pits are located \_\_\_\_\_

Sketch markings of Bearing Trees (or Rocks) in proper box and fill blanks below, giving bearings from Corner to Trees and Distances in Links.



B.T.

B.T.

B.T.

B.T.

Species	NP	NP	JP	WP
Diameter	36"	36"	10"	14"
Bearing	N60°E	N52°W	S82°E	S24°W
Distance	114	32	27	54

Do you believe this to be a genuine Land Office Corner? yes  
If not, why? \_\_\_\_\_

(Signature)

1936

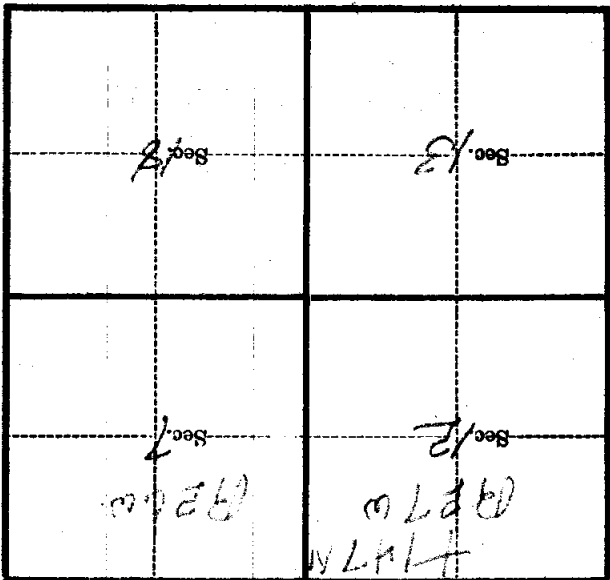
(Date)

(Title)

52

Metal Location Poster is on a tree \_\_\_\_\_ inches diameter, on the \_\_\_\_\_ side of \_\_\_\_\_ from which this Corner bears \_\_\_\_\_ chains distant.

Give any further facts which will aid in finding this Corner again.



(Make sketch of topography near Corner)

T. 147M R. 270 5th Mer.