

U. S. Department of Agriculture

FOREST SERVICE

Chippewa NATIONAL FOREST

P-17

CORNERS OF THE PUBLIC SURVEY

T. 147N R. 27W 57h Mer.

Corner common to Sections

22, and 23

Corner consists of a Iron Pipe (not) in place

State condition

Dimensions above ground 1" 28" inches

Sketch grooves, letters, figures, or notches, on proper face or edge.

CARDINAL POSITION

DIAGONAL POSITION

522	1/4	523
1938		

[Handwritten signature]			
-------------------------	--	--	--

N W S E

NW SW SE NE

Mound of is located

Pits are located

Sketch markings of Bearing Trees (or Rocks) in proper box and fill blanks below, giving bearings from Corner to Trees and Distances in Links.

523	522		
BT	BT		

Species JP NP

Diameter 5" 16"

Bearing STABE N30W

Distance 16 25

Do you believe this to be a genuine Land Office Corner?

If not, why?

(Signature)

(Date)

(Title)

81

U. S. Department of Agriculture

FOREST SERVICE

UNITED STATES FOREST SERVICE

CORNERS ON THE PUBLIC SURVEY

Section _____ Township _____ Range _____

County _____ State _____

Corner number of a section _____

Corner again:

Give any other notes which will aid in finding this

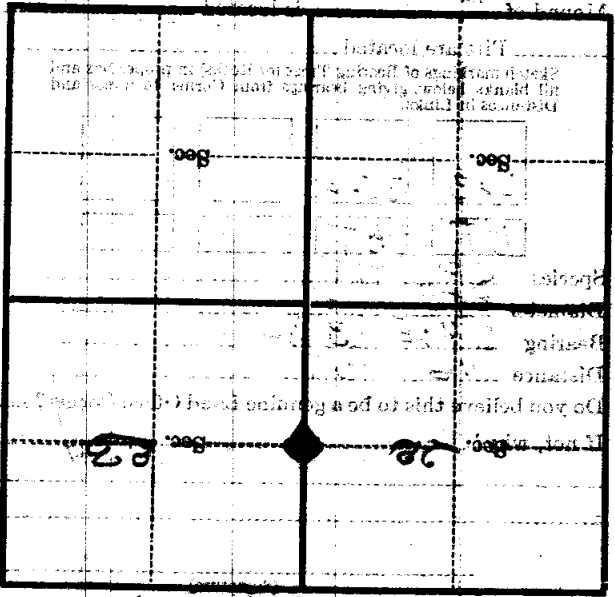
chain distant.

from which this corner bears

side of _____

tree _____ inches diameter, on the

Metal Location Posters on a



(Make sketch of topography near Corner)

T. 192N R. 89W Mer.

U. S. Department of Agriculture

FOREST SERVICE

P17 P

Chippewa NATIONAL FOREST

CORNERS OF THE PUBLIC SURVEY

T. 147th R. 27th 5th Mer.

Corner common to Sections 22, and 23

Corner consists of a iron pipe (not) in place

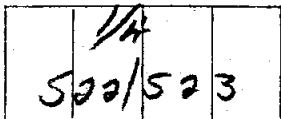
State condition new

Dimensions above ground 1 - - 28 inches

Sketch grooves, letters, figures, or notches, on proper face or edge.

CARDINAL POSITION

DIAGONAL POSITION



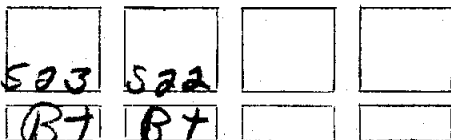
N W S E

NW SW SE NE

Mound of _____ is located _____

Pits are located _____

Sketch markings of Bearing Trees (or Rocks) in proper box and fill blanks below, giving bearings from Corner to Trees and Distances in Links.



Species JQ NO

Diameter 5 16

Bearing S74 1/2 E N30 1/2 W

Distance 16 85

Do you believe this to be a genuine Land Office Corner?

If not, why?

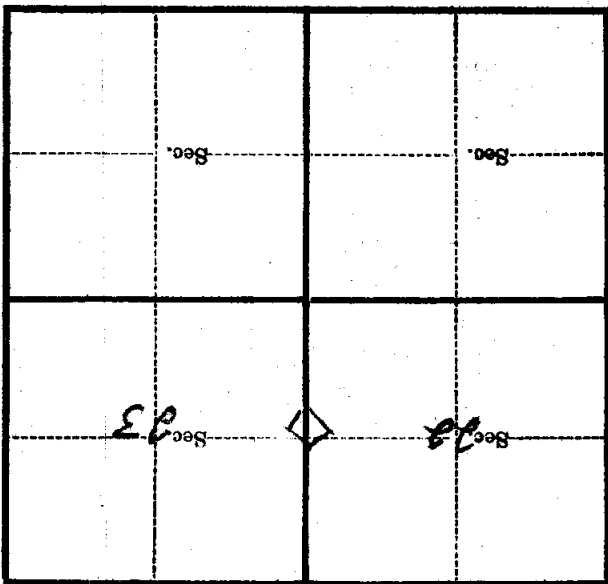
(Signature)

(Date)

(Title)

Metal Location Poster is on a _____ inches diameter, on the _____ side of _____ from which this Corner bears _____ chains distant.

Give any further facts which will aid in finding this Corner again.



(Make sketch of topography near Corner)

T. H. N. R. 376 574 Mer.

U. S. Department of Agriculture
FOREST SERVICE

P-17

Chippewa NATIONAL FOREST

CORNERS OF THE PUBLIC SURVEY

T. 142nd R. 22nd 5th Mer.

Corner common to Sections

22, and 23

Corner consists of a stone (not) in place

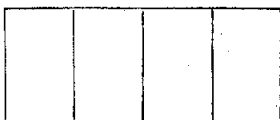
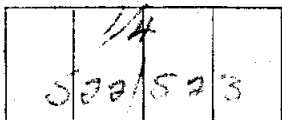
State condition new

Dimensions above ground 1 - 28 inches

Sketch grooves, letters, figures, or notches, on proper face or edge.

CARDINAL POSITION

DIAGONAL POSITION



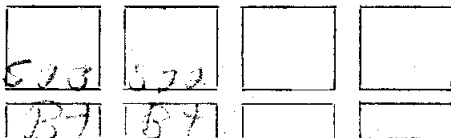
N W S E

NW SW SE NE

Mound of _____ is located _____

Pits are located _____

Sketch markings of Bearing Trees (or Rocks) in proper box and fill blanks below, giving bearings from Corner to Trees and Distances in Links.



Species JA NO

Diameter 5 16

Bearing S24 1/2 E N50 1/2 W

Distance 16 85

Do you believe this to be a genuine Land Office Corner?

If not, why? _____

(Signature)

(Date)

(Title)

57

Corner again.

Give any further facts which will aid in finding this

chains distant.

from which this Corner bears

side of

tree inches diameter, on the

Metal Location Poster is on a

	Sec.		Sec.
	Sec. 23		Sec. 22

(Make sketch of topography near Corner)

T. L. H. N. R. 2000 Mer.

5. 11. 14