

U. S. Department of Agriculture
FOREST SERVICE

A13

Chippewa NATIONAL FOREST

CORNERS OF THE PUBLIC SURVEY

T. 147N R. 27W 5 Mer.

Northeast Corner common to Sections

33, 34, 4, and 3

Corner consists of a Wooden Post (not) in place

State condition Good

Dimensions above ground 36" inches

Sketch grooves, letters, figures, or notches, on proper face or edge.

CARDINAL POSITION

DIAGONAL POSITION

--	--	--	--

SE	NE	NW	SW
Sec.	Sec.	Sec.	Sec.
33	4	3	34

N W S E

NW SW SE NE

Mound of None is located

Pits are located None

Sketch markings of Bearing Trees (or Rocks) in proper box and fill blanks below, giving bearings from Corner to Trees and Distances in Links.

Us			

Species Norway

Diameter 24"

Bearing N. 45° E

Distance .1 ch.

Do you believe this to be a genuine Land Office Corner? yes

If not, why?

James M. Stephens
(Signature)
Technical Examiner
(Title)

3/27/35

(Date)

30 Ch. East of Highway 46

Corner again.

Give any further facts which will aid in finding this

chains distant.

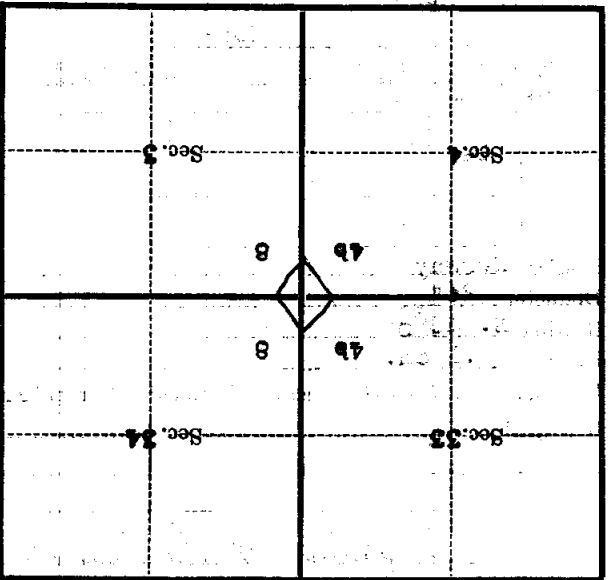
15

from which this Corner bears S 36° E

side of Tree

tree 10 inches diameter, on the South

Metal Location Poster is on a Norway



(Make sketch of topography near Corner)

T. 147N R. 27W S. Mer.

U. S. Department of Agriculture
FOREST SERVICE

A-13

Chippewa NATIONAL FOREST

CORNERS OF THE PUBLIC SURVEY

T. 147N R. R27W 5th Mer.

Section Corner common to Sections
33, 34, 4, and 3

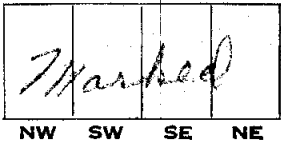
Corner consists of a Con. Iron (~~rod~~) in place
State condition Just Erected

Dimensions above ground 6"-24"-20" inches

Sketch grooves, letters, figures, or notches, on proper face or edge.

CARDINAL POSITION

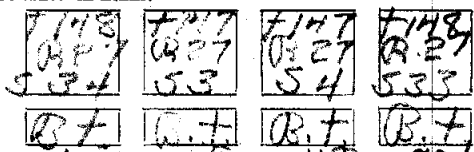
DIAGONAL POSITION



Mound of _____ is located _____

Pits are located _____

Sketch markings of Bearing Trees (or Rocks) in proper box and fill blanks below, giving bearings from Corner to Trees and Distances in Links.



Species N.B. 20" N.O. cedar
 Diameter 8" 17" 6" 6"
 Bearing N32 1/2 W S55 3/4 W N59 1/2 W N34 3/4 W
 Distance 50 48 80 23

Do you believe this to be a genuine Land Office Corner? yes
If not, why? _____

(Signature)

1936
(Date)

(Title)

15

Corner again.

Give any further facts which will aid in finding this

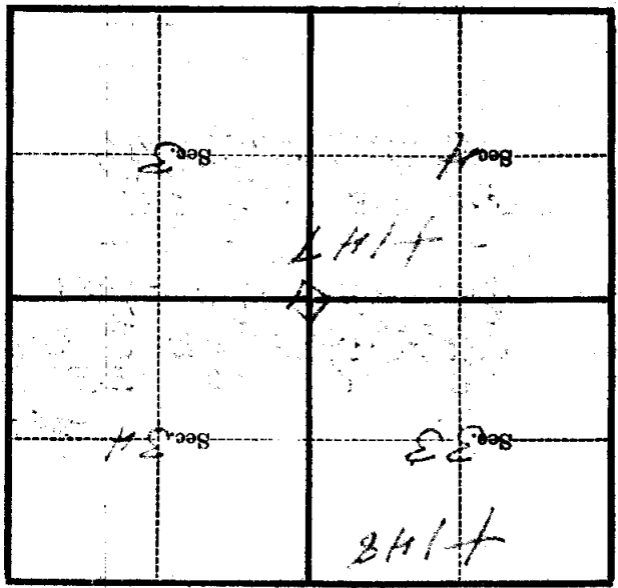
chains distant.

from which this Corner bears

side of

tree inches diameter, on the

Metal Location Poster is on a



(Make sketch of topography near Corner)

T. 142 R. 27 Mer. 5 1/4

U. S. Department of Agriculture
FOREST SERVICE

Shippen NATIONAL FOREST A-13

CORNERS OF THE PUBLIC SURVEY.

T. 147N R. R2W S. 4 - Mer.

Section Corner common to Sections
33, 34, 4, and 3

Corner consists of Iron Mon (net) in place
State condition Just E.

Dimensions above ground 6" x 2 1/4" x 20 inches

Sketch grooves, letters, figures, or notches, on proper face or edge.

CARDINAL POSITION

DIAGONAL POSITION

T 148 N	R 2 W
S 33	S 34
S 4	S 3
1036	
N	W
S	E

<u>Marked</u>			
NW	SW	SE	NE

Mound of _____ is located _____

Pits are located _____

Sketch markings of Bearing Trees (or Rocks) in proper box and fill blanks below, giving bearings from Corner to Trees and Distances in Links.

T148
R27
S 34

T147
R27
S 3

T147
R27
S 4

T148
R27
S 33

BT

BT

BT

BT

Species	<u>NP</u>	<u>NP</u>	<u>NP</u>	<u>Cedar</u>
Diameter	<u>8"</u>	<u>1 1/2"</u>	<u>6"</u>	<u>10"</u>
Bearing	<u>N37 1/2 E</u>	<u>S53 1/2 E</u>	<u>S9 1/4 W</u>	<u>N 1/2 W</u>
Distance	<u>50</u>	<u>48</u>	<u>80</u>	<u>23</u>

Do you believe this to be a genuine Land Office Corner?

If not, why?

[Signature]

(Signature)

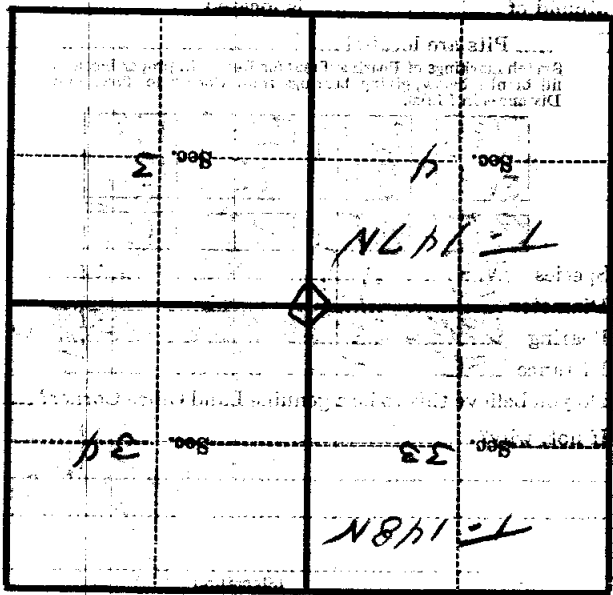
(Date)

(Title)

115

CORNERS OF THE TRACT SURVEY

Metal Location Poster is on a tree inches diameter, on the side of from which this Corner bears chains distant. Give any further facts which will aid in finding this Corner again.



(Make sketch of topography near Corner)

T. 147N R. 27W S. 77-Mer.

U. S. Department of Agriculture
FOREST SERVICE

A-13

Chippewa NATIONAL FOREST

CORNERS OF THE PUBLIC SURVEY

T. 147N R. R27W 5th Mer.

Section Corner common to Sections
33, 34, 4, and 3

Corner consists of a Con. Mon. in place

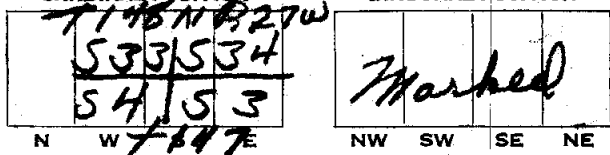
State condition just Erected

Dimensions above ground 6"-24"-20" inches

Sketch grooves, letters, figures, or notches, on proper face or edge.

CARDINAL POSITION

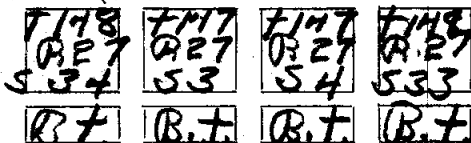
DIAGONAL POSITION



Mound of _____ is located _____

Pits are located _____

Sketch markings of Bearing Trees (or Rocks) in proper box and fill blanks below, giving bearings from Corner to Trees and Distances in Links.



Species	NDP.	2P.	NDP.	cedar
Diameter	8"	17"	6"	6"
Bearing	N32 1/2° E	S55 1/2° W	N57 1/2° W	N54 3/4° W
Distance	50	48	80	23

Do you believe this to be a genuine Land Office Corner? yes

If not, why? _____

(Signature)

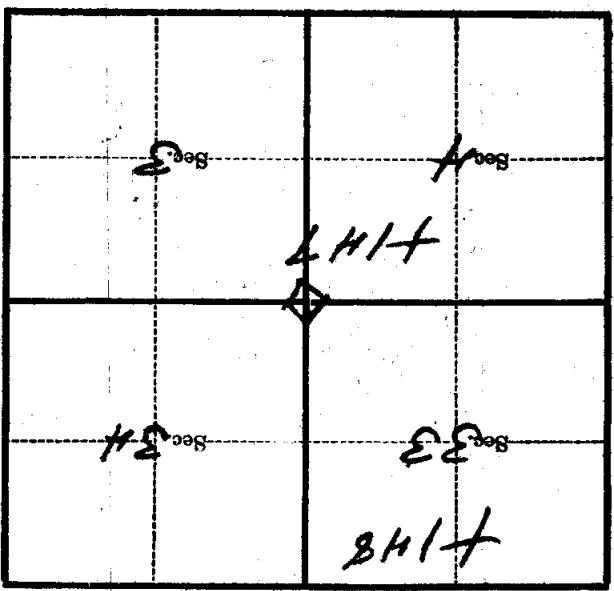
1936
(Date)

(Title)

15

Metal Location Poster is on a tree _____ inches diameter, on the side of _____ from which this Corner bears _____ chains distant.

Give any further facts which will aid in finding this Corner again.



(Make sketch of topography near Corner)

T. 142 R. 27 S. 5 T. Mer.