

U. S. Department of Agriculture
FOREST SERVICE

A-9

Chippewa NATIONAL FOREST

CORNERS OF THE PUBLIC SURVEY

T. 147 R. 27 5th Mer.

Sec. Corner common to Sections
32, 33, 5, and 4

Corner consists of a con. monument (not) in place

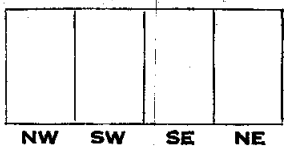
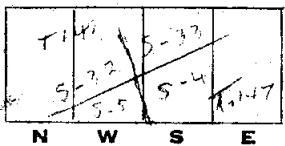
State condition new

Dimensions above ground 6" 17.0" x 2.0" inches

Sketch grooves, letters, figures, or notches, on proper face or edge.

CARDINAL POSITION

DIAGONAL POSITION



Mound of _____ is located _____

Pits are located _____

Sketch markings of Bearing Trees (or Rocks) in proper box and fill blanks below, giving bearings from Corner to Trees and Distances in Links.

T. 148
S-33

T. 147
S-4

T. 149
S-32

S-5

B.T.

B.T.

B.T.

B.T.

Species N. Pine N. Pine Aspen N. Pine

Diameter 6" 12" 1" 2 1/2"

Bearing N. 72° E S. 22° E N. 30° S. 60° W

Distance 1.03 1.13 .27 1.12

Do you believe this to be a genuine Land Office Corner? Yes

If not, why? _____

B. A. C.

(Signature)

1936

(Date)

(Title)

Corner again.

Give any further facts which will aid in finding this

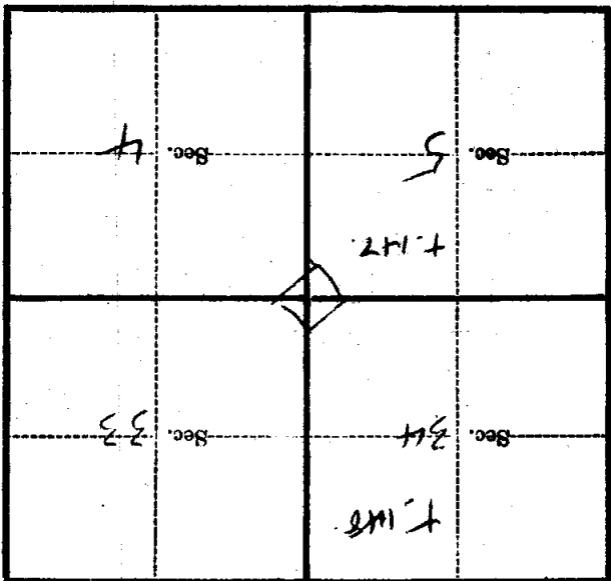
chains distant.

from which this Corner bears

side of

tree inches diameter, on the

Metal Location Poster is on a



(Make sketch of topography near Corner)

T. 147 R. 27 Mer. 5-34

U. S. Department of Agriculture
FOREST SERVICE

P
A9

Chippewa NATIONAL FOREST
CORNERS OF THE PUBLIC SURVEY

T. *147N* R. *22W* Mer.

Section *4* Corner common to Sections
32, 33, 5, and *4*

Corner consists of a *Log* (or) in place
State condition *Just located*

Dimensions above ground *6x24x20* inches

Sketch grooves, letters, figures, or notches, on proper face or edge.

CARDINAL POSITION

DIAGONAL POSITION

T 148 N R 22W	
S 32	S 33
S 5	S 4
T 147 N	
R 22 W	
N	E

<i>Marked</i>			
NW	SW	SE	NE

Mound of _____ is located _____

~~Pits are located~~

Sketch markings of Bearing Trees (or Rocks) in proper box and fill blanks below, giving bearings from Corner to Trees and Distances in Links.

T 148 R 27 S 33	T 149 R 27 S 4	T 148 R 27 S 32	S 5
BT	BT	BT	BT

Species *N P* *N P* *P* *N P*
Diameter *6"* *12"* *10"* *24"*
Bearing *N 77° E* *S 22° E* *N 30 1/2° W* *S 40° W*
Distance *1.03* *1.13* *29* *1.02*

Do you believe this to be a genuine Land Office Corner? *Yes*

If not, why? _____

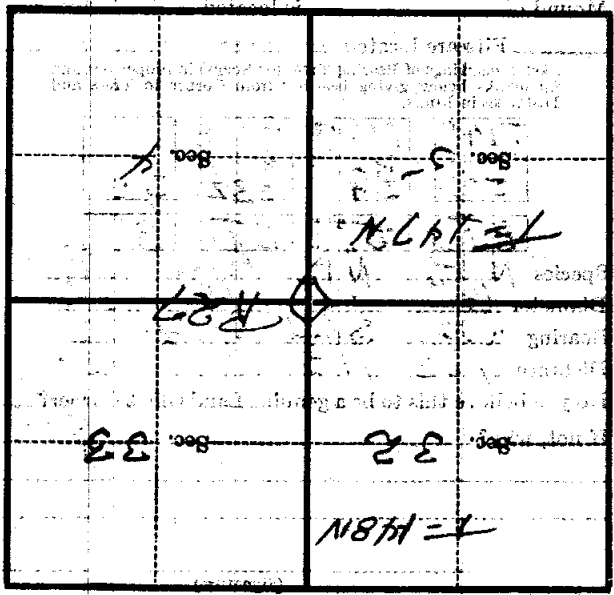
(Signature)

(Date)

(Title)

CORNERS OF THE PUBLIC SURVEY

Corner again, Give any further facts which will aid in finding this chain distant, from which this Corner bears side of tree inches diameter, on the Metal Location Poster is on a



(Make sketch of topography near Corner)

U. S. Department of Agriculture

FOREST SERVICE

Chippewa NATIONAL FOREST

A. 9

CORNERS OF THE PUBLIC SURVEY

T. 147 R. 27 Mer. 5th.

Sec. 32 33 5 4

Corner common to Sections

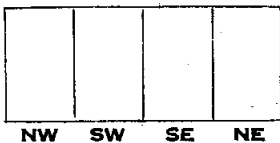
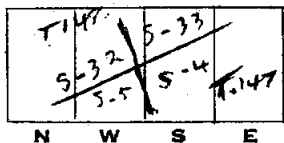
Corner consists of a CON. MONUMENT (not) in place
State condition NEW.

Dimensions above ground 6" 174" X 70" inches

Sketch grooves, letters, figures, or notches, on proper face or edge.

CARDINAL POSITION

DIAGONAL POSITION



Mound of _____ is located _____

Pits are located _____

Sketch markings of Bearing Trees (or Rocks) in proper box and fill blanks below, giving bearings from Corner to Trees and Distances in Links.

T. 147	T. 147	T. 147	
S-33	S-4	S-32	S-5
B.T.	B.T.	B.T.	B.T.

Species	N. Pine.	N. Pine.	Aspen.	N. Pine.
Diameter	6"	12"	8"	2 1/2"
Bearing	N. 72° E	S. 22° E	N. 30°	S. 40°
Distance	1.03	1.13	.29	1.02

Do you believe this to be a genuine Land Office Corner? Yes

If not, why? _____

B. B. B.

(Signature)

1936

(Date)

(Title)

Corner again.

Give any further facts which will aid in finding this

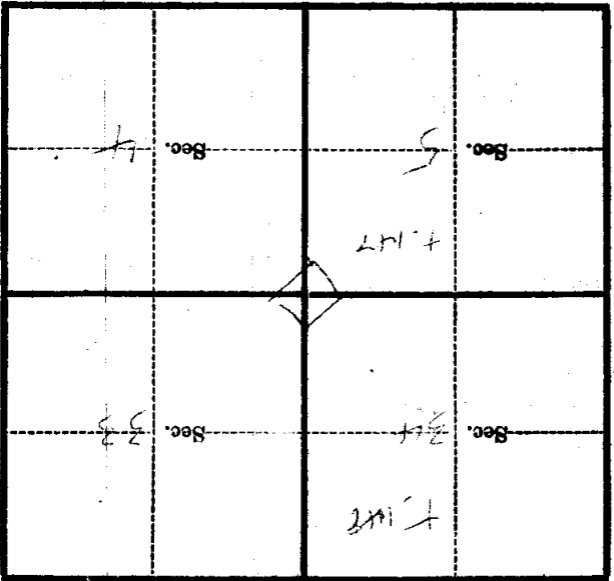
chain distant.

from which this Corner bears

side of

tree inches diameter, on the

Metal Location Poster is on a



(Make sketch of topography near Corner)

T. 147 R. 27 Mer.