

U. S. Department of Agriculture

FOREST SERVICE

X21

NATIONAL FOREST

CORNERS OF THE PUBLIC SURVEY

T. 147 R. 26 5th Mer.

4 Corner common to Sections 35, and 36

Corner consists of a (not) in place State condition

Dimensions above ground inches

Sketch grooves, letters, figures, or notches, on proper face or edge.

CARDINAL POSITION

DIAGONAL POSITION

Cardinal position diagram with four empty boxes for N, W, S, E.

N W S E

Diagonal position diagram with four empty boxes for NW, SW, SE, NE.

NW SW SE NE

Mound of is located

Pits are located

Sketch markings of Bearing Trees (or Rocks) in proper box and fill blanks below, giving bearings from Corner to Trees and Distances in Links.

Two rows of four empty boxes for sketching bearing trees or rocks.

Species

Diameter

Bearing

Distance

Do you believe this to be a genuine Land Office Corner? No

If not, why? could not find any thing

8-15-58

(Date)

(Signature)

(Title)

U. S. DEPARTMENT OF AGRICULTURE
BUREAU OF PLANT INDUSTRY
WASHINGTON, D. C.

Give any further facts which will aid in finding this
corner again.

From which this Corner bears
chain distant:
inches diameter, on the
side of
Metal Location Poster is on a

	Sec.		Sec.
	Sec.		Sec.

(Make sketch of topography near Corner)

Form 874-9—Revised May, 1918
 U. S. Department of Agriculture
 FOREST SERVICE

Posted
21

Chippewa NATIONAL FOREST
 CORNERS OF THE PUBLIC SURVEY

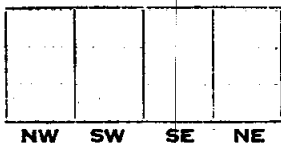
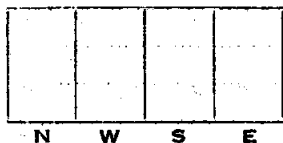
T. *147N* R. *26W* S. *5* *Prin.* Mer.

Section *31*, *36*, *1*, and *6* Corner common to Sections

Corner consists of a *Squared Wood post (Set)* in place
 State condition *Good*

Dimensions above ground *2' 6"* inches

Sketch grooves, letters, figures, or notches, on proper face or edge.



Mound of _____ is located _____

Pits are located _____

Sketch markings of Bearing Trees (or Rocks) in proper box and fill blanks below, giving bearings from Corner to Trees and Distances in Links.

<i>T146N</i> <i>R26W</i> <i>56</i>	<i>T147N</i> <i>R26W</i> <i>531</i>	<i>T147N</i> <i>R27W</i> <i>536</i>	<i>T146N</i> <i>R27W</i> <i>51</i>
<i>BT</i>	<i>BT</i>	<i>BT</i>	<i>BT</i>

Species	<i>N. Pine</i>	<i>N. Pine</i>	<i>N. Pine</i>	<i>N. Pine</i>
Diameter	<i>11"</i>	<i>14"</i>	<i>16"</i>	<i>10"</i>
Bearing	<i>S24°E</i>	<i>N56°E</i>	<i>N49°W</i>	<i>S52°W</i>
Distance	<i>15.6 Ls.</i>	<i>22.6 Ls.</i>	<i>35 Ls.</i>	<i>10.8 Ls.</i>

Do you believe this to be a genuine Land Office Corner? *Yes*
 If not, why? _____

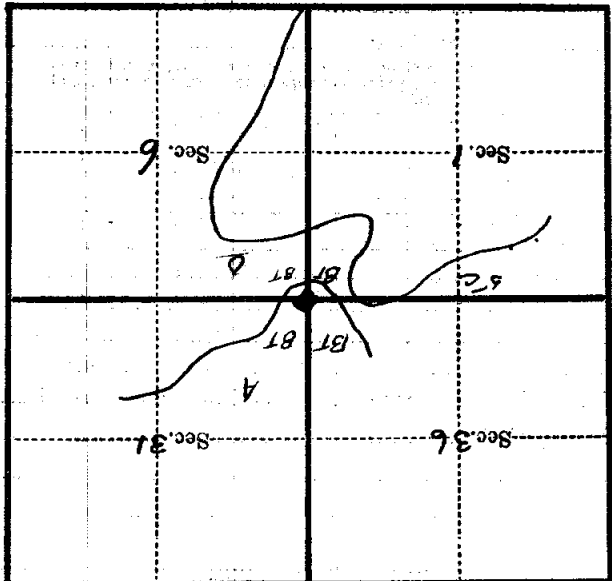
Wiley F. Fuller
 (Signature)

9-20-34
 (Date)

Teah Foreman
 (Title)

Corner again.
 Corner is located exactly at chains
 and 37 links East of location post
 on highway I.H. No. 6 - Abilene line
 can easily be followed to its
 location from the road.

Metal Location Poster is on a Norway Pine
 tree 8... inches diameter, on the South
 side of
 from which this Corner bears
 55 ⁴/₁₀ ⁴/₁₀ chains distant.
 Give any further facts which will aid in finding this



(Make sketch of topography near Corner)