

U. S. Department of Agriculture
FOREST SERVICE

117

NATIONAL FOREST

CORNERS OF THE PUBLIC SURVEY

T. 187 R. 26 Mer.

14 Corner common to Sections

26, and 27

Corner consists of a 3x3 post in place

State condition FRIT

Dimensions above ground 24 inches

Sketch grooves, letters, figures, or notches, on proper face or edge.

CARDINAL POSITION

DIAGONAL POSITION

--	--	--	--

N W S E

--	--	--	--

NW SW SE NE

Mound of _____ is located _____

Pits are located _____

Sketch markings of Bearing Trees (or Rocks) in proper box and fill blanks below, giving bearings from Corner to Trees and Distances in Links.

<u>BT</u>	<u>BT</u>		

Species tan tan

Diameter 4" 4"

Bearing S 29 W N 67 E

Distance 22.66 35.66

Do you believe this to be a genuine Land Office Corner?

If not, why? could not find any BTs approx cor

8-19-58

(Date)

(Signature)

(Title)

U.S. DEPARTMENT OF AGRICULTURE

FOREST SERVICE

SECTIONAL POSITION

CORNERS OF THE PUBLIC SURVEY

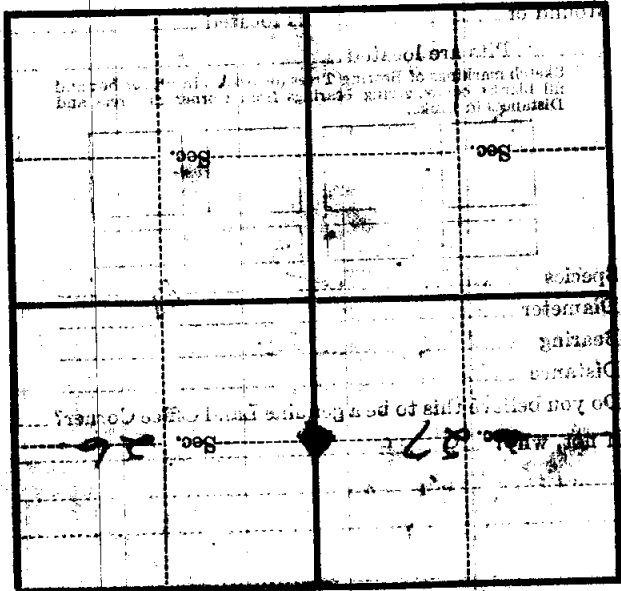
Corner again. (Corner corner) in place

Give any further facts which will aid in finding this

from which this Corner bears

side of tree inches diameter, on the Metal Location Poster is on a

Check who
R. L. S. 217



(Make sketch of topography near Corner)

T. 142 R. 57 Mer.