

U. S. Department of Agriculture  
FOREST SERVICE

V13

NATIONAL FOREST

CORNERS OF THE PUBLIC SURVEY

T. 187 R. 26 Mer.

*Section* Corner common to Sections

27, 28, 33, and 34

Corner consists of a *54 post* (not) in place

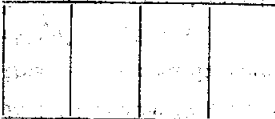
State condition *good*

Dimensions above ground *25* inches

Sketch grooves, letters, figures, or notches, on proper face or edge.

CARDINAL POSITION

DIAGONAL POSITION



N W S E

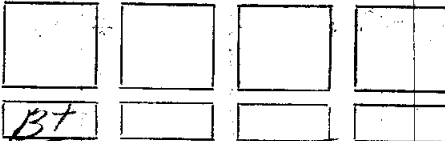


NW SW SE NE

Mound of \_\_\_\_\_ is located \_\_\_\_\_

Pits are located \_\_\_\_\_

Sketch markings of Bearing Trees (or Rocks) in proper box and fill blanks below, giving bearings from Corner to Trees and Distances in Links.



Species *Tam. Oak - Tam. + Tam. +*

Diameter *5" 3" 5" 3"*

Bearing *N 68 E N 38 W S 24 E S 65 W*

Distance *100 lks 66 lks 20 lks 24 lks*

Do you believe this to be a genuine Land Office Corner? *No*

If not, why? *No B.T.S*

*8-25-08*  
(Date)

(Signature)

(Title)

Section 33

SECTION 33

CORNER OF THE PUBLIC SURVEY

Corner again. Jag on back on E side of Road 275 to back

Give any further facts which will aid in finding this

chains distant.

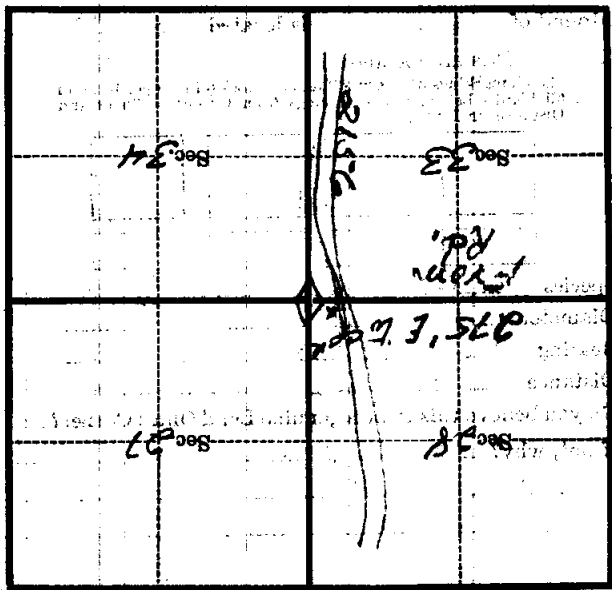
from which this Corner bears

side of ~~the~~

tree 4 inches diameter, on the

Metal Location Poster is on a

tan



(Make sketch of topography near Corner)

T 147 R 26 Mer.