

U. S. Department of Agriculture  
 FOREST SERVICE
 X13

NATIONAL FOREST

## CORNERS OF THE PUBLIC SURVEY

T. 147 R. 26 Mer.

Corner common to Sections

, 33, and 34Corner consists of a nothing (not) in place  
State condition

Dimensions above ground \_\_\_\_\_ inches

Sketch grooves, letters, figures, or notches, on proper face or edge.

CARDINAL POSITION

DIAGONAL POSITION

--	--	--	--

N W S E

--	--	--	--

NW SW SE NE

Mound of \_\_\_\_\_ is located \_\_\_\_\_

Pits are located \_\_\_\_\_

Sketch markings of Bearing Trees (or Rocks) in proper box and  
fill blanks below, giving bearings from Corner to Trees and  
Distances in Links.

--

--

--

--

13 ft13 ftSpecies tan tan stubDiameter 1 1/2 stub 4"Bearing S56E N59WDistance 28 lbs 22 lbsDo you believe this to be a genuine Land Office Corner? NoIf not, why? No B.T.SNo cor

(Signature)

(Date)

(Title)

Department of Agriculture

NATIONAL FOREST

CORNER OF THE PUBLIC SQUARE

There are 2 metal  
posts one on the E &  
one on the W side of trail

Corner again.

Give any further facts which will aid in finding this

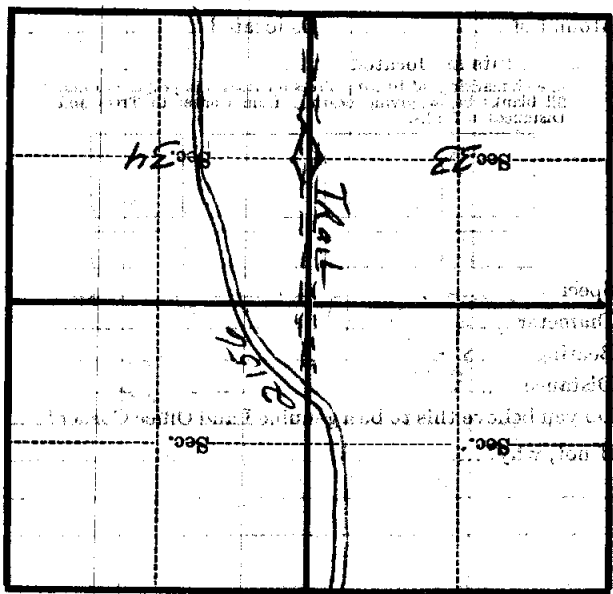
chain distant.

From which this Corner bears

side of

tree inches diameter, on the

Metal Location Poster is on a



(Make sketch of topography near Corner)

T. 147 R. 32 Mer. 5