

Form 874-9—Revised May, 1918
U. S. Department of Agriculture
FOREST SERVICE

13-5

NATIONAL FOREST

CORNERS OF THE PUBLIC SURVEY

T. 147 R. 26 5th Mer.

Sec. Corner common to Sections

19, 20, 29, and 30

Corner consists of a Elm (not) in place

State condition 30"

Dimensions above ground inches

Sketch grooves, letters, figures, or notches, on proper face or edge.

CARDINAL POSITION

DIAGONAL POSITION

--	--	--	--

N W S E

Marked			
--------	--	--	--

NW SW SE NE

Mound of is located

Pits are located

Sketch markings of Bearing Trees (or Rocks) in proper box and fill blanks below, giving bearings from Corner to Trees and Distances in Links.

S- 30

--

--

--

B.T.

--

--

--

Species N-PINE SNAG

Diameter 24"

Bearing S-86°W

Distance 2.10

Do you believe this to be a genuine Land Office Corner? Yes

If not, why?

Balke

(Signature)

Leader

(Title)

1937

(Date)

17 SUMMER

ON Wet Bog, CANNOT REACH

Corner again.

Give any further facts which will aid in finding this

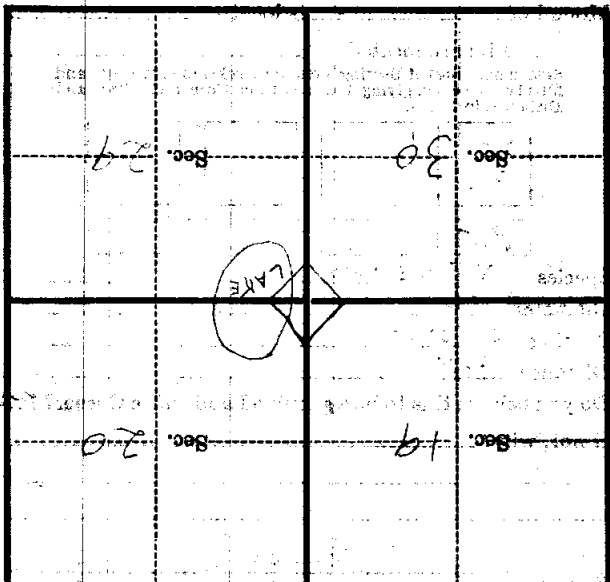
chain distant.

from which this Corner bears

side of

tree inches diameter, on the

Metal Location Poster is on a



(Make sketch of topography near Corner)

T. H. T. R 26 Mer.

U. S. Department of Agriculture
FOREST SERVICE

P.S.

Chippewa NATIONAL FOREST

CORNERS OF THE PUBLIC SURVEY

T. 147 R. 26 52 Mer.

S.E.C. Corner common to Sections
19, 20, 29, and 30

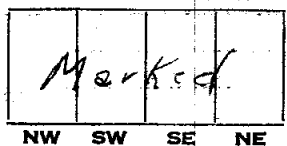
Corner consists of a elm (not) in place
State condition New

Dimensions above ground 30" inches

Sketch grooves, letters, figures, or notches, on proper face or edge.

CARDINAL POSITION

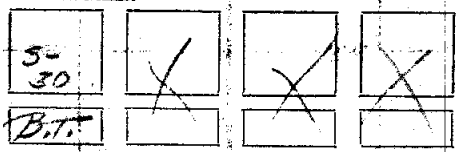
DIAGONAL POSITION



Mound of _____ is located _____

Pits are located _____

Sketch markings of Bearing Trees (or Rocks) in proper box and fill blanks below, giving bearings from Corner to Trees and Distances in Links.



Species N. PINE SNAG

Diameter 24"

Bearing S. 86° W

Distance 8.10

Do you believe this to be a genuine Land Office Corner? Yes

If not, why? _____

Balke
(Signature)

Leader
(Title)

(Date)

719977

Corner in low wet floating
bog land - impossible to
reach in summer - on
other side of
stream

Corner again:

Give any further facts which will aid in finding this
chain distant.
from which this Corner bears
side of
tree inches diameter, on the
Metal Location Poster is on a



(Make sketch of topography near Corner)