

U. S. Department of Agriculture
FOREST SERVICE

81

Chippewa NATIONAL FOREST

CORNERS OF THE PUBLIC SURVEY

T. 146 R. 27-26 5th Mer.

Section Corner common to Sections
19, 30, 24, and 25

Corner consists of a 2" pipe brass cap in place
State condition New

Dimensions above ground 18 inches

Sketch grooves, letters, figures, or notches, on proper face or edge.

CARDINAL POSITION

DIAGONAL POSITION

--	--	--	--

N W S E

--	--	--	--

NW SW SE NE

Mound of _____ is located _____

Pits are located _____

Sketch markings of Bearing Trees (or Rocks) in proper box and fill blanks below, giving bearings from Corner to Trees and Distances in Links.

T 146
R 27
S 24
BY G

T 146
R 27
S 24

T 146
R 26
S 25

T 146
R 26
S 19
New

B.T.

BT

B.T

BT

Species R. Pine R. Oak W. Oak R. Oak

Diameter 24" 9" 8" 8"

Bearing N 90° W N 21° W S 34° W N 78° E

Distance 29.0' 10.5' 20.3' 27.7'

Do you believe this to be a genuine Land Office Corner?

If not, why? _____

3-20-58

(Date)

(Signature)

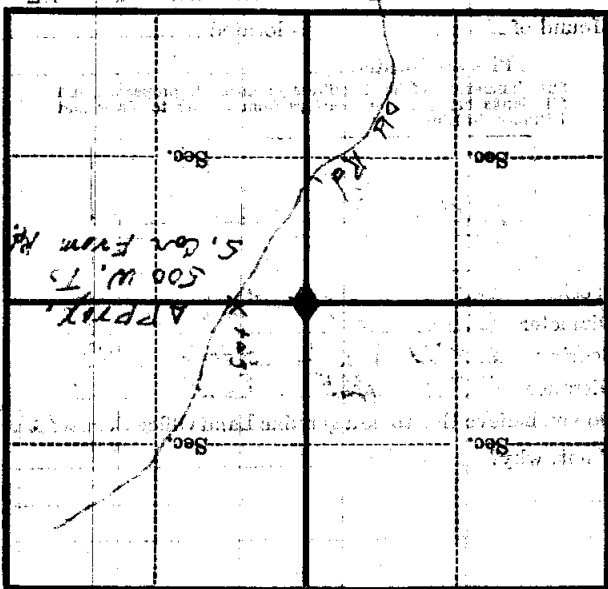
(Title)

Corner again.

Give any further facts which will aid in finding this corner distant.

from which this Corner bears 521.5' side of 12.5' tree 9 inches diameter, on the S E

Metal Location Poster is on a R. OAK



(Make sketch of topography near Corner)

U. S. Department of Agriculture

FOREST SERVICE

R. 1

Chippewa NATIONAL FOREST

CORNERS OF THE PUBLIC SURVEY

T. 147N R. 26W 5th Mer.

Sec Corner common to Sections

24, 25, 19, and 30

Corner consists of a Brass Cap (not) in place

State condition new

Dimensions above ground inches

Sketch grooves, letters, figures, or notches, on proper face or edge.

CARDINAL POSITION

DIAGONAL POSITION

524	519
525	530

--	--	--	--

N W S E

NW SW SE NE

Mound of is located

Pits are located

Sketch markings of Bearing Trees (or Rocks) in proper box and fill blanks below, giving bearings from Corner to Trees and Distances in Links.

T147 B26 519	T147 B26 530	T147 B27 525	T147 B27 524
BT	BT	BT	BT

Species ~~Tan~~ Cedar ~~Tan~~ Cedar

Diameter 4 5 5 4

Bearing N63 1/4 W S54 1/4 E S11 W N75 W

Distance 12 33 21 1 1/2

Do you believe this to be a genuine Land Office Corner? yes

If not, why?

(Signature)

(Date)

(Title)

Metal Location Poster is on a tree _____ inches diameter, on the _____ side of _____ from which this Corner bears _____ chains distant.

Give any further facts which will aid in finding this Corner again.

<p>Sec. 30</p>	<p>Sec. 35</p>
<p>Sec. 19</p> <p>B26</p>	<p>Sec. 24</p> <p>B27</p>

(Make sketch of topography near Corner)

T. 142N R. 26W 5th Mer.

U. S. Department of Agriculture
FOREST SERVICE

21

Chippewa NATIONAL FOREST

CORNERS OF THE PUBLIC SURVEY

T. 147 R. 26 5th Mer.

1/4 Corner common to Sections
19, and 30.

Corner consists of a Cedar Post (~~rock~~) in place

State condition New

Dimensions above ground 36 inches

Sketch grooves, letters, figures, or notches, on proper face or edge.

CARDINAL POSITION

DIAGONAL POSITION

--	--	--	--

N W S E

--	--	--	--

NW SW SE NE

Mound of _____ is located _____

Pits are located _____

Sketch markings of Bearing Trees (or Rocks) in proper box and fill blanks below, giving bearings from Corner to Trees and Distances in Links.

	S- 19	S- 30	
B.T.	B.T.		

Species	<u>J Pine</u>	<u>Cedar</u>	<u>Cedar</u>
Diameter	<u>20"</u>	<u>5"</u>	<u>5"</u>
Bearing	<u>N. 50° W</u>	<u>N. 20° W</u>	<u>S. 49° W</u>
Distance	<u>.86</u>	<u>.06</u>	<u>.16</u>

Do you believe this to be a genuine Land Office Corner? Yes

If not, why? _____

B. alke
(Signature) Leader

1936
(Date)

(Title)

Corner again.

Give any further facts which will aid in finding this

chains distant.

from which this Corner bears

side of

tree inches diameter, on the

Metal Location Poster is on a

	Sec.		Sec.
	Sec.		Sec.

(Make sketch of topography near Corner)

T. 157 R. 24 Mer.

U. S. Department of Agriculture
FOREST SERVICE

R.Y.

~~Chippewa~~ NATIONAL FOREST
CORNERS OF THE PUBLIC SURVEY

T. 147N R. 26W 5th Mer.

500 Corner common to Sections

24, 25, 19, and 30

Corner consists of a Brown Cap (not) in place

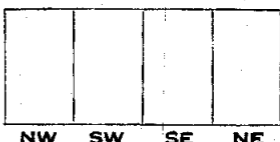
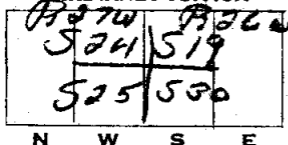
State condition new

Dimensions above ground _____ inches

Sketch grooves, letters, figures, or notches, on proper face or edge.

CARDINAL POSITION

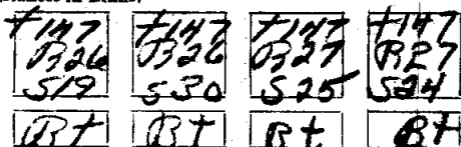
DIAGONAL POSITION



Mound of _____ is located _____

Pits are located _____

Sketch markings of Bearing Trees (or Rocks) in proper box and fill blanks below, giving bearings from Corner to Trees and Distances in Links.



Species 7099 Cedar 7099 Cedar

Diameter 4 5 5 4

Bearing N 63 1/2 W S 54 1/2 E S 11 1/2 W N 75 1/2 W

Distance 12 33 21 1 1/2

Do you believe this to be a genuine Land Office Corner? yes

If not, why? _____

(Signature)

(Date)

(Title)

Metal Location Poster is on a tree _____ inches diameter, on the side of _____ from which this Corner bears _____ chains distant.
 Give any further facts which will aid in finding this Corner again.

<p>Sec. 30</p>	<p>Sec. 25</p>
<p>Sec. 19</p> <p>826</p>	<p>Sec. 24</p> <p>827</p>

(Make sketch of topography near Corner)

T. 142N R. 26W 57A Mer.