

U. S. Department of Agriculture
FOREST SERVICE

11

Chippewa NATIONAL FOREST

CORNERS OF THE PUBLIC SURVEY

T. 147 R. 26 5th Mer.

^{1/4} Corner common to Sections
25, and 30

Corner consists of a IRON PIPE (not) in place

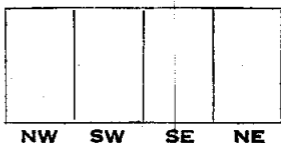
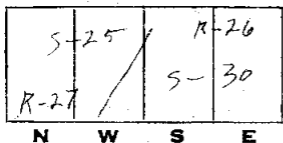
State condition NEW

Dimensions above ground 2' - 27" inches

Sketch grooves, letters, figures, or notches, on proper face or edge.

CARDINAL POSITION

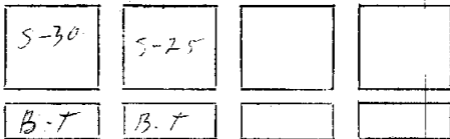
DIAGONAL POSITION



Mound of _____ is located _____

Pits are located _____

Sketch markings of Bearing Trees (or Rocks) in proper box and fill blanks below, giving bearings from Corner to Trees and Distances in Links.



Species W. OAK W. OAK

Diameter 7" 6"

Bearing S. 52° E S. 57° W

Distance .55 1.13

Do you believe this to be a genuine Land Office Corner? yes

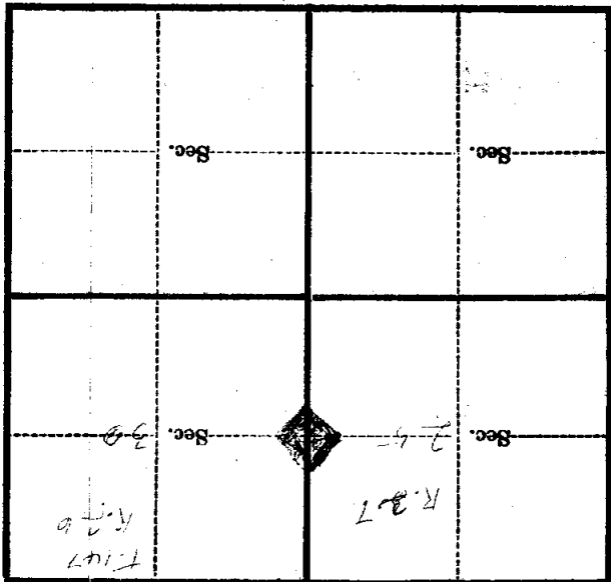
If not, why? _____

Baker
(Signature) Leader
(Title)

1937
(Date)

99

Metal Location Poster is on a tree _____ inches diameter, on the _____ side of _____ from which this Corner bears _____ chains distant.
 Give any further facts which will aid in finding this Corner again.



(Make sketch of topography near Corner)

T. 147 R. 26 Mer.

U. S. Department of Agriculture
FOREST SERVICE

7/1

Chippewa NATIONAL FOREST
CORNERS OF THE PUBLIC SURVEY

T. 147N R. 26W 5th Mer.

1/4 Corner common to Sections
25, and 30

Corner consists of a iron pipe (set) in place

State condition new

Dimensions above ground 2" - 27' inches

Sketch grooves, letters, figures, or notches, on proper face or edge.

CARDINAL POSITION

DIAGONAL POSITION

B27	B26		
S25	S30		
N	W	S	E

NW	SW	SE	NE

Mound of _____ is located _____

Pits are located _____

Sketch markings of Bearing Trees (or Rocks) in proper box and fill blanks below, giving bearings from Corner to Trees and Distances in Links.

530	525		
B7	B7		

Species W.O.A.K W.O.A.K

Diameter 2" 6"

Bearing S52°E S57°W

Distance 53 1.13

Do you believe this to be a genuine Land Office Corner? yes
If not, why? _____

(Signature)

(Date)

(Title)

94

Metal Location Poster is on a tree _____ inches diameter, on the _____ side of _____ from which this Corner bears _____ chains distant.

Give any further facts which will aid in finding this Corner again.

<p>Sec. _____</p>	<p>Sec. _____</p>	<p>Sec. _____</p>	<p>Sec. _____</p>
<p>Sec. <i>30</i></p> <p><i>320</i></p>	<p>Sec. <i>35</i></p> <p><i>327</i></p> <p><i>+ 117N</i></p>		

(Make sketch of topography near Corner)

T. 117N R. 26W
6-74
 Mer.

Form 674-0 Revised May, 1913
 U. S. Department of Agriculture
 FOREST SERVICE

NATIONAL FOREST
 CORNERS OF THE PUBLIC SURVEY

T. _____ R. 24 Mer. _____

Corner common to Sections _____, _____, and 30

Corner consists of a Iron Pipe (not) in place
 State condition _____

Dimensions above ground 2 1/2 inches
 Sketch grooves, letters, figures, or notches, on proper face or edge.
 CARDINAL POSITION DIAGONAL POSITION

	<u>24</u>	<u>R 26</u>
<u>525</u>	<u>30</u>	
<u>1938</u>		
N	W	E

NW	SW	SE	NE

Mound of _____ is located _____

Pits are located _____

Sketch markings of Bearing Trees (or Rocks) in proper box and fill blanks below, giving bearings from Corner to Trees and Distances in Links.

<u>530</u>	<u>525</u>		
<u>BT</u>	<u>BT</u>		

Species W. Oak W. Oak

Diameter 7 1/2 11 1/2

Bearing S 51 1/2 E S 51 W

Distance 55 113

Do you believe this to be a genuine Land Office Corner? Yes

If not, why? _____

(Signature) _____

(Date) _____

(Title) _____

STATIONARY TARGET

CORNER OF THE PUBLIC SQUARE

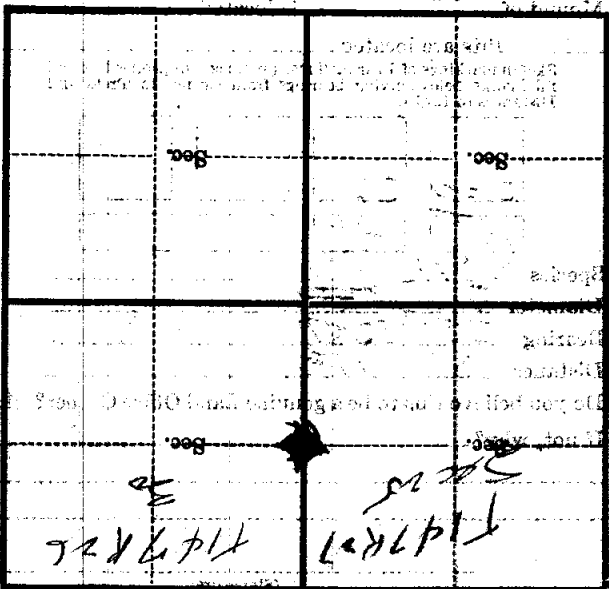
Corner of ...

Give any further facts which will aid in finding this ...

from which this Corner bears ...

tree inches diameter, on the ...

Metal Location Poster is on a ...



(Make sketch of topography near Corner)