

FOREST SERVICE - Revised May, 1925  
 U. S. Department of Agriculture  
 FOREST SERVICE

**N-05**

Chippewa NATIONAL FOREST  
 CORNERS OF THE PUBLIC SURVEY

T. 946 R. 31 5th Mer.

Mc Corner common to Sections  
19, and 20

Corner consists of a Sto (not) in place  
 State condition \_\_\_\_\_

Dimensions above ground \_\_\_\_\_  
 Sketch grooves, letters, figures, or notches, on proper face or edge.  
 CARDINAL POSITION DIAGONAL POSITION

N	W	S	E

NW	SW	SE	NE

Mound of \_\_\_\_\_ is located \_\_\_\_\_

Pits are located \_\_\_\_\_

Sketch markings of Bearing Trees (or Rocks) in proper box and  
 fill blanks below, giving bearings from Corner to Trees and  
 Distances in Links.

T106  
R-11  
S-19  
Mc

T106  
R-11  
S-20  
Mc

BT

BT

Species QRB ORR

Diameter 11" 9"

Bearing N42W S69E

Distance 18ch 145ch

Do you believe this to be a genuine Land Office Corner? Yes

If not, why? \_\_\_\_\_

Smalley

U. S. DEPARTMENT OF AGRICULTURE FOREST SERVICE

E. (Date) K. N-05  
N-05

U. S. Department of Agriculture

FOREST SERVICE

NATIONAL FOREST

CORNERS OF THE PUBLIC SURVEY

T. R. M.

Correct corners to sections

and

Correct corners of a (707) in place

Section

Directions and distances from which all are to be

measured from the corner of the section

Diagonal position

from the corner of the section

to the

corner of the section, on the

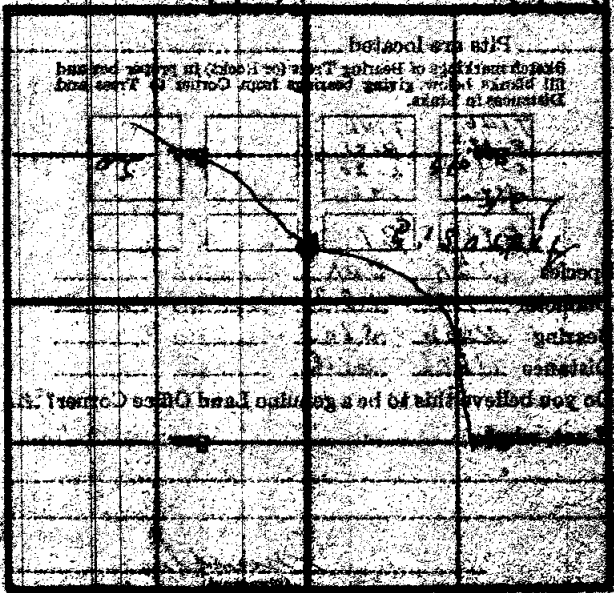
North West Corner of a

NE

SE

SW

NW



U. S. Department of Agriculture  
FOREST SERVICE

N-0-3 18

Chippewa NATIONAL FOREST

CORNERS OF THE PUBLIC SURVEY

T. 146 R. 31 5th Mer.

M.C.

Corner common to Sections

19, and 20

Corner consists of a M.L. (not) in place

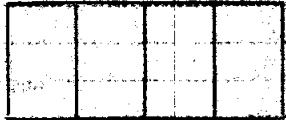
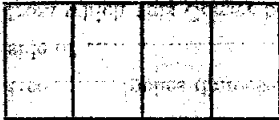
State condition

Dimensions above ground

Sketch grooves, letters, figures, or notches, on proper face or edge.

CARDINAL POSITION

DIAGONAL POSITION



N W S E

NW SW SE NE

Mound of \_\_\_\_\_ is located

Pits are located

Sketch markings of Bearing Trees (or Rocks) in proper box and fill blanks below, giving bearings from Corner to Trees and Distances in Links.

T 146  
R 31  
S-19

T 146  
R 31  
S-20



BT

BT



Species Oak Oak

Diameter 10 8

Bearing N 44 W S 60 E

Distance 180 150

Do you believe this to be a genuine Land Office Corner? Yes

If not, why?

[Signature]

N-0-3

N-0-5

