

U. S. Department of Agriculture
FOREST SERVICE

F-24
F-24

NATIONAL FOREST

CORNERS OF THE PUBLIC SURVEY

T. 146 R. 31 Mer.

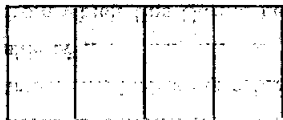
NE 4.6 Corner common to Sections
R, and

Corner consists of a N 20 Cap (not) in place
State condition Good

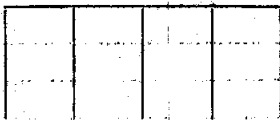
Dimensions above ground 6" inches
Sketch grooves, letters, figures, or notches, on proper face or edge.

CARDINAL POSITION

DIAGONAL POSITION



N W S E



NW SW SE NE

Mound of _____ is located _____

Pits are located _____

Sketch markings of Bearing Trees (or Rocks) in proper box and fill blanks below, giving bearings from Corner to Trees and Distances in Links.

NE 1/4
S-12

NE 1/4
S-12

BT

BT

Species R. Oak W. Oak

Diameter 8" 3"

Bearing S 2 W N 45 E

Distance 58 lns 39 lns

Do you believe this to be a genuine Land Office Corner? Yes

If not, why? _____

(Signature) _____
4/15/35 (Date)
8-7504

F-24

100

Section 21

CORNERS OF THE PUBLIC SURVEY

Order consists of a ...

Corner again. Give any further facts which will aid in finding this

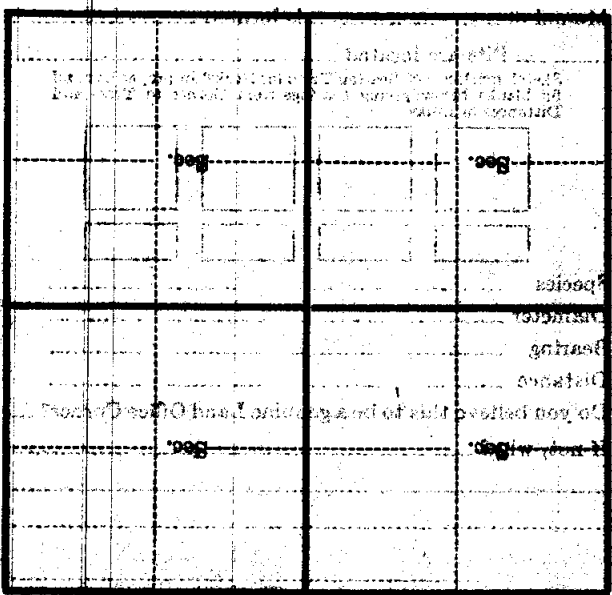
chain distant.

from which this Corner bears

side of

inches diameter, on the

Metal Location Poster is on a



(State stretch of topography near Corner)

100

100

100