

U. S. Department of Agriculture
FOREST SERVICE

G-24

NATIONAL FOREST

CORNERS OF THE PUBLIC SURVEY

T. 146 R. 31 Mer.

CE 1/4 Corner common to Sections

12, and

Corner consists of a 1/2" x 20 (not) in place

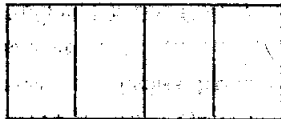
State condition Good

Dimensions above ground 6" inches

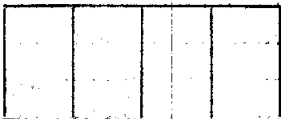
Sketch grooves, letters, figures, or notches, on proper face or edge.

CARDINAL POSITION

DIAGONAL POSITION



N W S E



NW SW SE NE

Mound of _____ is located _____

Pits are located _____

Sketch markings of Bearing Trees (or Rocks) in proper box and fill blanks below, giving bearings from Corner to Trees and Distances in Links.

CE 1/4 S-12	CE 1/4 S-12		
BT	BT		

Species 1 Oak Birch

Diameter 4 6"

Bearing E 5" N N 5" S

Distance 11 ch 31 ch

Do you believe this to be a genuine Land Office Corner? Yes

If not, why? _____

4/15/55
(Date)

(Signature)

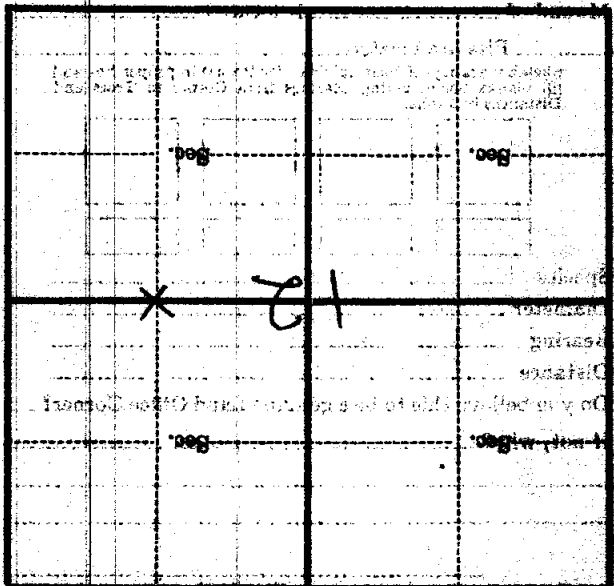
G-24

6-24

CORNERS OF THE PUBLIC SURVEY

Corner again: *Corner of ... E.W. D. N.P.C.*

Give any further facts which will aid in finding this corner again. *chain distant*
from which this corner bears *N 25 E*
side of *...*
tree *12* inches diameter, on the *N. 25 E*
Metal Location Poster is on a *N 25 E*



(Make sketch of topography near corner)

*Copied
Pasted
76
G24*

U. S. Department of Agriculture
FOREST SERVICE

Chippewa NATIONAL FOREST

CORNERS OF THE PUBLIC SURVEY

T. *146* R. *3/* Mer. *5th*

E. or *8 1/4* Corner common to Sections
and 12

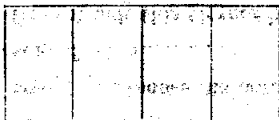
Corner consists of a *M.L.C.* (not) in place
State condition *Good*

Dimensions above ground *5* inches

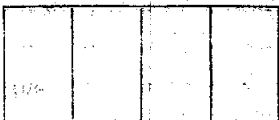
Sketch grooves, letters, figures, or notches, on proper face or edge.

CARDINAL POSITION

DIAGONAL POSITION



N W S E



NW SW SE NE

Mound of is located

Pits are located

Sketch markings of Bearing Trees (or Rocks) in proper box and fill blanks below, giving bearings from Corner to Trees and Distances in Links.

0 E 1/4
S-12



B.T.



Species *B.L.C.B*

Diameter *7"*

Bearing *W*

Distance *20'*

Do you believe this to be a genuine Land Office Corner? *Y*

If not, why?

(Signature)

7/26/33
(Date)

(Title)

G-24

624

Give any further facts which will aid in finding the

status of the

from which this corner bears

to the corner diameter, on the

Local Location Point is on a

	Sec.		Sec.
		12	Sec.
	Sec.		

(Place sketch of topography near Corner)

Mer.

R. 31

1276

U. S. Department of Agriculture

FOREST SERVICE

RANGER'S

FILE COPY

CORNERS OF THE PUBLIC SURVEY

T. 146 N. R. 22 E. S. 34
20 - 144 Corner common to Sections

and
Corner consists of
Best condition

Dimensions above ground
Cards placed in proper location, on proper face or edge
CARDINAL POSITION DIAGONAL POSITION

146 N	22 E	34			
146 N	22 E	34			
146 N	22 E	34			
146 N	22 E	34			
N	W	E	NE	SW	SE

Wood of _____ is located

Piles are located _____

Sketch markings of bearing trees (or rocks) in proper box and
give bearing from corner to tree and
distance in links.

NE			
SE			

Species _____

Diameter _____

Bearing _____

Distance _____

Do you believe this to be a genuine Land Office Corner?

If not, why? _____

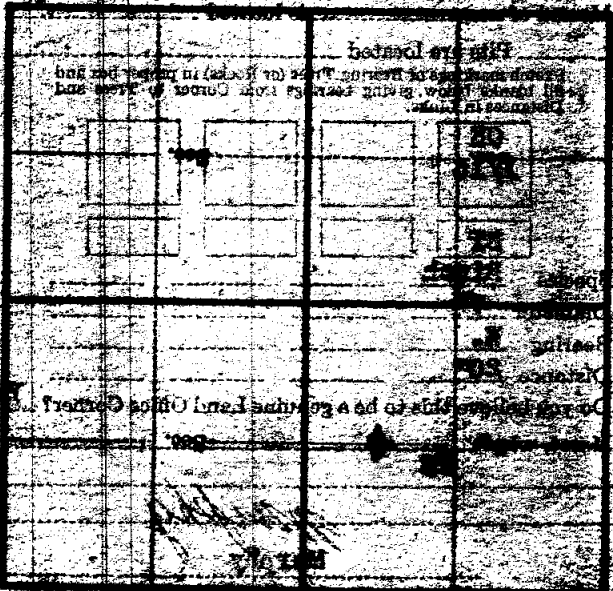
[Handwritten Signature]

WARRANT

CORNERS OF THE PUBLIC SURVEY

T. 12 S. R. 21 E. S. 320
County of ... State of ...
Contains of a ...
Distant ...

... on the ...
...
...



This is located ...
...
...

...
...

...