

U. S. Department of Agriculture
FOREST SERVICE

**RANGER'S
FILE COPY**

CORNERS OF THE PUBLIC SURVEY

T. 26 N. R. 31 E. S. 30 Mer.
 Corner common to Sections

14, 15, and 16

Corner consists of a 500 rod in place

State condition

Dimensions 100 feet square

Sketch grooves, ridges, figures, or notches, on proper face or edge

CARDINAL POSITION

DIAGONAL POSITION

N	W	E	S	NW	SW	SE	NE

Mound of stone is located

Pits are located

Sketch markings of Bearing Trees (or Rocks) in proper box and all blanks below, giving bearings from Corner to Trees and Distances in Links.

Species White Pine

Diameter 12

Bearing N 30 E

Distance 100

Do you believe this to be a genuine Land Office Corner?

If not, why?

[Handwritten signature]

U. S. Department of Agriculture

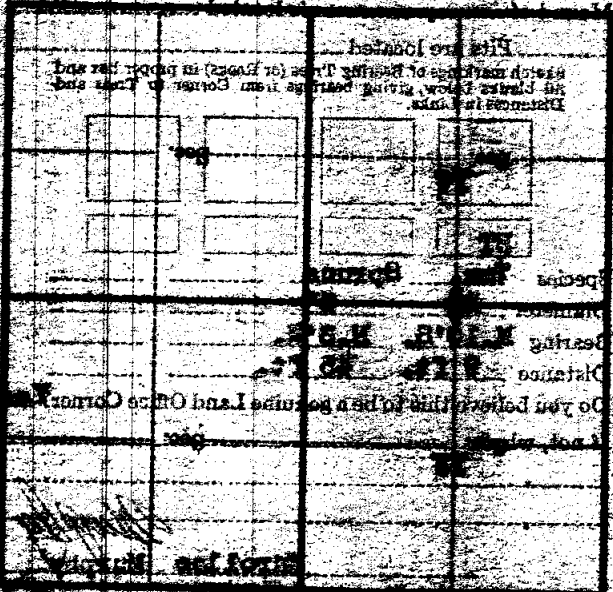
FOREST SERVICE
NATIONAL FOREST

CORNERS OF THE PUBLIC SURVEY

T. 26 S. R. 21 E. S. 12
Corner common to sections 12 and 13
Corner of a ... in place

Cardinal Position
Diagonal Position
Distance from ...

NE	SE	SW	NW



J-19
519

U. S. Department of Agriculture
FOREST SERVICE

Chippewa NATIONAL FOREST

CORNERS OF THE PUBLIC SURVEY

T. 146 N. R. 31 W. 5th Mer.

1/4 Corner common to Sections

11, and 14

Corner consists of a GLO (rock) in place

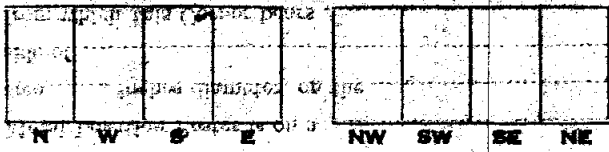
State condition

Dimensions above ground 42 inches

Sketch grooves, letters, figures, or notches, on proper face or edge.

CARDINAL POSITION

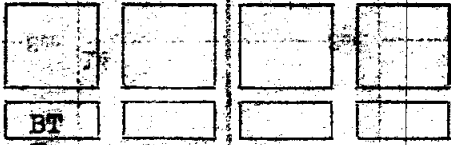
DIAGONAL POSITION



Mound of _____ is located

Pits are located

Sketch markings of Bearing Trees (or Rocks) in proper box and fill blanks below, giving bearings from Corner to Trees and Distances in Links.



Species Tam. Spruce

Diameter 8" 8"

Bearing N. 10° S. N. 3° W.

Distance 9 ft. 45 ft.

Do you believe this to be a genuine Land Office Corner? Yes

If not, why?

Murphy
Enrollee Murphy

5/6/35

J-19

11-1

U.S. DEPARTMENT OF AGRICULTURE

FOREST SERVICE

NATIONAL FOREST

CORNERS OF THE PUBLIC SURVEY

T. 14 S. R. 31 W. S. 14

Other common sections

and 1/2

Other corners of a

Section

Diagonal position

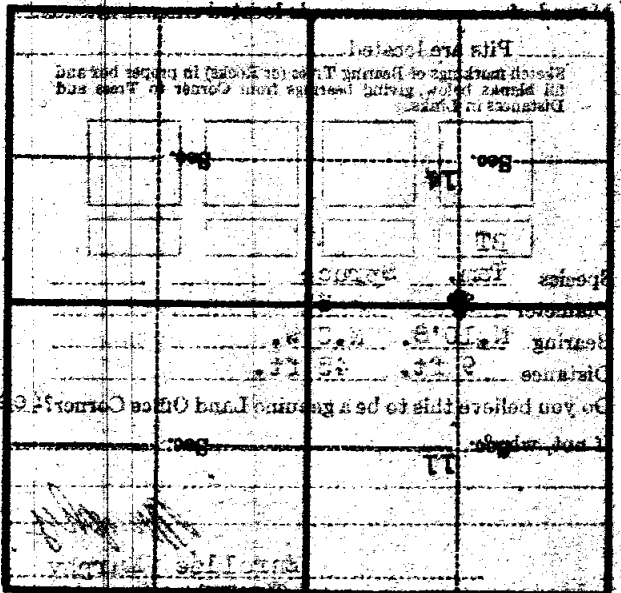
from which this corner bears

side of

tree inches diameter, on the

North location corner is on a

NW SW SE NE



Do you believe this to be a genuine land office corner?

T. 14 S. R. 31 W. S. 14

11-1