

U. S. Department of Agriculture
FOREST SERVICE

L-14

NATIONAL FOREST

CORNERS OF THE PUBLIC SURVEY

T. 14 R. 31 Mer.

C 44 Corner common to Sections

15, and
Corner consists of a pipe + brass cap in place

State condition Good

Dimensions above ground 1 1/2" inches

Sketch grooves, letters, figures, or notches, on proper face or edge.

CARDINAL POSITION

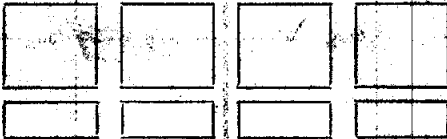
DIAGONAL POSITION



Mound of _____ is located _____

Pits are located _____

Sketch markings of Bearing Trees (or Rocks) in proper box and fill blanks below, giving bearings from Corner to Trees and Distances in Links.



Species Aspen Yucca

Diameter 10" 7"

Bearing S. 11° 30' E S. 40° SW

Distance 2 1/2 4

Do you believe this to be a genuine Land Office Corner?

If not, why? Yes

Bob Gill

3/26/35
(Date)

(Signature)
(Title)
L-14

U.S. DEPARTMENT OF THE INTERIOR

1-14

CORNER OF THE PUBLIC SURVEY

Corner of a...
Corner of a...
Corner of a...
Corner of a...

Give any further facts which will aid in finding this

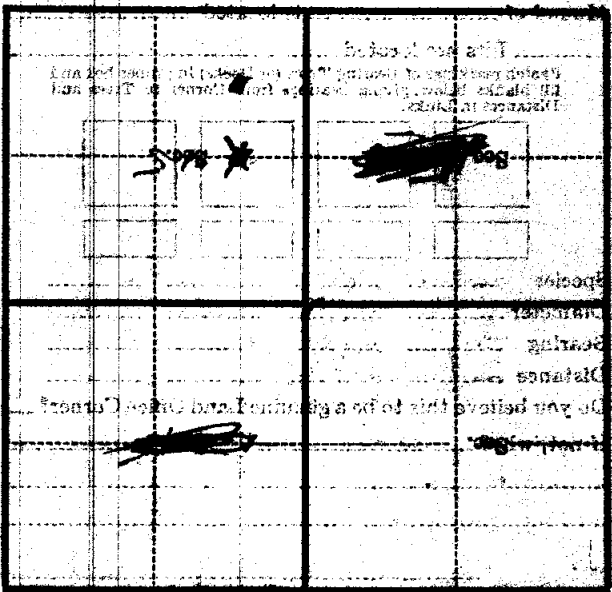
claims district

from which this Corner bears

side of

inches diameter, on the

Metal Location Poster is on a



(Sketch sketch of topography near Corner)

U. S. Department of Agriculture
FOREST SERVICE

P
34
L-14

Chippewa NATIONAL FOREST

CORNERS OF THE PUBLIC SURVEY

T. *1246* R. *31* *5th* Mer.

WC. or # 9 *42* Corner common to Sections

....., and *12*
Corner consists of a *Y L L* (not) in place

State condition *Good*

Dimensions above ground *12* inches

Sketch grooves, letters, figures, or notches, on proper face or edge.

CARDINAL POSITION

DIAGONAL POSITION

N W S E NW SW SE NE

Mound of is located

Pits are located

Sketch markings of Bearing Trees (or Rocks) in proper box and fill blanks below, giving bearings from Corner to Trees and Distances in Links.

Species *Aspen* *W O B*

Diameter *10"* *12"*

Bearing *S 12 E* *S 46 W*

Distance *2.16 ch* *1.9 fcl*

Do you believe this to be a genuine Land Office Corner? *Y*

If not, why?

Y. Mill

(Signature)

3/26/35

(Date)

(Tick)

L-14

