

C-9  
 C-9

NATIONAL FOREST  
 CORNERS OF THE PUBLIC SURVEY

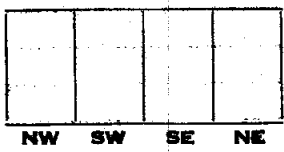
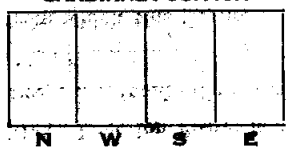
T. 146 R. 51 Mer. 5

Corner common to Sections 40  
5, 4, and \_\_\_\_\_

Corner consists of a Brass Capon in place  
 State condition \_\_\_\_\_

Dimensions above ground 5" inches

Sketch grooves, letters, figures, or notches, on proper face or edge.



Mound of \_\_\_\_\_ is located \_\_\_\_\_

Pits are located \_\_\_\_\_

Sketch markings of Bearing Trees (or Rocks) in proper box and fill blanks below, giving bearings from Corner to Trees and Distances in Links.

|  |   |  |  |
|--|---|--|--|
| <u>T. 146</u><br><u>R. 51</u><br><u>S. 5</u> | <u>146</u><br><u>R. 51</u><br><u>S. 4</u> |  |  |
| <u>BT</u>                                    | <u>BT</u>                                 |  |  |

Species N. PINE N. PINE

Diameter 12" 8"

Bearing N. 67° W S. 69° 30' E

Distance 999 chs 176 chs

Do you believe this to be a genuine Land Office Corner? \_\_\_\_\_

If not, why? Yes

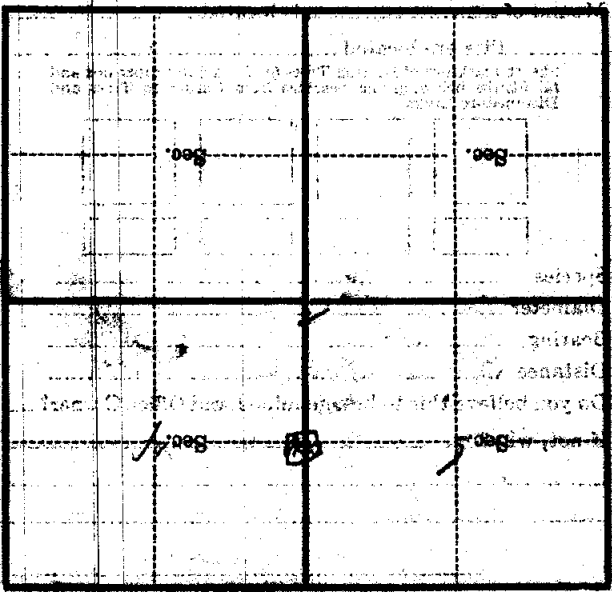
Robert Smith  
 (Signature)

3/21/35  
 (Date)

(Title) C-9

NAME OF THE BUILDING  
ADDRESS  
CITY AND STATE

Corner bears  
Give any other facts which will aid in finding this  
distance distant  
from which this Corner bears  
side of  
feet inches diameter, on the  
Metal Location Poster is on a



(Make sketch of topography near Corner)

U. S. Department of Agriculture  
FOREST SERVICE

P. 936  
C-9  
C9

*Chippewa* NATIONAL FOREST

CORNERS OF THE PUBLIC SURVEY

T. *12 1/2* R. *31* 5<sup>th</sup> Mer.

*1/4* Corner common to Sections

Corner consists of a *4* and *5*  
*4* *5* (not) in place

State condition *Good*

Dimensions above ground *5* inches

Sketch grooves, letters, figures, or notches, on proper face or edge.

CARDINAL POSITION

DIAGONAL POSITION

|   |   |   |   |
|---|---|---|---|
|   |   |   |   |
| N | W | S | E |

|    |    |    |    |
|----|----|----|----|
|    |    |    |    |
| NW | SW | SE | NE |

Mound of \_\_\_\_\_ is located \_\_\_\_\_

Pits are located \_\_\_\_\_

Sketch markings of Bearing Trees (or Rocks) in proper box and fill blanks below, giving bearings from Corner to Trees and Distances in Links.

T-*126*  
P-*31*  
S-*5*

T-*144*  
P-*31*  
S-*4*



BT

BT



Species *N.P.D. N.P.D.*

Diameter *12"* *13"*

Bearing *N 61 W* *S 69 E*

Distance *1 ch* *276 ch*

Do you believe this to be a genuine Land Office Corner? *Yes*

If not, why? \_\_\_\_\_

*John G. Hill*  
(Signature)

*3/21/36*  
(Date)

U. S. Department of Agriculture  
 FOREST SERVICE

NATIONAL FOREST

CORNERS OF THE PUBLIC SURVEY

Corner common to sections  
 1717

Corner consists of a (not in place)  
 Corner again.

Give any further facts which will aid in finding this

Corner consists of a (not in place)  
 Corner again.

From which this corner bears

side of

tree inches diameter, on the

Metal Location Poster is on a

N W S E NW SW SE NE

|                   |                   |                   |                   |
|-------------------|-------------------|-------------------|-------------------|
| <p>is located</p> | <p>is located</p> | <p>is located</p> | <p>is located</p> |
| <p>Sec. 7</p>     | <p>Sec. 8</p>     | <p>Sec. 9</p>     | <p>Sec. 10</p>    |

(Make sketch of topography at corner)