

Form 874-B—Revised May, 1918
 U. S. Department of Agriculture
 FOREST SERVICE

L-9

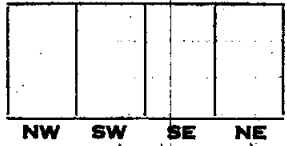
NATIONAL FOREST
 CORNERS OF THE PUBLIC SURVEY

T. 146 R. 31 Mer. 5

Corner common to Sections 16, 17, and _____

Corner consists of a Iron - cap + pipe in place
 State condition Good

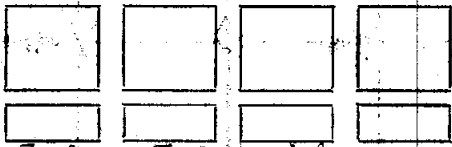
Dimensions above ground 41" Below _____ inches
 Sketch grooves, letters, figures, or notches, on proper face or edge.



Mound of air centers located of 4 roads

Pits are located _____

Sketch markings of Bearing Trees (or Rocks) in proper box and fill blanks below, giving bearings from Corner to Trees and Distances in Links.



Species J. P. N. S. J. P. N. S. J. P. N. S.

Diameter 6" 12" 5"

Bearing N 46° 20' E S 51° 11' W N. 57° 45' W

Distance 1.29 1.129 1.475

Do you believe this to be a genuine Land Office Corner? _____

If not, why? Yes

3123135
 (Date)

(Signature)

(Title)

14-9

Field Notes

1-9

CORNERS OF THE PUBLIC SURVEY

Corner consists of a *...*
Corner again.

Give any further facts which will aid in finding this

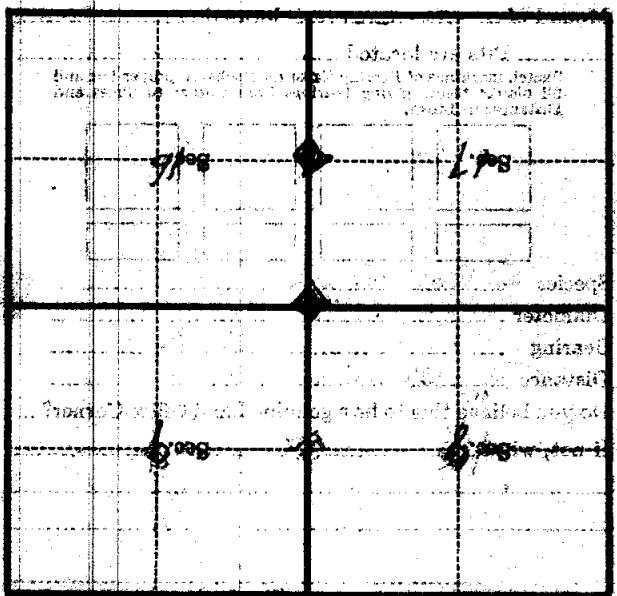
chains distant

from which this Corner bears

side of

tree inches diameter, on the

Metal Location Poster is on a



(Make sketch of topography near Corner)

1-9

U. S. Department of Agriculture
FOREST SERVICE

P
5
34
29

Chippewa NATIONAL FOREST

CORNERS OF THE PUBLIC SURVEY

T. 1246 R. 21 S. 5 Mer.

Corner common to Sections

16, and 17

Corner consists of a Stake (and) in place

State condition

Good

Dimensions above ground Indefinite inches

Sketch grooves, letters, figures, or notches, on proper face or edge.

CARDINAL POSITION

DIAGONAL POSITION

N W S E

NW SW SE NE

Mound of _____ is located _____

Pits are located _____

Sketch markings of Bearing Trees (or Rocks) in proper box and fill blanks below, giving bearings from Corner to Trees and Distances in Links.

Species J. Pine J. Pine J. Pine

Diameter 6" 1.8" 5"

Bearing N46 E S51 N N57 W

Distance 1.29 ch 1.12 ch 6.47 ch

Do you believe this to be a genuine Land Office Corner? Yes

If not, why?

Yule

(Signature)

3/23/35
(Date)

(Title)

U. S. Department of Agriculture

FOREST SERVICE

NATIONAL FOREST

CORNERS OF THE PUBLIC SURVEY

Section No. _____ Township _____ Range _____

Corner common to sections _____ and _____

Corner consists of a _____ (tree) in place.

Corner again _____ State condition _____

Give any further facts which will aid in finding this _____

Dimensions above ground _____

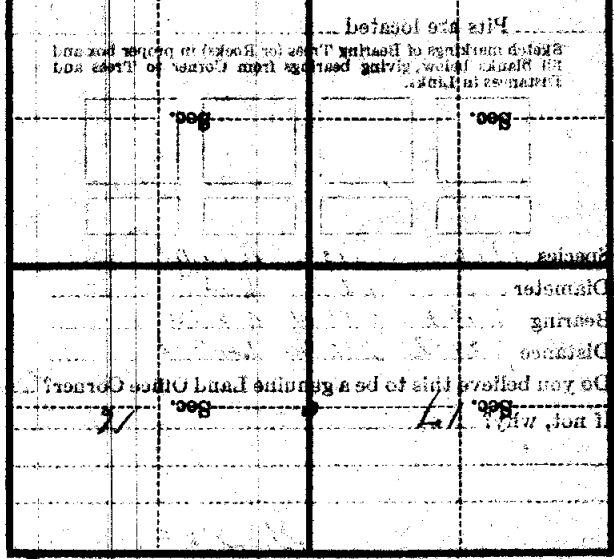
from which the corner bears _____

side of _____

tree _____ inches diameter, on the _____

Metal Location Post is on a _____

N W S E NW SW SE NE



(Make sketch of topography at corner)