

R 9110

Form 874-9—Revised May, 1918

U. S. Department of Agriculture
FOREST SERVICE

R-9-10

Chippewa NATIONAL FOREST

CORNERS OF THE PUBLIC SURVEY

T. 146N. R. 30W. 574 Mer.

Meander Corner common to Sections
21, and 28

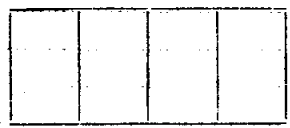
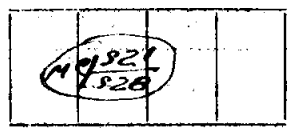
Corner consists of a Brass Piped Pipe (not) in place
State condition Good

Dimensions above ground 8 inches

Sketch grooves, letters, figures, or notches, on proper face or edge.

CARDINAL POSITION

DIAGONAL POSITION



Mound of _____ is located _____

Pits are located _____

Sketch markings of Bearing Trees (or Rocks) in proper box and fill blanks below, giving bearings from Corner to Trees and Distances in Links.

MC
S 28

MC
S. 21

BT

BT

Species N. Pine N. Pine

Diameter 22" 24"

Bearing S 96° E N 91° 30' E

Distance 36 1/2 83

Do you believe this to be a genuine Land Office Corner? Yes

If not, why? _____

J. A. Gjelhaug
(Signature)

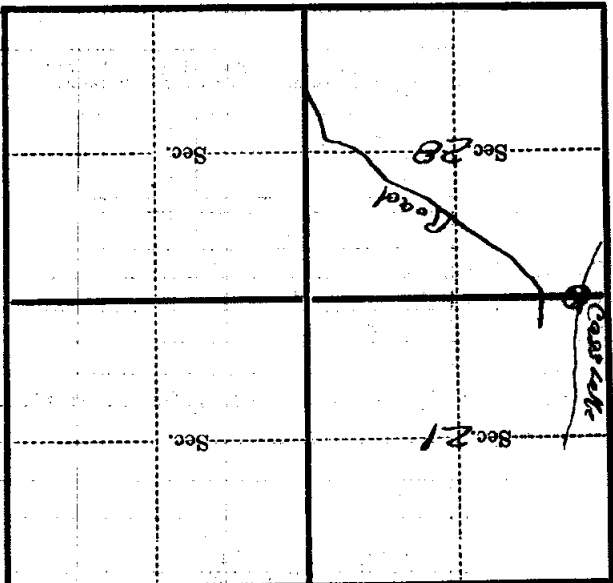
10/10/34
(Date)

Trck Eng
(Title)

R-9-10

Corner again.

Metal Location Poster is on a tree..... inches diameter, on the side of from which this Corner bears chains distant. Give any further facts which will aid in finding this



(Make sketch of topography near Corner)

R-9-10

5.75 Mer

T. 196N. R. 30W