

U. S. Department of Agriculture
FOREST SERVICE

J-25

P 5/36

Chaffee NATIONAL FOREST

CORNERS OF THE PUBLIC SURVEY

T. 946 R. 3029 5th Mer.

Section Corner common to Sections
12, 7, 18, and 3

Corner consists of a SLD (not) in place
State condition

Dimensions above ground Underground inches
Sketch grooves, letters, figures, or notches, on proper face or edge.

CARDINAL POSITION

DIAGONAL POSITION

N	W	S	E

NW	SW	SE	NE

Mound of _____ is located _____

Pits are located _____

Sketch markings of Bearing Trees (or Rocks) in proper box and fill blanks below, giving bearings from Corner to Trees and Distances in Links.

T-146 R-29 S-18	T-146 R-29 S-7	T-146 R-30 S-12	T-146 R-30 S-13
-----------------------	----------------------	-----------------------	-----------------------

BT	BT	BT	BT
----	----	----	----

Species Oak Oak Pine Oak

Diameter 8" 24" 20" 24"

Bearing S15 E N85 E N-65 W S-25 W

Distance 75' 60' 140' 215'

Do you believe this to be a genuine Land Office Corner? Y

If not, why? _____

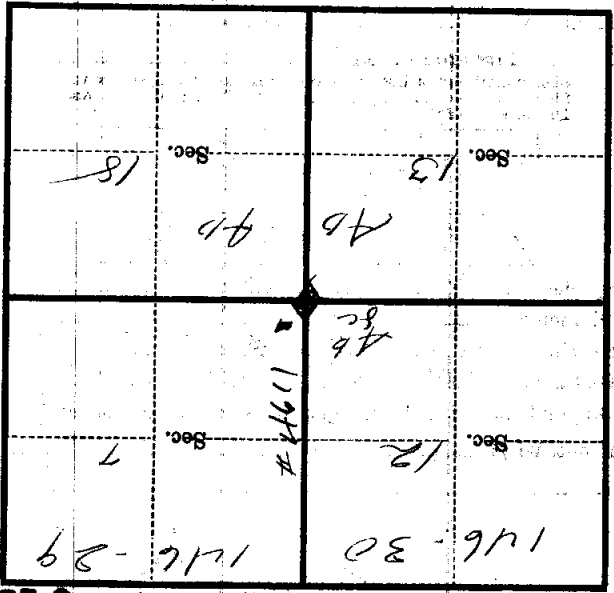
Mansfield
(Signature)

12/6/34
(Date)

(Title) J-25

*Corner again.
Burrup Lake from lower
corner and garage on east
side of road about 8 chains
north of corner*

Metal Location Poster is on a *Michigan*
tree inches diameter, on the *east*
side of *road* from which this Corner bears *N 80 E*
by chains distant:



(Make sketch of topography near Corner)

J-25
Met.

T. 146 R. 35

U. S. Department of Agriculture
FOREST SERVICE

J-25

Chippewa NATIONAL FOREST

CORNERS OF THE PUBLIC SURVEY

T. 146 R. 30-29 Mer.

Section Corner common to Sections
12, 7, 18, and 13

Corner consists of a N. L. O. (not) in place
State condition _____

Dimensions above ground inground inches
Sketch grooves, letters, figures, or notches, on proper face or edge.

CARDINAL POSITION

DIAGONAL POSITION

--	--	--	--

N W S E

--	--	--	--

NW SW SE NE

Mound of _____ is located _____

Pits are located _____

Sketch markings of Bearing Trees (or Rocks) in proper box and fill blanks below, giving bearings from Corner to Trees and Distances in Links.

146-29
S-18

146-29
S-7

146-30
S-12

146-30
S-13

BT

BT

BT

BT

Species	<u>Oak</u>	<u>Oak</u>	<u>NIP</u>	<u>Oak</u>
Diameter	<u>8"</u>	<u>24"</u>	<u>20"</u>	<u>24"</u>
Bearing	<u>S 15° E</u>	<u>N 25° E</u>	<u>W 25° N</u>	<u>S 25° W</u>
Distance	<u>75'</u>	<u>60'</u>	<u>140'</u>	<u>215'</u>

Do you believe this to be a genuine Land Office Corner? Yes
If not, why? _____

M. F. Murphy
(Signature)

12/6/24
(Date)

(Title)

J-25

Blank grid area at the top of the page.

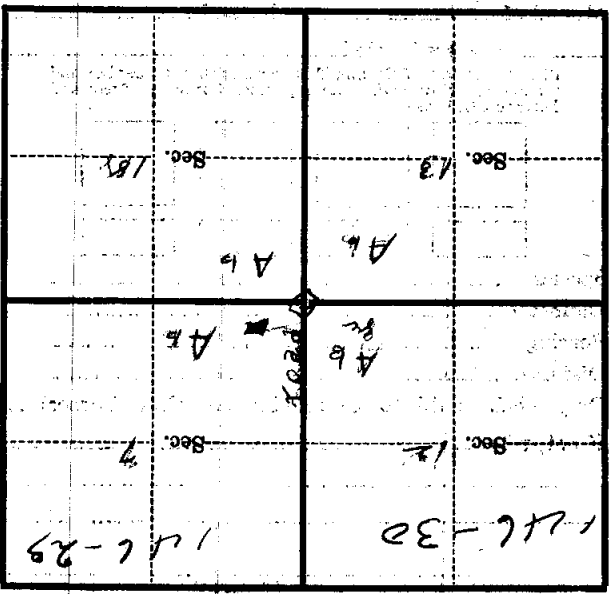
Corner again.
Burrum John from tower corner
and garage on east side of
road about 6 or 8 ch. north of corner

Give any further facts which will aid in finding this
chains distant.

from which this Corner bears *E 1/2 N*

side of ~~road~~
tree inches diameter, on the ~~east~~

Metal Location Poster is on a *tripod pole*



(Make sketch of topography near Corner)