

**U. S. Department of Agriculture**  
**FOREST SERVICE**

**E-17**

----- NATIONAL FOREST

**CORNERS OF THE PUBLIC SURVEY**T. 146 R. 30 Mer.-----  
Section Corner common to Sections2, 3, 100, and 11Corner consists of a G. L. O. (not) in place

State condition -----

Dimensions above ground 6" inches

Sketch grooves, letters, figures, or notches, on proper face or edge.

CARDINAL POSITION

DIAGONAL POSITION

--	--	--	--

N W S E

--	--	--	--

NW SW SE NE

Mound of ----- is located -----

----- Pits are located -----

Sketch markings of Bearing Trees (or Rocks) in proper box and fill blanks below, giving bearings from Corner to Trees and Distances in Links.

146-30 S-11	146-30 S-2	146-30 S-3	146-30 S-10
----------------	---------------	---------------	----------------

BT	BT	BT	BT
----	----	----	----

Species Spine Spine Tamarack TamarackDiameter 8" 8" 10" 8"Bearing SE NE NW SWDistance 24' 30' 30' 100'Do you believe this to be a genuine Land Office Corner? Yes

If not, why? -----

-----

-----

W. J. Murphy

(Signature)

12/6-34

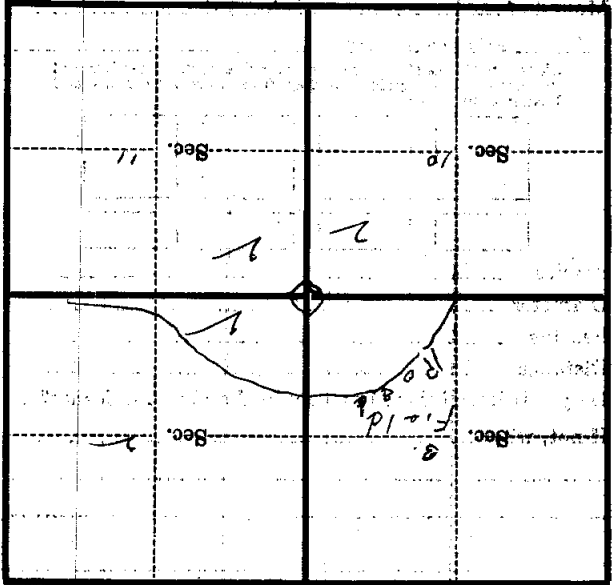
(Date)

(Title)

**E-17**

Corner again.  
Corner in survey, road corner  
NE about 10 E. W. of corner, corner  
approximately south of W. 1/2 on road

Metal Location Poster is on a tree inches diameter, on the side of from which this Corner bears chains distant. Give any further facts which will aid in finding this



(Make sketch of topography near corner)