

U. S. Department of Agriculture  
FOREST SERVICE

----- NATIONAL FOREST

CORNERS OF THE PUBLIC SURVEY

T146 ----- R. 29 ----- 5 Mer.

$\frac{1}{4}$  ----- Corner common to Sections  
35 36 -----, and -----

Corner consists of a small dead J P squared top stump 4 ft high 4" diam. (not) in place

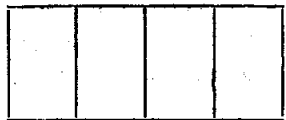
State condition -----

Dimensions above ground ----- inches

Sketch grooves, letters, figures, or notches, on proper face or edge.

CARDINAL POSITION

DIAGONAL POSITION



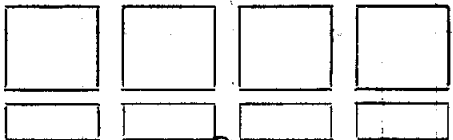
N W S E

NW SW SE NE

Mound of ----- is located -----

Pits are located -----

Sketch markings of Bearing Trees (or Rocks) in proper box and fill blanks below, giving bearings from Corner to Trees and Distances in Links.



Species J P dead J P stump 4ft high

Diameter 15 12

Bearing S N 75 W

Distance 12 30

Do you believe this to be a genuine Land Office Corner? no

If not, why? B Ts are.

(Signature)

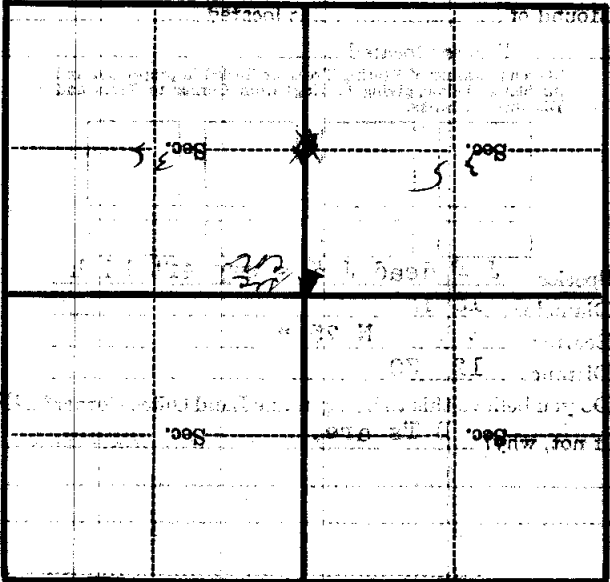
(Date)

(Title)

Blank lined area for notes at the top of the page.

Corner again  
checked by young Jack  
white o. rocks  
200 ft high  
checked by young Jack  
white o. rocks  
200 ft high  
checked by young Jack  
white o. rocks  
200 ft high

Give any further facts which will aid in finding this  
chain distant.  
from which this Corner bears  
side of  
tree  
inches diameter, on the  
Metal Location Poster is on a



(Make sketch of topography near Corner)