

Y-5

Form 874-9—Revised May, 1918

U. S. Department of Agriculture  
FOREST SERVICE

Chippewa NATIONAL FOREST

CORNERS OF THE PUBLIC SURVEY

T. 148N R. 29W 5th Mer.

S 1/16 Corner common to Sections

31, and 32

Corner consists of a metal cap (not) in place

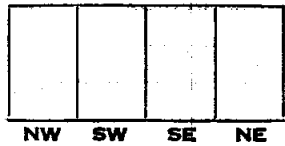
State condition good

Dimensions above ground 4 inches

Sketch grooves, letters, figures, or notches, on proper face or edge.

CARDINAL POSITION

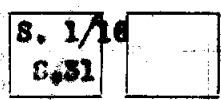
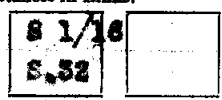
DIAGONAL POSITION



Mound of \_\_\_\_\_ is located \_\_\_\_\_

Pits are located \_\_\_\_\_

Sketch markings of Bearing Trees (or Rocks) in proper box and fill blanks below, giving bearings from Corner to Trees and Distances in Links.



Species J. Pine J. Pine

Diameter 10" 9"

Bearing N 80 S 85E

Distance 48 lks 47 lks

Do you believe this to be a genuine Land Office Corner? yes

If not, why? \_\_\_\_\_

Harold Hermes  
(Signature)

March 10, 1937  
(Date)

(Title) Y-5

SECTION 31 AND 32

SECTION 31 AND 32

SECTION 31 AND 32

CORNERS OF THE ROUTE

Corner again.

Give any further facts which will aid in finding this

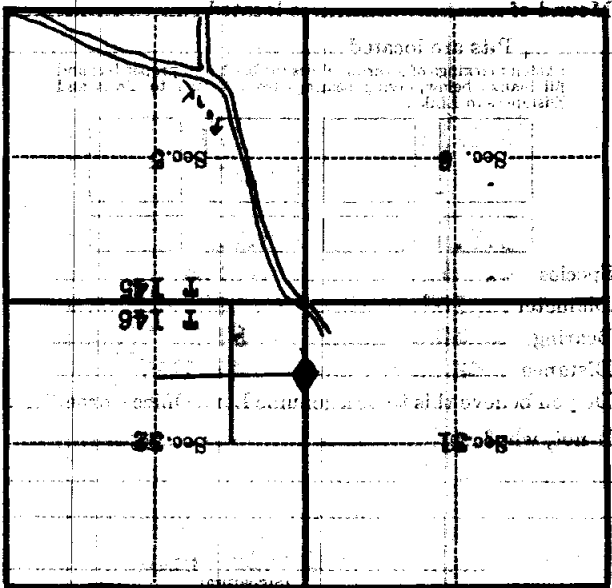
change distant

from which this Corner bears

side of

tree inches diameter, on the

Metal Location Post is on a



(Make sketch of topography near Corner)

U. S. Department of Agriculture  
FOREST SERVICE

Chippewa NATIONAL FOREST

CORNERS OF THE PUBLIC SURVEY

T. 146N R. 29W 5th Mer.  
S 1/16

Corner common to Sections  
31, and 32

Corner consists of a metal cap (not) in place  
State condition good

Dimensions above ground 4 inches  
Sketch grooves, letters, figures, or notches, on proper face or edge.

CARDINAL POSITION

DIAGONAL POSITION

	<u>31</u>		<u>32</u>
N	W	S	E

NW	SW	SE	NE

Mound of \_\_\_\_\_ is located \_\_\_\_\_

Pits are located \_\_\_\_\_

Sketch markings of Bearing Trees (or Rocks) in proper box and fill blanks below, giving bearings from Corner to Trees and Distances in Links.

<u>S 1/16</u>	
<u>S. 32</u>	

<u>S. 1/16</u>	
<u>S. 31</u>	

<u>B.T.</u>	
-------------	--

<u>B.T.</u>	
-------------	--

Species J. Pine J. Pine

Diameter 10" 9"

Bearing W 50 S SSE

Distance 42 lks 47 lks

Do you believe this to be a genuine Land Office Corner? yes

If not, why? \_\_\_\_\_

Harold Hennes

(Signature)

March 10, 1937

(Date)

(Title)

# UNITED STATES GEOLOGICAL SURVEY

WATER RESOURCES DIVISION

REPORT OF INVESTIGATION

## COMMENTS ON THE FIELD NOTES

FIELD NO. 1000

DATE OF FIELD WORK, 1933

NO. OF SHEETS, 12

GENERAL STATEMENT OF THE CASE

Corner again.

Give any further facts which will aid in finding this

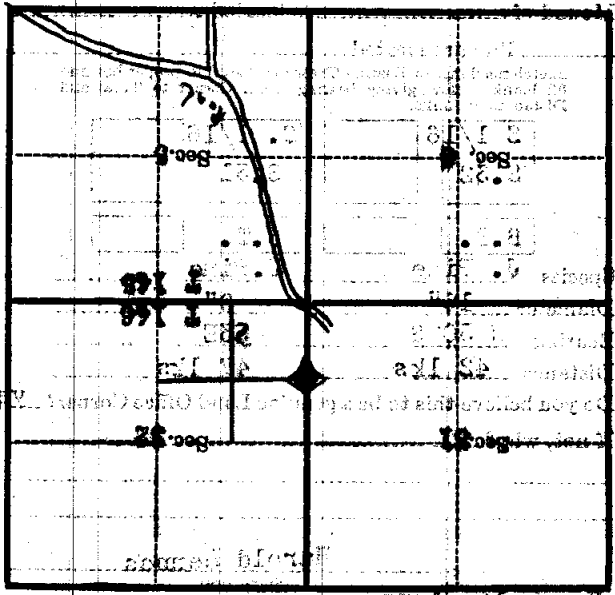
corner distant.

from which this corner bears

side of

tree 21 inches diameter, on the

Metal Location Poster is on a



Map showing of topography near Corner