

U. S. Department of Agriculture
FOREST SERVICE

L-9

Posted

Chippawa NATIONAL FOREST

CORNERS OF THE PUBLIC SURVEY

T. 146N R. 26W 5th Mer.

Quarter Corner: Corner common to Sections

16, 17, and
Center of road 444 from BT TAKHOOS corner (west)
Corner consists of a (not) in place

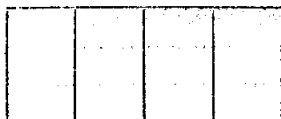
State condition

Dimensions above ground inches

Sketch grooves, letters, figures, or notches, on proper face or edge.

CARDINAL POSITION

DIAGONAL POSITION



N W S E

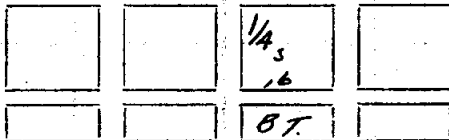


NW SW SE NE

Mound of is located

Pits are located

Sketch markings of Bearing Trees (or Rocks) in proper box and fill blanks below, giving bearings from Corner to Trees and Distances in Links.



Species *Tax.*

Diameter *10"*

Bearing *N62°E*

Distance *444*

Do you believe this to be a genuine Land Office Corner?

If not, why?

Original Bearing Tree, but stake is missing

July J. Fuller
(Signature)

Oct 9 1934
(Date)

(Title)

Subdivision of Township

Range 26 West

17/16
20/21

Corner

Bearing Tree on Right side of road.
Going North - 15 Ft from Telephone Pole
Exactly 40 ch 30 Links North of

Corner again.

Give any further facts which will aid in finding this

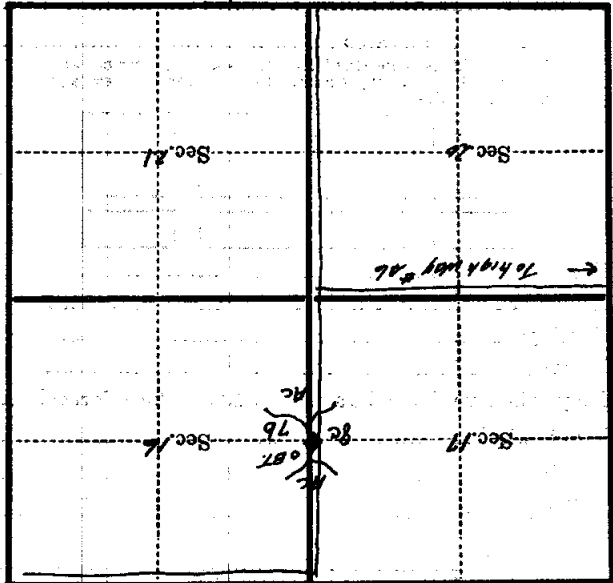
chains distant.

from which this Corner bears

side of

tree inches diameter, on the

Metal Location Poster is on a No Poster



(Make sketch of topography near Corner)

U. S. Department of Agriculture
FOREST SERVICE

69

NATIONAL FOREST

CORNERS OF THE PUBLIC SURVEY

T. 146 N. R. 26 W. Mer.

Corner common to Sections

16, and 17

Corner consists of a (not) in place

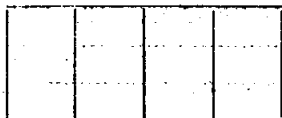
State condition

Dimensions above ground inches

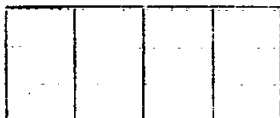
Sketch grooves, letters, figures, or notches, on proper face or edge.

CARDINAL POSITION

DIAGONAL POSITION



N W S E

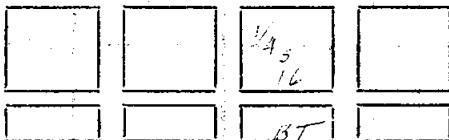


NW SW SE NE

Mound of is located

Pits are located

Sketch markings of Bearing Trees (or Rocks) in proper box and fill blanks below, giving bearings from Corner to Trees and Distances in Links.



Species 100

Diameter 10 1/2

Bearing N. 64° E

Distance 84 L.

Do you believe this to be a genuine Land Office Corner? Yes

If not, why?

original BT not stake is

Missing

(Signature)

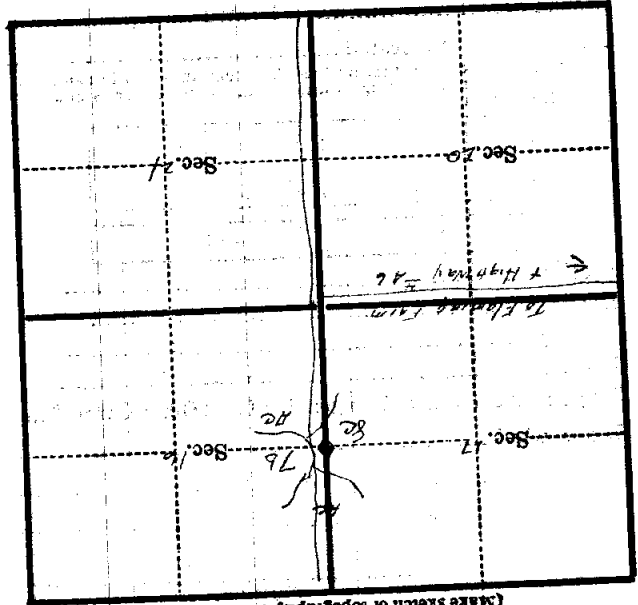
(Date)

(Title)

67

Corner again.
 RT on right hand side of road going north
 from Salina corner 15 ft from telephone pole
 17/15
 1/2 | 21

Metal Location Poster is on a tree inches diameter, on the side of from which this Corner bears chains distant. Give any further facts which will aid in finding this



(Make sketch of topography near Corner)

U. S. Department of Agriculture
FOREST SERVICE

179

Chippewa NATIONAL FOREST
CORNERS OF THE PUBLIC SURVEY

T. *146* R. *26* Mer. *5*

Corner common to Sections
16, and *17*

Corner consists of a *Road center* (not) in place
State condition

Dimensions above ground _____ inches
Sketch grooves, letters, figures, or notches, on proper face or edge.
CARDINAL POSITION DIAGONAL POSITION

--	--	--	--

N. W. S. E.

--	--	--	--

NW SW SE NE

Mound of _____ is located

Pits are located

Sketch markings of Bearing Trees (or Rocks) in proper box and fill blanks below, giving bearings from Corner to Trees and Distances in Links.

		<i>14</i> <i>5</i> <i>16</i>	
		<i>B+</i>	

Species _____ *Tom*

Diameter _____ *10*

Bearing _____ *N60°E*

Distance _____ *4.41*

Do you believe this to be a genuine Land Office Corner? *Yes*

If not, why?

(Signature)

(Date)

(Title)

67

CORNER OF THE PUBLIC SURVEY

(3) Give any further facts which will aid in finding this corner again.

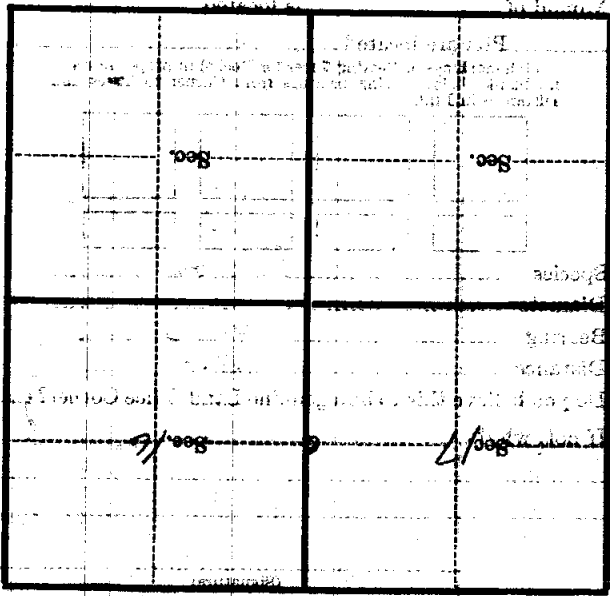
chains distant.

from which this Corner bears

side of

tree inches diameter, on the

Metal Location Poster is on a



(Make sketch of topography near Corner)

U. S. Department of Agriculture
FOREST SERVICE

4-9

Chippewa NATIONAL FOREST
CORNERS OF THE PUBLIC SURVEY

T. 146 N. R. 20 W. 5th Mer.

1/4 Corner common to Sections

Corner consists of a ¹⁶ Road Center ^{and 17} taken as corner (not) in place

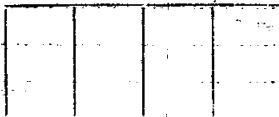
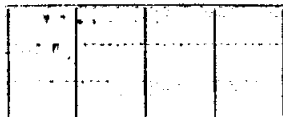
State condition

Dimensions above ground inches

Sketch grooves, letters, figures, or notches, on proper face or edge.

CARDINAL POSITION

DIAGONAL POSITION



N

W

S

E

NW

SW

SE

NE

Mound of is located

Pits are located

Sketch markings of Bearing Trees (or Rocks) in proper box and fill blanks below, giving bearings from Corner to Trees and Distances in Links.



Species Jam

Diameter 10"

Bearing N60°E

Distance 44 L.

Do you believe this to be a genuine Land Office Corner?

If not, why?

Original B.T. but stake is missing.

(Signature)

(Date)

(Title)

67

1916
20/21

B.T. on right hand side of Road
going North from section corner
15 ft. from telephone pole 40 ch.
30 links

Corner again.

Give any further facts which will aid in finding this

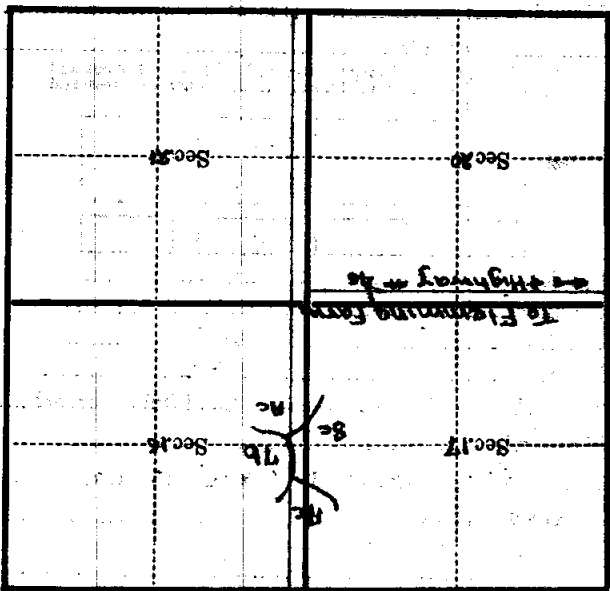
chains distant.

from which this Corner bears

side of

tree inches diameter, on the

Metal Location Poster is on a



(Make sketch of topography near Corner)

T. 146 N. R. 26 W. 5th Mer.