

U. S. Department of Agriculture
FOREST SERVICE

N-9
6-9

NATIONAL FOREST

CORNERS OF THE PUBLIC SURVEY

T. 19th R. 26th Mer.

Section corner Corner common to Sections

17, 20, 16, and 21

Corner consists of a ^{taken in center of road at inter section} ~~of road~~ (not) in place

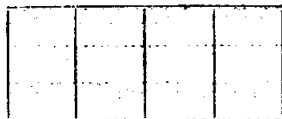
State condition

Dimensions above ground inches

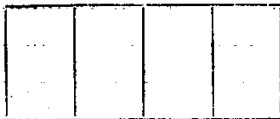
Sketch grooves, letters, figures, or notches, on proper face or edge.

CARDINAL POSITION

DIAGONAL POSITION



N W S E



NW SW SE NE

Mound of is located

Pits are located

Sketch markings of Bearing Trees (or Rocks) in proper box and fill blanks below, giving bearings from Corner to Trees and Distances in Links.



Species Birch ^{BT} Aspen Birch

Diameter 12 10

Bearing S 60° E N 50° W S 47° W

Distance 159 159 links 114 links

Do you believe this to be a genuine Land Office Corner? Yes

If not, why? All bearings are to trees

But stake was from railroad

found

(Signature)

(Date)

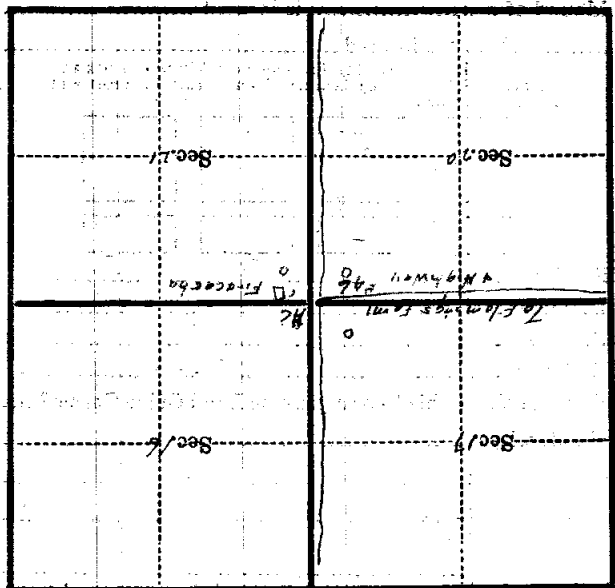
(Title)

66

.....
.....
.....
.....
.....

Corner again.
Corner, 50 ft. in Road, Lincoln, 36 ft. in K.S.
East

Give any further facts which will aid in finding this
chains distant.
from which this Corner bears
side of
tree..... inches diameter, on the
Metal Location Poster is on a



(Make sketch of topography near Corner)

U. S. Department of Agriculture
FOREST SERVICE

Posted

N-9

Chippawa..... NATIONAL FOREST

CORNERS OF THE PUBLIC SURVEY

T. *146N* R. *26W* *5th* Mer.

Section..... Corner common to Sections

16, 17, 20, and 21

Taken as center of road at intersection.
Corner consists of a..... (not) in place

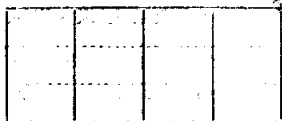
State condition.....

Dimensions above ground..... inches

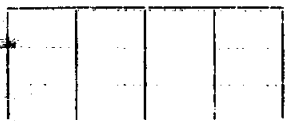
Sketch grooves, letters, figures, or notches, on proper face or edge.

CARDINAL POSITION

DIAGONAL POSITION



N W S E



NW SW SE NE

Mound of..... is located.....

Pits are located.....

Sketch markings of Bearing Trees (or Rocks) in proper box and fill blanks below, giving bearings from Corner to Trees and Distances in Links.

	<i>51 1/2</i>	<i>52 1/2</i>	<i>52 1/2</i>
	<i>R. 26 W</i>	<i>T. 146 N</i>	<i>T. 146 N</i>
	<i>S. 21</i>	<i>R. 26 W</i>	<i>R. 26 W</i>
		<i>S. 17</i>	<i>S. 20</i>
	<i>BT.</i>	<i>BT.</i>	<i>BT.</i>

Species..... *Birch*..... *Aspen*..... *Birch*.....

Diameter..... *11"*..... *17"*..... *10"*.....

Bearing..... *S. 60° E*..... *N. 50° W*..... *S. 47° W*.....

Distance..... *159 ft.*..... *159 ft.*..... *110 ft.*.....

Do you believe this to be a genuine Land Office Corner?.....

If not, why?..... *All Bearing Trees are Land Office Markings, but stake has been removed for road right away.*

Mabel T. Fuller
(Signature)

Oct 9, 1933
(Date)

Arch Forman
(Title)

Section 20

Section 21

Section 22

Section 23

Section 24

Section 25

Section 26

Section 27

Section 28

Section 29

Section 30

Section 31

Section 32

Section 33

Section 34

Section 35

Section 36

Section 37

Section 38

Section 39

Section 40

Section 41

Section 42

Section 43

Section 44

Section 45

Section 46

Section 47

Section 48

Section 49

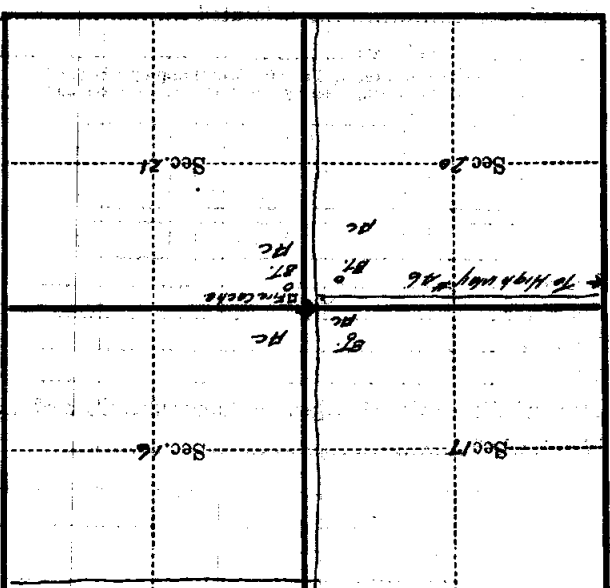
Section 50

Corner removed for road right away.
 Readings to bearing trees from
 point 26 links west of fire cache.

Corner again.

Give any further facts which will aid in finding this
 chains distant.

from which this Corner bears
 side of
 tree... inches diameter, on the
 Metal Location Poster is on a *No Poster*



(Make sketch of topography near Corner)

Form 874-C—Revised May, 1918
 U. S. Department of Agriculture
 FOREST SERVICE

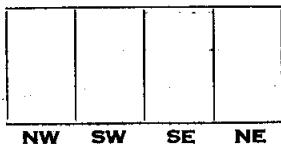
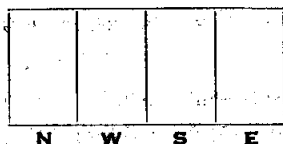
Chippewa NATIONAL FOREST
 CORNERS OF THE PUBLIC SURVEY

T. 146R R. 26W 5 Mer.

SECTION Corner common to Sections
 17, 20, 16, and 21

Corner consists of a TAKEN AT CONTACT in place
 State condition OF ROAD AT INTERSECTION

Dimensions above ground OF ROAD inches
 Sketch grooves, letters, figures, or notches, on proper face or edge.
 CARDINAL POSITION DIAGONAL POSITION



Mound of _____ is located _____

Pits are located _____

Sketch markings of Bearing Trees (or Rocks) in proper box and fill blanks below, giving bearings from Corner to Trees and Distances in Links

	STAMP 5146 B 26 500.21	5146 B 26	5146 A 26
	B.T.	500.17	500.20

Species Birch Aspen Birch
 Diameter 11 12 10
 Bearing S 60° E N 50° W S 47° W
 Distance 159 69 110

Do you believe this to be a genuine Land Office Corner? NO
 If not, why? All Bearing are to trees
But stake has been removed
For Road

(Signature)

(Date)

(Title)

U.S. Geological Survey

Form 1000

CORNER OF THE PUBLIC DOMAIN

Corner again.

Give any further facts which will aid in finding this

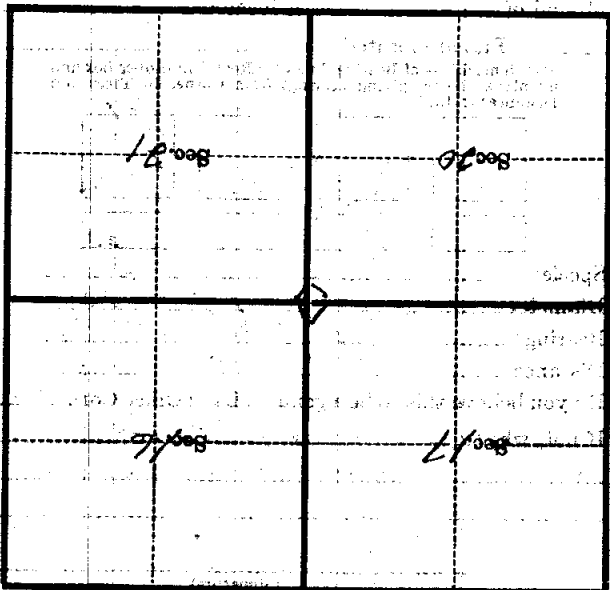
chain distant.

from which this Corner bears

side of

tree inches diameter, on the

Metal Location Poster is on a



(Make sketch of topography near Corner)

T. 146 R. 26 Mer. 5

U. S. Department of Agriculture
FOREST SERVICE

2-9

Chippewa NATIONAL FOREST

CORNERS OF THE PUBLIC SURVEY

T. 146 N. R. 26 W. 5th Mer.

Section

Corner common to Sections

17, 20, 21, and 16

Corner consists of a section of road (not) in place
Taken in center of road at inter-

State condition

Dimensions above ground inches

Sketch grooves, letters, figures; or notches, on proper face or edge.

CARDINAL POSITION

DIAGONAL POSITION

--	--	--	--

N W S E

--	--	--	--

NW SW SE NE

Mound of is located

Pits are located

Sketch markings of Bearing Trees (or Rocks) in proper box and fill blanks below, giving bearings from Corner to Trees and Distances in Links

Stump 5 ft (Snag 25 ft) (Snag) 20 ft.

--

T. 146 N.
R. 26
Sec. 21

--

T. 146 N.
R. 26 W.

--

T. 146 N.
R. 26 W.

--

Bt

--

Sec. 17

--

Sec. 20

Species *Birch^{8"} Aspen^{8"} Birch^{8"}*

Diameter *11" 12 10*

Bearing *S 60° E N 50° W S 77° W*

Distance *159 159 links 112 links*

Do you believe this to be a genuine Land Office Corner? *Yes*

If not, why? *All bearing are G.L.O. Trees but stake has been removed for road.*

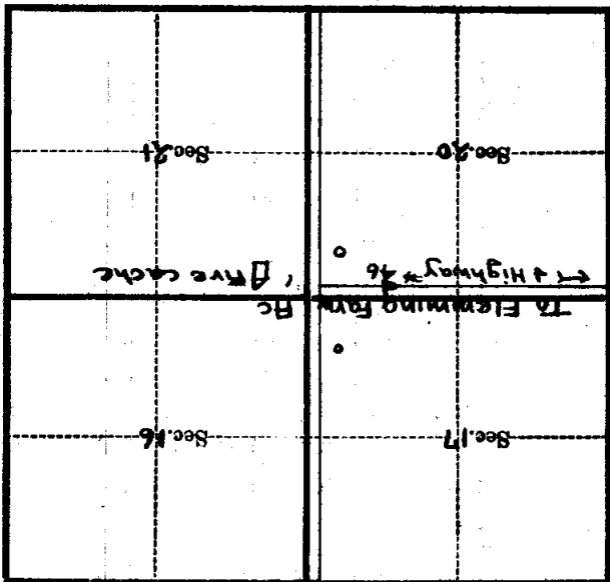
(Signature)

(Date)

(Title)

Corner again.
Corner set in road. Fire cache
36 links East.

Metal Location Poster is on a
tree inches diameter, on the
side of
from which this Corner bears
chains distant.
Give any further facts which will aid in finding this



(Make sketch of topography near Corner)

T. 146 N. R. 26 W. 5th Mer.