

U. S. DEPARTMENT OF AGRICULTURE
FOREST SERVICE

Min NATIONAL FOREST V-9

CORNERS OF THE PUBLIC SURVEY

T. 146 R. 26 S. 3 Mer.

Corner common to Sections

29, 28, 32, and 33

DESCRIPTION OF CORNER

Corner consists of a _____

Dimension above ground _____ inches.

Sketch grooves, letters, figures, or notches, on proper face or edge.

CARDINAL POSITION

DIAGONAL POSITION

--	--	--	--

N W S E

--	--	--	--

NW SW SE NE

Mound of _____ is located _____

Pits are located _____

Sketch markings of Bearing Trees (or Rocks) in proper box and fill blanks below, giving bearings from Corner to Trees and Distances in Links.

Species	<u>SP. pine</u>	<u>No.</u>	
Diameter	<u>11</u>	<u>18</u>	
Bearing	<u>N45P</u>	<u>N20W</u>	
Distance	<u>16'</u>	<u>36'</u>	

Do you believe this to be a genuine Land Office Corner? Yes

If not, why? _____

7-10-27
Date.

[Signature]
Signature
J. F.
Title. V-9

(Make sketch of topography near corner)

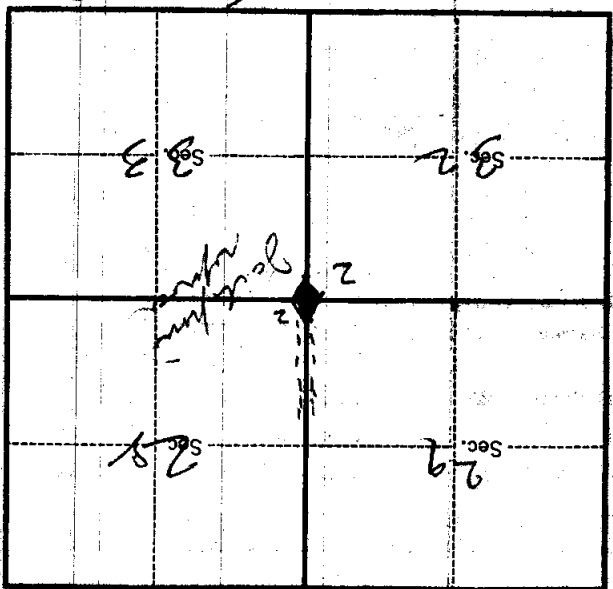
V-9

Mer.

R. 26

S

T. 116



Metal Location Poster is on a side of tree 11 inches diameter, on the *East* side of *Post* from which this corner bears *N 85 W* 25 chains distant.

Give any further facts which will aid in finding this Corner again.

Post at 34
Post at 34
Post at 34
Post at 34

U. S. Department of Agriculture
FOREST SERVICE

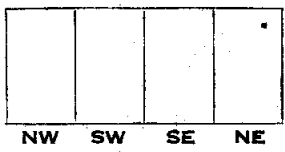
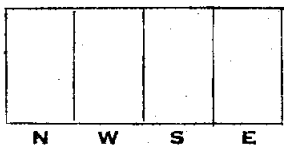
V-9

Chippewa NATIONAL FOREST
CORNERS OF THE PUBLIC SURVEY

T. *146N* R. *R6W* *5th* Mer.
Section Corner common to Sections
29, 28, 32, and 33

Corner consists of a *wood post* (not) in place
State condition *Fair*

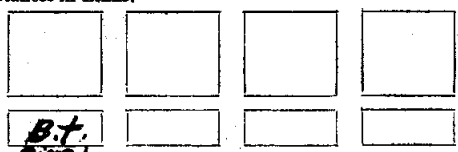
Dimensions above ground *4" x 4" x 30"* inches
Sketch grooves, letters, figures, or notches, on proper face or edge.



Mound of _____ is located _____

Pits are located _____

Sketch markings of Bearing Trees (or Rocks) in proper box and fill blanks below, giving bearings from Corner to Trees and Distances in Links.



Species *White Pine* _____
 Diameter *12"* _____
 Bearing *N 24 W* _____
 Distance *56* _____

Do you believe this to be a genuine Land Office Corner? *yes*

If not, why? _____

Walter H. Hale

(Signature)

Leader

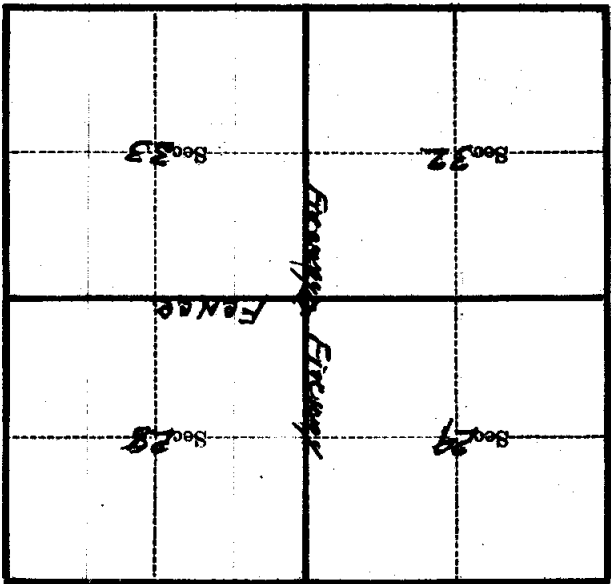
(Title)

1925/38

(Date)

Corner again.
Give any further facts which will aid in finding this

Metal Location Poster is on a *J. PINE*
tree *14* inches diameter, on the *N.W.*
side of *CORNER*
from which this Corner bears *N30°W*
72 LKS chains distant.



(Make sketch of topography near Corner)

T. 146N R. 26W
5th Mer.

J. PINE 12" N89°W
72 LKS. WT.