

Form 674-9—Revised May, 1918
U. S. Department of Agriculture
FOREST SERVICE

75

Chippewa NATIONAL FOREST
CORNERS OF THE PUBLIC SURVEY

T. 146N R. 26W 5 Mer.

NC

Corner common to Sections

30, and 29

Corner consists of a rod (not) in place

State condition good

Dimensions above ground _____ inches

Sketch grooves, letters, figures, or notches, on proper face or edge.

CARDINAL POSITION

DIAGONAL POSITION

--	--	--	--

N W S E

--	--	--	--

NW SW SE NE

Mound of _____ is located _____

Pits are located _____

Sketch markings of Bearing Trees (or Rocks) in proper box and fill blanks below, giving bearings from Corner to Trees and Distances in Links.

Species Stump Hole

Diameter _____

Bearing 52° 30' W

Distance 90

Do you believe this to be a genuine Land Office Corner? Yes

If not, why? _____

(Signature)

(Date)

(Title)

1106

U.S. DEPARTMENT OF AGRICULTURE
FOREST SERVICE

NATIONAL FOREST

CORNERS OF THE PUBLIC SURVEY

Corner of a section of the public survey in the
County of _____ State of _____
Corner of _____

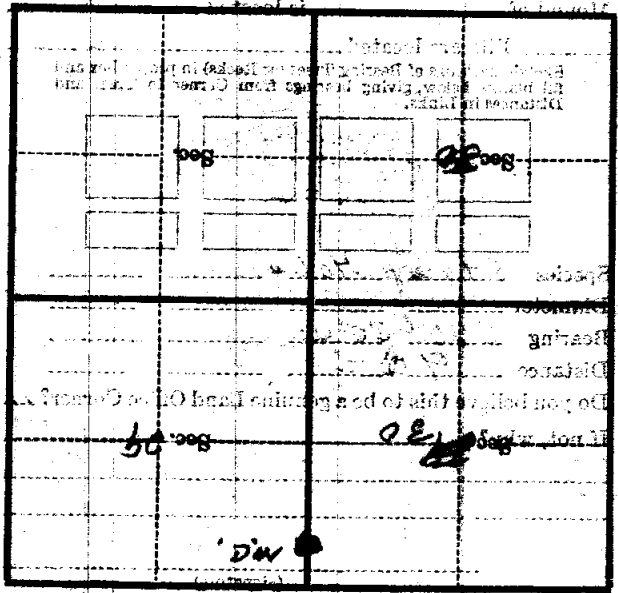
Give any further facts which will aid in finding this
corner of a section of the public survey in the
County of _____ State of _____

Chain detail

from which this corner bears
side of _____

tree inches diameter, on the

Metal Location Poster is on a



(Make sketch of topography near corner)

U. S. Department of Agriculture
FOREST SERVICE

151

Chippewa NATIONAL FOREST
CORNERS OF THE PUBLIC SURVEY

T. 146 N R. 26 W 5th Mer.

1/4 ~~As~~ Corner common to Sections
30 - 29, and

Corner consists of a Car-Atel (see) in place

State condition Good

Dimensions above ground 18" inches

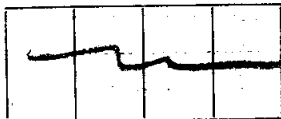
Sketch grooves, letters, figures, or notches, on proper face or edge.

CARDINAL POSITION

DIAGONAL POSITION



N W S E



NW SW SE NE

Mound of _____ is located _____

Pits are located _____

Sketch markings of Bearing Trees (or Rocks) in proper box and fill blanks below, giving bearings from Corner to Trees and Distances in Links.

5-
30

5-
29

BT

BT

Species SPine SPine

Diameter 2" 2"

Bearing S-60°W S-36°E

Distance 43 1/2 LKs 40 LKs

Do you believe this to be a genuine Land Office Corner?

If not, why? Re-established Corner

Perhaps - by County

Surveyor

Boike
(Signature)

Aug. 1936 Dist. of Party

(Date) (Title)

CORNERS OF THE PUBLIC SURVEY

at *Point of View* *Corner*
of *Section 36* *Range 10 N*
of *Township 10 N* *Range 10 E*

Give any further facts which will aid in finding this

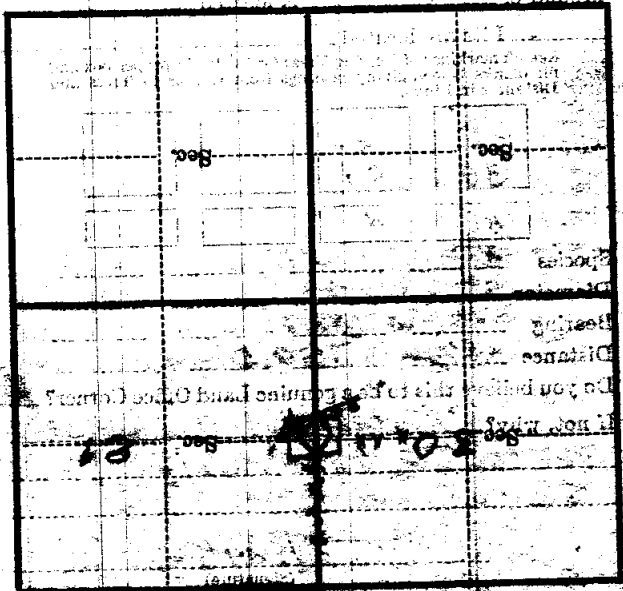
corner

from which this corner bears

side of

tree inches diameter, on the

Metal Location Poster is on a



(Scale of 1 inch = 40 rods)

1881

R

T. 10 N

Form 874-9- Revised May, 1918
U. S. Department of Agriculture
FOREST SERVICE

7-5

Chippewa NATIONAL FOREST
CORNERS OF THE PUBLIC SURVEY

T. 146 R. 26 S. Mer.

1/4 Corner common to Sections

30, and 29

Corner consists of a Cor Axel (not) in place

State condition good

Dimensions above ground 18" inches

Sketch grooves, letters, figures, or notches, on proper face or edge.

CARDINAL POSITION

DIAGONAL POSITION

--	--	--	--

--	--	--	--

N W S E

NW SW SE NE

Mound of _____ is located _____

Pits are located _____

Sketch markings of Bearing Trees (or Rocks) in proper box and fill blanks below, giving bearings from Corner to Trees and Distances in Links.

S 30	S 29		
BT	BT		

Species J.P. J.P.

Diameter 9" 7"

Bearing 56°W 536°E

Distance 43 1/2 60

Do you believe this to be a genuine Land Office Corner? Yes

If not, why? Reestablished Corner

Gezhaps by County

Surveyor

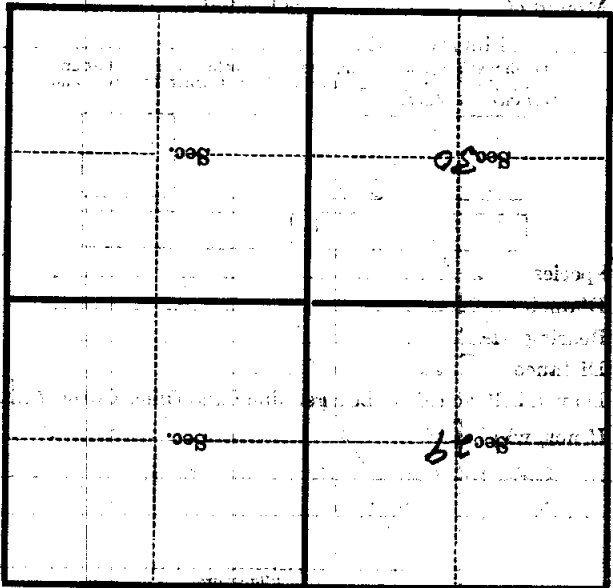
(Signature)

(Date)

(Title)

WATER RESOURCES DIVISION
FIELD NOTES

Metal Location Poster is on a tree _____ inches diameter, on the side of _____ from which this Corner bears _____ chains distant. Give any further facts which will aid in finding this Corner again.



(Make sketch of topography near Corner)

U. S. DEPARTMENT OF AGRICULTURE
FOREST SERVICE

T-5

Chips

NATIONAL FOREST

CORNERS OF THE PUBLIC SURVEY

T. 146 N. R. 26 W. 5 Mer.

1/4 Corner common to Sections

29, and 30

DESCRIPTION OF CORNER

Corner consists of a 59.5 stone

Dimension above ground 18 inches.

Sketch grooves, letters, figures, or notches, on proper face or edge.

CARDINAL POSITION

DIAGONAL POSITION

1/4 3	S30	1/4 3	S29
----------	-----	----------	-----

--	--	--	--

N W S E

NW SW SE NE

Mound of _____ is located _____

Pits are located _____

Sketch markings of Bearing Trees (or Rocks) in proper box and fill blanks below, giving bearings from Corner to Trees and Distances in Links.

1/4 5
30

1/4 5
29

BT

BT

Species JP JP

Diameter 8" 8"

Bearing S51W S46E

Distance 28 1/2 ch

Do you believe this to be a genuine Land Office Corner? No

If not, why? Resurvey to mark out claim

Signature C. B. S. [Signature]

Signature.

Date 9-26-28

Title F. Ranger

