

U. S. Department of Agriculture

FOREST SERVICE

posted 1-13

Chickamauga

NATIONAL FOREST

CORNERS OF THE PUBLIC SURVEY

T. 146 R. 25 5 Mer.

Corner common to Sections 27, 27, 33, and 34

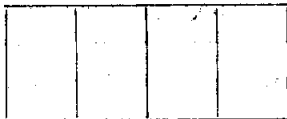
Corner consists of a (not) in place State condition

Dimensions above ground inches.

Sketch grooves, letters, figures, or notches, on proper face or edge.

CARDINAL POSITION

DIAGONAL POSITION



N

W

S

E

NW

SW

SE

NE

Mound of is located

Pits are located

Sketch markings of Bearing Trees (or Rocks) in proper box and fill blanks below, giving bearings from Corner to Trees and Distances in Links.



BT



BT



Species Elm 24' W 23'

Diameter 14 24

Bearing NW SW

Distance 12 12

Do you believe this to be a genuine Land Office Corner?

If not, why?

Road Survey

W. P. Waddy

(Signature)

12/4/38

(Date)

Assistant

(Title)

Corner again.

Give any further facts which will aid in finding this

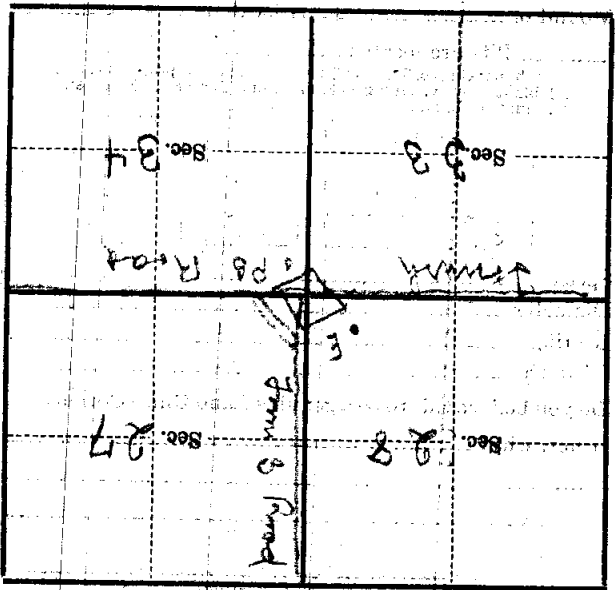
chains distant.

From which this Corner bears

side of

tree inches diameter, on the

Metal Location Poster is on a



(Make sketch of topography near Corner)

T. 14 N. R. 2 E. Mer.