

Form 874-9—Revised May, 1918  
U. S. Department of Agriculture  
FOREST SERVICE

*Copied  
Posted  
57  
136  
R 25*

NATIONAL FOREST

CORNERS OF THE PUBLIC SURVEY

T 145 ----- R. 51, 50 ----- 5 ----- Mer.

Corner common to Sections

24, 25, 19, 309, and -----

Corner consists of a <sup>5"</sup> ~~5"~~ **post scribed** (not) in place  
State condition -----

Dimensions above ground ----- inches

Sketch grooves, letters, figures, or notches, on proper face or edge.

CARDINAL POSITION

DIAGONAL POSITION

--	--	--	--

N W S E

--	--	--	--

NW SW SE NE

Mound of ----- is located -----

Pits are located -----

Sketch markings of Bearing Trees (or Rocks) in proper box and fill blanks below, giving bearings from Corner to Trees and Distances in Links.


Species -----

Diameter -----

Bearing -----

Distance -----

Do you believe this to be a genuine Land Office Corner? -----

If not, why? -----

(Signature)

(Date)

(Title)

Section 25

Section 25

Section 25

CORNERS OF THE PUBLIC SURVEY

no other marks

25" CORNER ON SEC 25

Corner again

Give any further facts which will aid in finding this

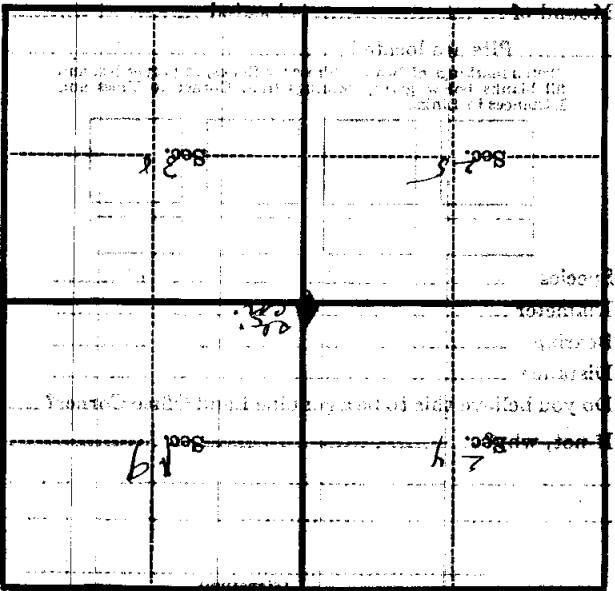
chains distant

from which this Corner bears

side of

tree inches diameter, on the

Metal Location Poster is on a



(Make sketch of topography near Corner)