

G-21  
C21

U. S. Department of Agriculture  
FOREST SERVICE

Chippewa NATIONAL FOREST

CORNERS OF THE PUBLIC SURVEY

T. 145N. R. 30W. 5th Mer.

Quarter Corner common to Sections  
1, and 2

Corner consists of a Metal Cap (not) in place

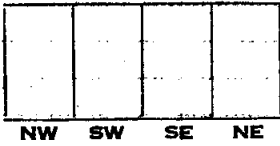
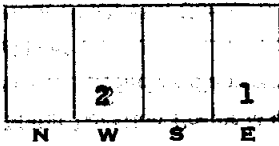
State condition Good

Dimensions above ground 3 inches

Sketch grooves, letters, figures, or notches, on proper face or edge.

CARDINAL POSITION

DIAGONAL POSITION



Mound of \_\_\_\_\_ is located \_\_\_\_\_

Pits are located \_\_\_\_\_

Sketch markings of Bearing Trees (or Rocks) in proper box and fill blanks below, giving bearings from Corner to Trees and Distances in Links.



B.T.

B.T.

Species N. Pine W. Pine

Diameter 12" 12"

Bearing S80 E. N78 W

Distance 94 lks. 38 lks.

Do you believe this to be a genuine Land Office Corner? Yes

If not, why? \_\_\_\_\_

Harold Hennes

(Signature)

Mar. 16, 1937

(Date)

(Title)

.....

.....

.....

.....

.....

.....

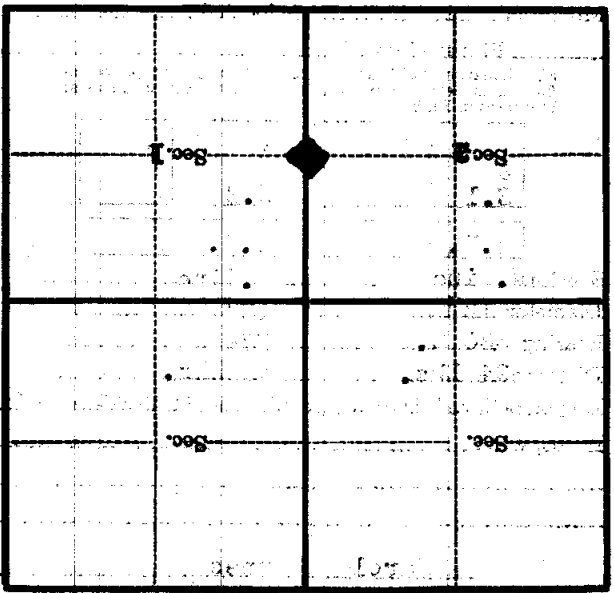
.....

.....

.....

Corner again.

Give any further facts which will aid in finding this  
 chain distant.  
 from which this Corner bears  
 side of  
 tree inches diameter, on the  
 Metal Location Pester is on a



(Make sketch of topography near Corner)