



Corner again.

Give any further facts which will aid in finding this

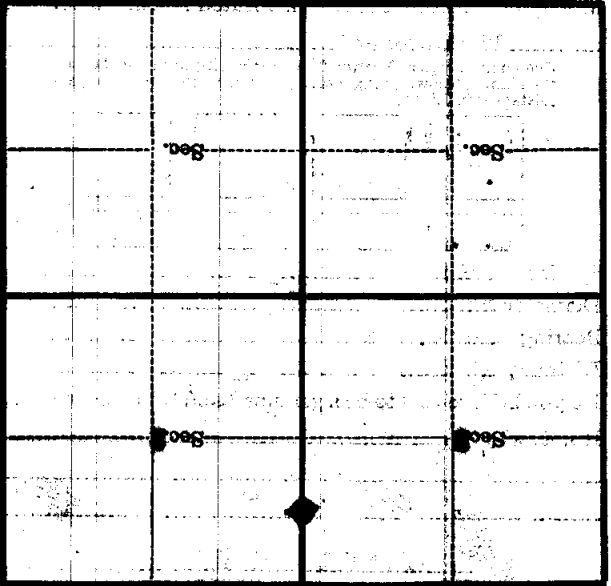
chain distant.

from which this Corner bears

side of

tree 8 inches diameter, on the

Metal Location Poster is on a



(Make sketch of topography near Corner)

U. S. Department of Agriculture  
FOREST SERVICE

B17

Chippewa NATIONAL FOREST

CORNERS OF THE PUBLIC SURVEY

T. 145 N. R. 30 W. 5th Mer.  
N. 1/16

Corner common to Sections

2, and 3

Corner consists of a Ash Post (not) in place

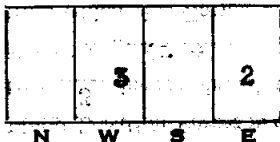
State condition Good

Dimensions above ground 3 feet inches

Sketch grooves, letters, figures, or notches, on proper face or edge.

CARDINAL POSITION

DIAGONAL POSITION



Mound of \_\_\_\_\_ is located \_\_\_\_\_

Pits are located \_\_\_\_\_

Sketch markings of Bearing Trees (or Rocks) in proper box and fill blanks below, giving bearings from Corner to Trees and Distances in Links.

<u>#7. 1/16</u>	
<u>S. 3</u>	

--

--

<u>B.T.</u>	
-------------	--

--

--

Species Aspen

Diameter 3"

Bearing S65 W.

Distance 13 Lks

Do you believe this to be a genuine Land Office Corner Yes

If not, why? \_\_\_\_\_

Harold H ENNES

(Signature)

Mar. 19 1937

(Date)

(Time)

Corner again.

Give any further facts which will aid in finding this

chain distant.

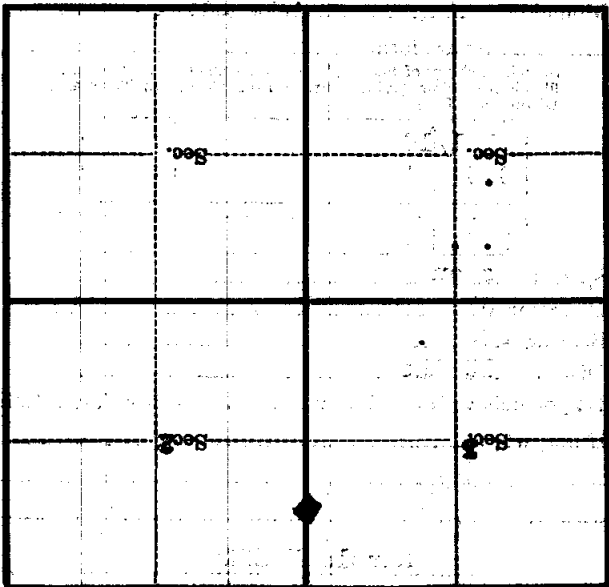
\$65 M.

from which this Corner bears

side of

tree 3 inches diameter, on the East

Metal Location Poster is on a Aspen



(Make sketch of topography near Corner)

T. 14E N. R. 30 W. 5th Mer.

B-17