

Corner again.

Give any further facts which will aid in finding this

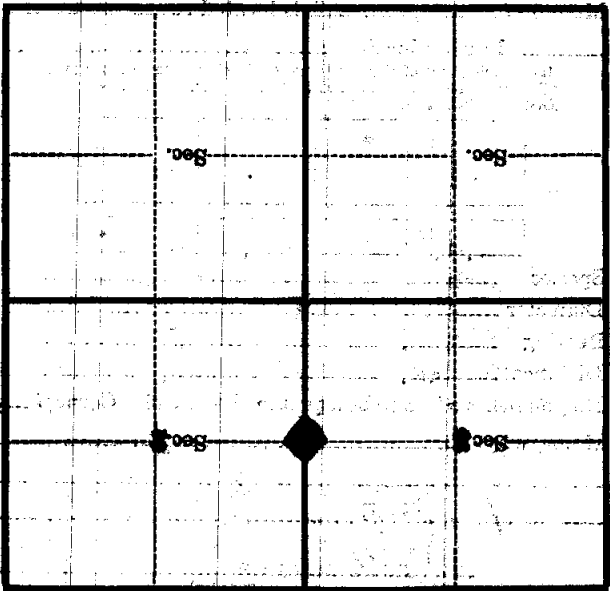
chains detail.

from which this Corner bears

side of

tree inches diameter, on the

Metal Location Poster is on a



(Make sketch of topography near Corner)

Mor. C-17

T. 106 N. R. 10 W.

U. S. Department of Agriculture
FOREST SERVICE

C-17
017

Chippewa NATIONAL FOREST

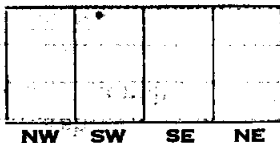
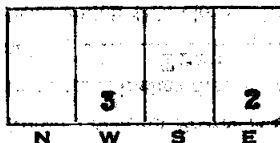
CORNERS OF THE PUBLIC SURVEY

T. 145 N. R. 30 W. 5th Mer.
Quarter Corner common to Sections

2 and 3
Corner consists of a Metal Cap (not) in place

State condition Good

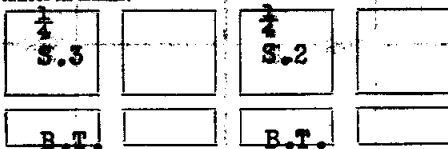
Dimensions above ground 8 inches
Sketch grooves, letters, figures, or notches, on proper face or edge.
CARDINAL POSITION DIAGONAL POSITION



Mound of _____ is located _____

Pits are located _____

Sketch markings of Bearing Trees (or Rocks) in proper box and fill blanks below, giving bearings from Corner to Trees and Distances in Links.



Species Ash W. Pine Stub

Diameter 4" (5" high) 6"

Bearing S8 W. S67 E.

Distance 38 Lks. 15 Lks.

Do you believe this to be a genuine Land Office Corner? Yes

If not, why? _____

Harold Hennes

(Signature)

Mar. 19, 1937

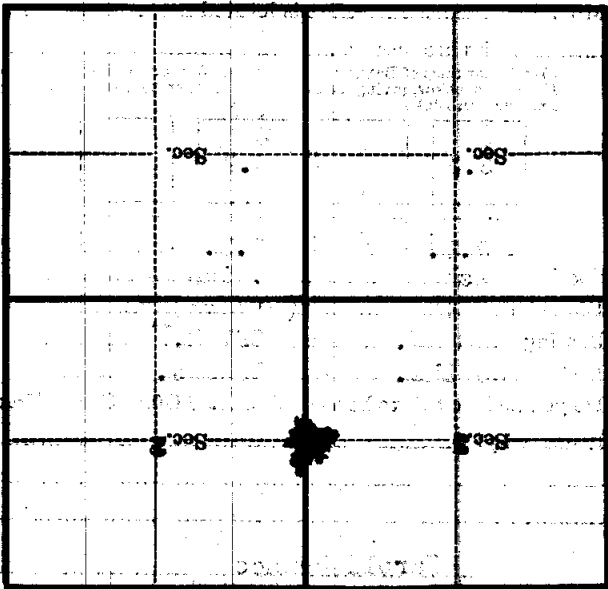
(Date)

(Title)

C-17

Section 36
T. 145 N. R. 30 W. S. 5th

Metal Location Poster is on a
tree 4 inches diameter, on the
side of
Tree
from which this Corner bears
SS W.
SS
chains distant.
Give any further facts which will aid in finding this
Corner again.



(Make sketch of topography near Corner)