

A13

U. S. Department of Agriculture

FOREST SERVICE

Posted

Chippewa NATIONAL FOREST

CORNERS OF THE PUBLIC SURVEY

T145¹/46^N R. 30^W 5th Mer.

Section Corner common to Sections

3, 4, 33, and 34

Corner consists of *Not found* (not) in place

State condition *Probably torn out by road*

Dimensions above ground _____ inches

Sketch grooves, letters, figures, or notches, on proper face or edge.

CARDINAL POSITION

DIAGONAL POSITION

--	--	--	--

--	--	--	--

N W S E

NW SW SE NE

Mound of _____ is located _____

Pits are located _____

Sketch markings of Bearing Trees (or Rocks) in proper box and fill blanks below, giving bearings from Corner to Trees and Distances in Links.

Species *No B.Ts*

Diameter _____

Bearing _____

Distance _____

Do you believe this to be a genuine Land Office Corner? *Yes*

If not, why? _____

J. A. Gjelhaug

(Signature)

2-8-35

(Date)

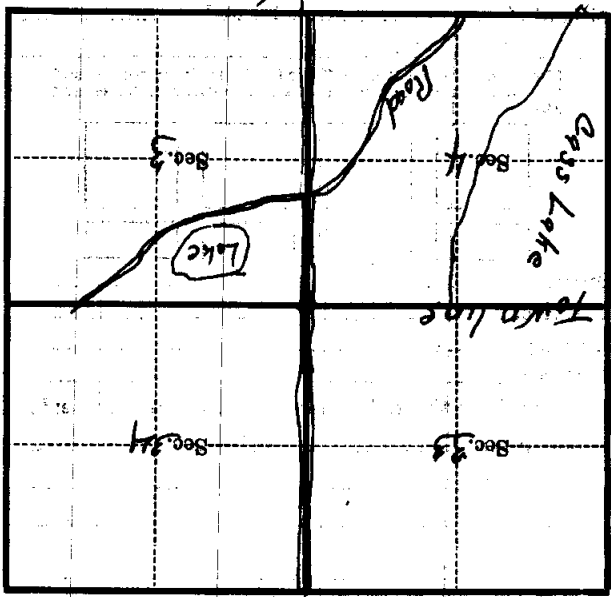
Tech. Eng.

(Title)

by *D. J. Sutton*

Corner again.

Give any further facts which will aid in finding this
chains distant.
from which this Corner bears
side of
tree inches diameter, on the
Metal Location Poster is on a *No. 10 stake*



(Make sketch of topography near Corner)

T. 1145146N R. 30W

5th

A-13
Mer.