

U. S. DEPARTMENT OF AGRICULTURE
FOREST SERVICE

Posted

NATIONAL FOREST

CORNERS OF THE PUBLIC SURVEY

T. 145 R. 28 Mer.

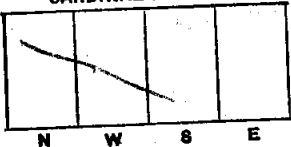
Section Corner common to Sections
27, 28, 33, and 34

DESCRIPTION OF CORNER

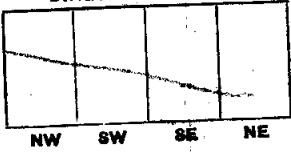
Corner consists of a 70 Hardwood stake
9000 Corner stakes
good.

Dimension above ground Approx. 3'6" inches.
Sketch grooves, letters, figures, or notches, on proper face or edge.

CARDINAL POSITION



DIAGONAL POSITION



Mound of _____ is located _____

Pits are located _____

Sketch markings of Bearing Trees (or Rocks) in proper box and fill blanks below, giving bearings from Corner to Trees and Distances in Links.

Species Del. Jam

Diameter 10'

Bearing —

Distance —

Do you believe this to be a genuine Land Office Corner? Yes

If not, why? _____

Frank Elliot
T. A.

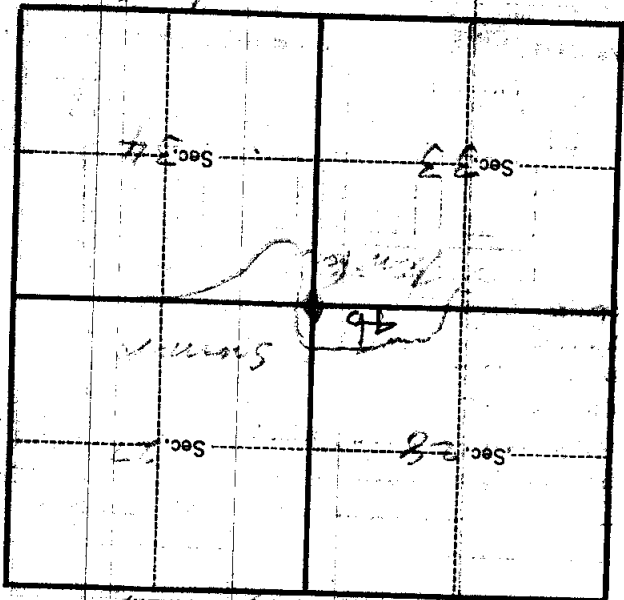
1/6/34 R. O. Taylor
Signature

1-28-28
Date.

Corner again.
 This post is sitting in a meadow
 approx 100 ft or more any brush
 or trees. It was scribbled & dated
 Feb. 1928.

Give any further facts which will aid in finding this
 chains distant.

from which this Corner bears
 side of *John A. Fleming Tr.*
 tree 10 inches diameter, on the
 Metal Location Poster is on a *Post*



(Make sketch of topography near corner.)

9-2027

T. 14 S. / R. 28 W. S. Mer.

U. S. Department of Agriculture
FOREST SERVICE

already posted

Chippewa NATIONAL FOREST

CORNERS OF THE PUBLIC SURVEY

T. 145 N R. 28 W 5th Mer.

58c

Corner common to Sections

27, 28, 33, and 34

Corner consists of a Hardwood stake in place
State condition good

Dimensions above ground Approx 3' 6" inches

Sketch grooves, letters, figures, or notches, on proper face or edge.

CARDINAL POSITION

DIAGONAL POSITION

--	--	--	--

N W S E

--	--	--	--

NW SW SE NE

Mound of _____ is located _____

Pits are located _____

Sketch markings of Bearing Trees (or Rocks) in proper box and fill blanks below, giving bearings from Corner to Trees and Distances in Links.

Species _____

Diameter _____

Bearing _____

Distance _____

Do you believe this to be a genuine Land Office Corner? YFS

If not, why? _____

Frank Elliott

1/6/34
(Date)

T. A.
(Title)

Department of Agriculture
Forest Service

COMMITTEE OF THE FOREST SERVICE

Feb. 2, 1928

This post is setting in a
mud and approx 100 ft or more
from any brush or trees.
If not scribbled and dated
corner again.

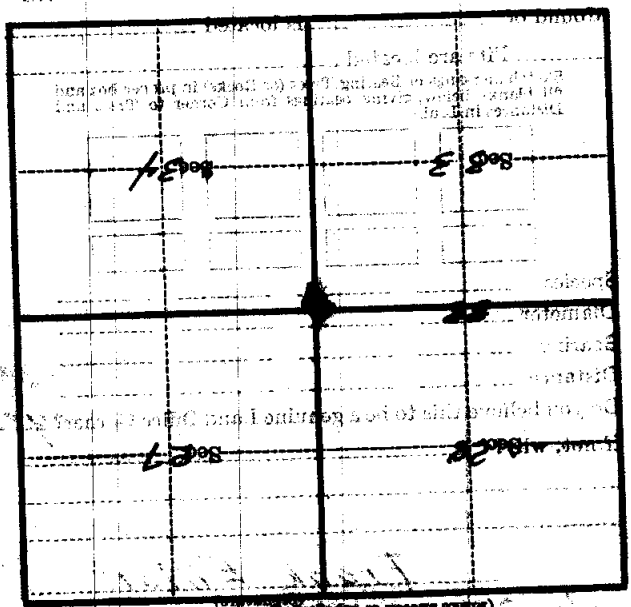
Give any further facts which will aid in finding this
chain's details.

from which this Corner bears

side of

tree inches diameter, on the

Metal Location Poster is on a



(Sketch sketch of topography near Corner)

Form 874-9—Revised May, 1918
U. S. Department of Agriculture
FOREST SERVICE

123

NATIONAL FOREST
CORNERS OF THE PUBLIC SURVEY

T. 145 R. 28 5 Mer.

Sec. Corner common to Sections
27, 28, 33, and 34

Corner consists of a Handwood Stake (not) in place
State condition Good

Dimensions above ground Approx 3' 6" inches.
Sketch grooves, letters, figures, or notches, on proper face or edge.

CARDINAL POSITION

DIAGONAL POSITION

--	--	--	--

N W S E

--	--	--	--

NW SW SE NE

Mound of _____ is located _____

Pits are located _____

Sketch markings of Bearing Trees (or Rocks) in proper box and fill blanks below, giving bearings from Corner to Trees and Distances in Links.

Species _____
Diameter _____
Bearing _____
Distance _____

Do you believe this to be a genuine Land Office Corner? Yes

If not, why? _____

Frank Elliott

(Signature)

T. A.

(Title)

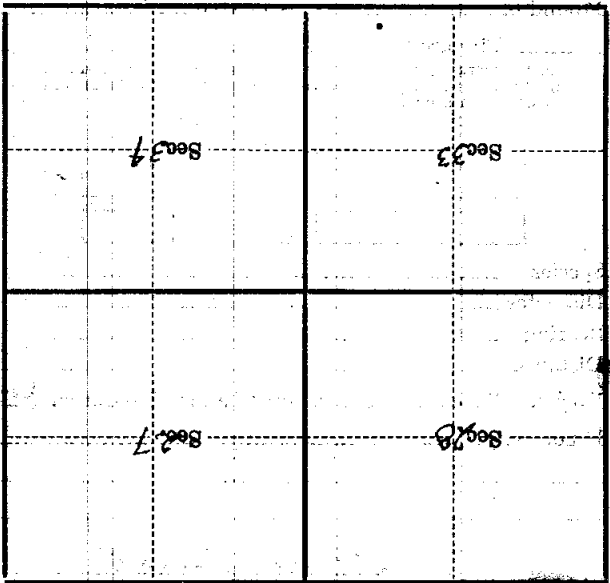
Jan 6/34
(Date)

V-13

This post is being in a
road and about 100 feet from
the main road on the left. It was
located on Feb 18 1928

Corner again.

Metal Location Poster is on a
tree inches diameter, on the
side of
from which this Corner bears
chains distant.
Give any further facts which will aid in finding this



(Make sketch of topography near Corner)