

U. S. Department of Agriculture
FOREST SERVICE

Chippewa NATIONAL FOREST

CORNERS OF THE PUBLIC SURVEY

T. 145N R. 28W 5th Mer.

1/4 section Corner common to Sections
20, and 29

Corner consists of a scribed square (not) state in place
State condition fair

Dimensions above ground _____ inches

Sketch grooves, letters, figures, or notches, on proper face or edge.

CARDINAL POSITION

DIAGONAL POSITION

--	--	--	--

N W S E

--	--	--	--

NW SW SE NE

Mound of _____ is located _____

Pits are located _____

Sketch markings of Bearing Trees (or Rocks) in proper box and fill blanks below, giving bearings from Corner to Trees and Distances in Links.

Species Jack Pine

Diameter _____

Bearing NW

Distance 50'

Do you believe this to be a genuine Land Office Corner? yes

If not, why? _____

Paul Moeller
(Signature)

Dec 7, 1935
(Date)

Technical Foreman
(Title)

UNITED STATES GEOLOGICAL SURVEY
FOUNDED 1879

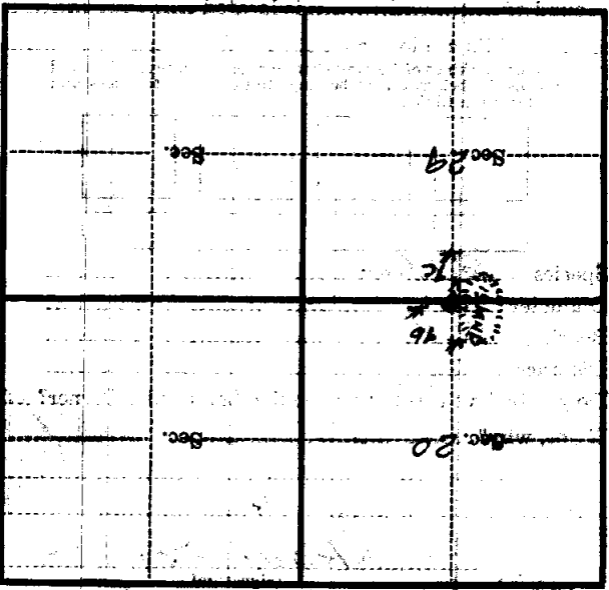
YORK & STUBBS ART CO. 201 N. 3RD ST. PHILA. PA.
CORNER AGAIN!

Give any further facts which will aid in finding this

NOTE: obtains distant.
from which this Corner bears

side of *SE*
tree inches diameter, on the *W* corner

Metal Location Poster is on a *Stact Pine*



(Make sketch of topography near Corner)

T. 146 N. R. 28 W. 576 Mer.

U. S. Department of Agriculture

FOREST SERVICE

Chippewa NATIONAL FOREST P.

CORNERS OF THE PUBLIC SURVEY

T. 145 N R. 28 W 5th Prin. Mer.

1/4 section Corner common to Sections 20 and 29

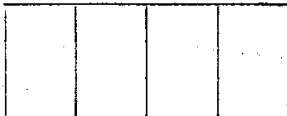
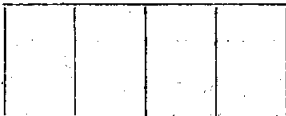
Corner consists of a scribed square stake (not) in place State condition fair

Dimensions above ground inches.

Sketch grooves, letters, figures, or notches, on proper face or edge.

CARDINAL POSITION

DIAGONAL POSITION



N W S E

NW SW SE NE

Mound of is located

Pits are located

Sketch markings of Bearing Trees (or Rocks) in proper box and fill blanks below, giving bearings from Corner to Trees and Distances in Links.



Species Jack Pine Diameter Bearing NW Distance 50'

Do you believe this to be a genuine Land Office Corner? Yes If not, why?

Paul Moller (Signature)

Technical Foreman (Title)

Dec. 7, 1933 (Date)

R-7

Corner again.

Give any further facts which will aid in finding this

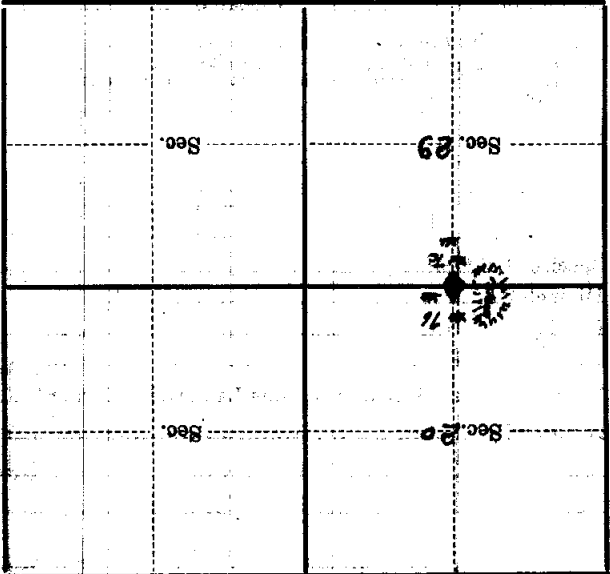
~~showing distant.~~ 40 ft

from which this Corner bears SE

side of $\frac{1}{4}$ corner

tree inches diameter, on the NW

Metal Location Poster is on a **Back pin**



(Make sketch of topography near Corner)

T. 145 N R. 28 W STATE Mer.

U. S. Department of Agriculture

FOREST SERVICE

P

Chippewa NATIONAL FOREST

CORNERS OF THE PUBLIC SURVEY

T. 145N. R. 28W 5th P. Mer.

Quarter Corner common to Sections

20, and 29

Corner consists of a scribed Post (~~and~~) in place

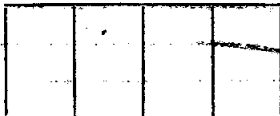
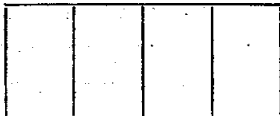
State condition Fair Set new Post.

Dimensions above ground 48 inches

Sketch grooves, letters, figures, or notches, on proper face or edge.

CARDINAL POSITION

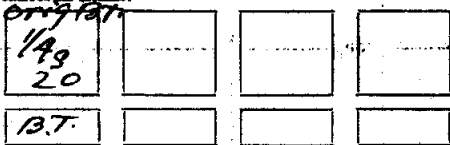
DIAGONAL POSITION



Mound of _____ is located _____

Pits are located _____

Sketch markings of Bearing Trees (or Rocks) in proper box and fill blanks below, giving bearings from Corner to Trees and Distances in Links.



Species J. Pini

Diameter 8"

Bearing N. 10 E.

145 Distance 31

Do you believe this to be a genuine Land Office Corner? Yes

If not, why? _____

J. A. Gielhang

(Signature)

Jr. Civil Eng.

(Title)

5/12/37

Faint, illegible text at the top of the page, possibly bleed-through from the reverse side.

Corner again.

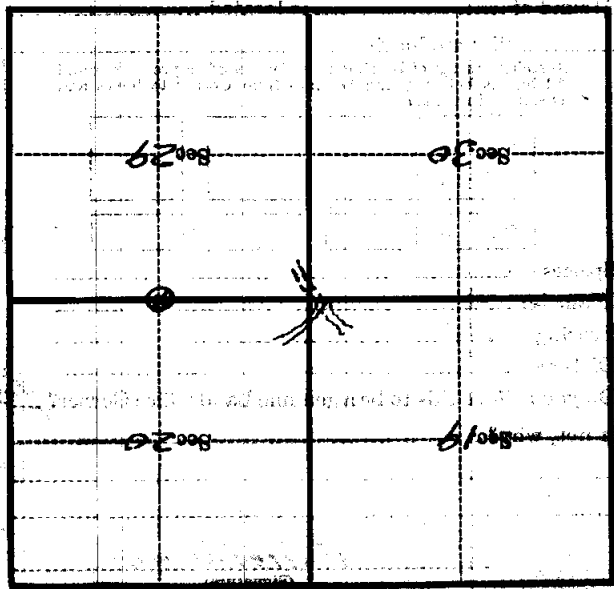
Give any further facts which will aid in finding this corner distant.

from which this Corner bears *N 79° E*

side of *Tree*

tree *8* inches diameter, on the *East*

Metal Location Poster is on a *Tree*



(Make sketch of topography near Corner)

T. 145 N. R. 28 W. 5th P. Mer.