

U. S. Department of Agriculture  
FOREST SERVICE

Chippewa NATIONAL FOREST

CORNERS OF THE PUBLIC SURVEY

T. 145 N R. 26-27 W 5<sup>th</sup> Mer.

Section Corner common to Sections  
24, 25, 19, and 30

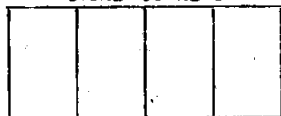
Corner consists of a 2" Pipe Brass cap (not) in place  
State condition New

Dimensions above ground 18 inches.

Sketch grooves, letters, figures, or notches, on proper face or edge.

STONE CORNERS

METAL CORNERS



N W S E

Mound of \_\_\_\_\_ is located \_\_\_\_\_

Pits are located \_\_\_\_\_

Sketch markings of Bearing Trees (or Rocks) in proper box and fill blanks below, giving bearings from Corner to Trees and Distances in Links.

145  
R 27  
S 24  
NEW  
BT

145  
R-27  
S-25  
NEW  
BT

145  
R-26  
S-30  
NEW  
BT

145  
R-26  
S 19  
NEW  
BT

Species	Elm	Elm	Elm	Elm
Diameter	7"	7"	7"	8"
Bearing	N 13 1/2 W	S 68 1/2 W	S 22 E	N 73 1/2 E
Distance	76.5 Ft.	42.2'	54.2'	60.3'

Do you believe this to be a genuine Land Office Corner? Yes

If not, why? Found 2-Orig. B.T.s  
Corner is on north bank of  
creek.

Joseph F. Lausehe  
(Signature)

11-19-58  
(Date)

Eng. Aid.  
(Title)

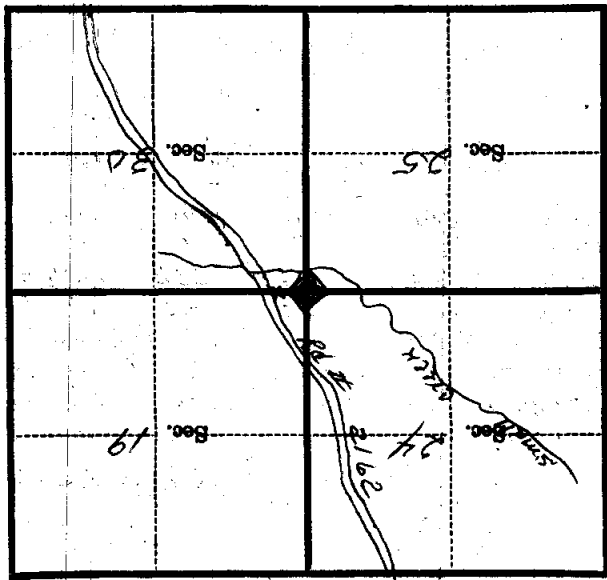
R-25

Mer.

T. 145N R. 26-27W

6-7

(Make sketch of topography near Corner and show section line markers thus "X")



Metal Location Poster is on a M. OAKS

tree 19 inches diameter, on the NORTH

side of tree

this Corner bears No. 74 E, 42.75' Chains

(Bearing) (Distance)

and is on

a BIRCH on the RD # 2162

(Tree, post, etc.)

located 400' chains E., N., S. from Sec. Cor.; 1/2 Cor.; 1/2 Chain Cor.

(Cross out nonapplicable)

Give any further facts needed to find Corner again:

I big rd line EAST TO

RD # 2162