

**U. S. DEPARTMENT OF AGRICULTURE
FOREST SERVICE**

Posted
A-9

----- NATIONAL FOREST

CORNERS OF THE PUBLIC SURVEY

T. 14S + 146N R. 27W S. 5 Mer.

Sectian

Corner common to Sections

4, 5, 32, and 33

DESCRIPTION OF CORNER

Corner consists of a Square Stake not scribed

Dimension above ground 3X3X30 inches.

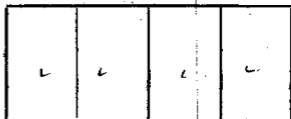
Sketch grooves, letters, figures, or notches, on proper face or edge.

CARDINAL POSITION

DIAGONAL POSITION



N W S E



NW SW SE NE

Mound of ----- is located -----

Pits are located -----

Sketch markings of Bearing Trees (or Rocks) in proper box and fill blanks below, giving bearings from Corner to Trees and Distances in Links.

T146N R27W S32



T146N R27W S32

BT



BT

BT

Species Noxway ----- Nox. Stump Noxway

Diameter 13" ----- 9" 13"

Bearing N36°W ----- S96°E N44°E

Distance 30 Links ----- 29 Links 30 Links

Do you believe this to be a genuine Land Office Corner? Yes

If not, why? -----

Er. C. Groenbeck

Signature.

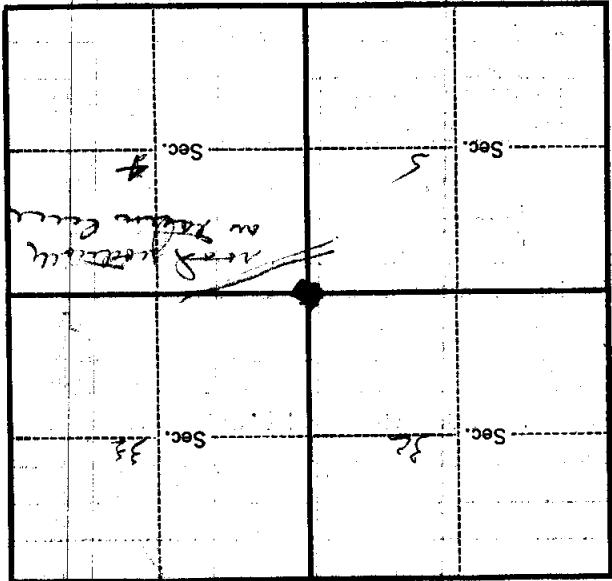
11-2-29

Date.

Chief of Part

Title.

(Make sketch of topography near Corner.)



Metal Location Poster is on a *Minnesota* *Map* on a *tree* *16* inches diameter, on the *NE* side of *5th* *St* from which this Corner bears *N 20° E* *1/3* chains distant.

Give any further facts which will aid in finding this Corner again.

Corner is in a tree about 16 inches diameter on the NE side of 5th St from which this corner bears N 20° E 1/3 chains distant.

U. S. DEPARTMENT OF AGRICULTURE
FOREST SERVICE

Posted

Chippewa NATIONAL FOREST A-9

CORNERS OF THE PUBLIC SURVEY

T. 145N R. 27W 5th Mer.

Section Corner common to Sections

32, 33, 4, and 5

Corner consists of a Squared Tree (not) in place

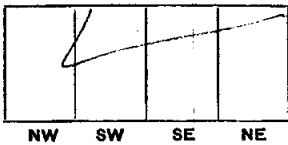
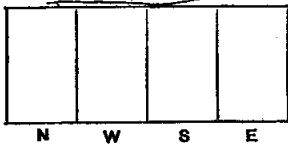
State condition Dead

Dimensions above ground 4" x 4" x 8 ft inches.

Sketch grooves, letters, figures, or notches, on proper face or edge.

CARDINAL POSITION

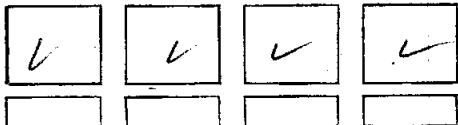
DIAGONAL POSITION



Mound of _____ is located _____

Pits are located _____

Sketch markings of Bearing Trees (or Rocks) in proper box and fill blanks below, giving bearings from Corner to Trees and Distances in Links.



Species _____

Diameter _____

Bearing V V V V

Distance _____

Do you believe this to be a genuine Land Office Corner? No

If not, why? No stake or bearing trees left. Chainage, Field notes, & line blases indicate its position is OK.

Edward J. Messer

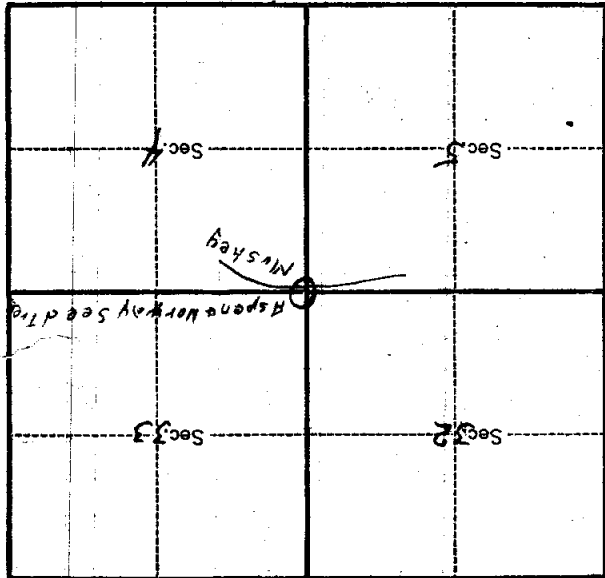
Signature.

10-4-29
Date.

Estimator
Title.

T. 145 N. R. 27 W. S. 4 Mer.

(Make sketch of topography near corner.)



Metal Location Poster is on a spruce

tree 9 inches diameter, on the North

side of E-W line

from which this Corner bears North

10 chains distant

Give any further facts which will aid in finding this

Corner again.

corner is just on the edge of

a Muskey.

**U. S. Department of Agriculture
FOREST SERVICE**

A-9

Chippewa NATIONAL FOREST

CORNERS OF THE PUBLIC SURVEY

T. 145-46N R. 27W 5th Mer.

Section Corner common to Sections
4, 5, 32, and 33

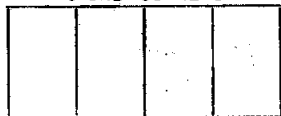
Corner consists of a 2" Pipe Brass Cap in place
State condition NEW

Dimensions above ground 18 inches.

Sketch grooves, letters, figures, or notches, on proper face or edge.

STONE CORNERS

METAL CORNERS



N W S E

Mound of _____ is located _____

Pits are located _____

Sketch markings of Bearing Trees (or Rocks) in proper box and fill blanks below, giving bearings from Corner to Trees and Distances in Links.

T146
R-27
S-32
NEW
BT

T145
R-27
S-5
NEW
BT

T145
R-27
S-4
NEW
BT

T146
R-27
S-33
NEW
BT

0219
BT

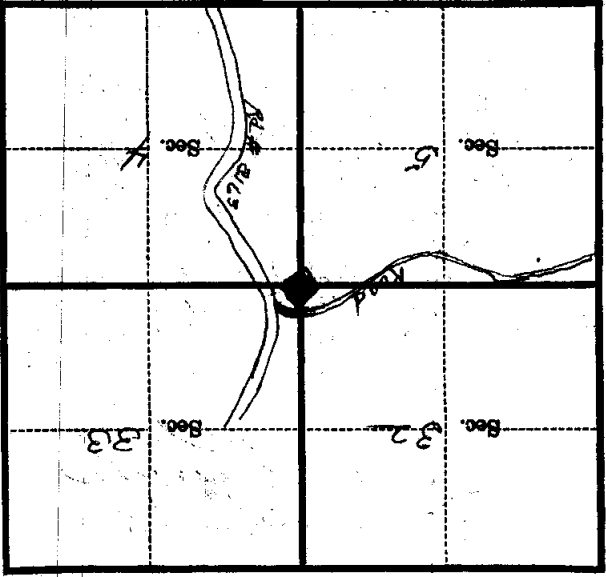
Species	<u>R. Pine</u>	<u>W. Pine</u>	<u>R. Pine</u>	<u>R. Pine</u>	<u>R. P.</u>
Diameter	<u>8"</u>	<u>9"</u>	<u>8"</u>	<u>8</u>	<u>1 1/2"</u>
Bearing	<u>N. 62 W</u>	<u>S. 68 W</u>	<u>S. 5 E</u>	<u>N. 11 E</u>	<u>N. 42 E</u>
Distance	<u>28.6'</u>	<u>30.2'</u>	<u>25.4'</u>	<u>43.5</u>	<u>30.0</u>

Do you believe this to be a genuine Land Office Corner? Yes
If not, why? _____

Joseph L. Sanchez
(Signature)

7-3-58
(Date)

Eng. Dir.
(Title)



(Make sketch of topography near Corner and show section line markers thus "X")

Metal Location Poster is on a N. Pine tree 9 inches diameter, on the North side of the this Corner bears N 29 E, 13.8 F from which (Bearing) (Distance) Section line marker between Secs. 32 and 33 is on a Post on the R.R. 2163 (Tree, post, etc.) located 310 FT Chains 1, 2, 3, from Sec. Cor.; 1/4 Cor.; Witness Cor. (Cross out nonapplicable) Give any further facts needed to find Corner again: I blazed line East and North to Rds

A-9
 Mer.

5-2

T. 145-46 N. R. 27 W.