

U. S. DEPARTMENT OF AGRICULTURE  
FOREST SERVICE

Posted  
T-1

Minnesota NATIONAL FOREST

CORNERS OF THE PUBLIC SURVEY

T. 145 R. 27428W 54P Mer.

1/4

Corner common to Sections

25, and 30

DESCRIPTION OF CORNER

Corner consists of a Norway Pine Stk.

Dimension above ground 3" dia 3' high inches.

Sketch grooves, letters, figures, or notches, on proper face or edge.

CARDINAL POSITION

DIAGONAL POSITION

N	W	S	E

	<u>1/4</u>		<u>1/4</u>
	<u>S</u>		<u>S</u>
NW	SW	SE	NE

Mound of \_\_\_\_\_ is located \_\_\_\_\_

Pits are located \_\_\_\_\_

Sketch markings of Bearing Trees (or Rocks) in proper box and fill blanks below, giving bearings from Corner to Trees and Distances in Links.

<u>1/4</u>			

Species N.P.

Diameter Faded stump about 15" dia.

Bearing S 120 W

Distance 13 Lks

Do you believe this to be a genuine Land Office Corner? yes

If not, why? \_\_\_\_\_

Doris F. Kirkman

Signature.

Forest Ranger

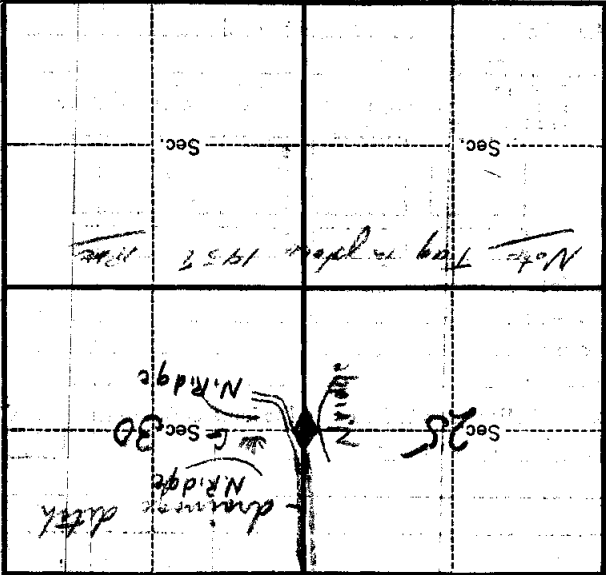
Title.

Date.

5/17/28

(Make sketch of topography near corner.)

T. 74 N. R. 27 E. 28 W. 5th Mer.



Metal Location Poster is on a Norway Pine

16 inches diameter, on the North-east

side of tree

from which this Corner bears

N470E

100 chains distant.

Give any further facts which will aid in finding this

Corner again.

The distance from the corner to the tree

is about 100 chains and the tree

is about 100 chains and the tree

is about 100 chains and the tree

is about 100 chains and the tree

is about 100 chains and the tree

is about 100 chains and the tree

is about 100 chains and the tree