

U. S. Department of Agriculture

FOREST SERVICE

33

123

Chippewa NATIONAL FOREST

A1

CORNERS OF THE PUBLIC SURVEY

T. 145 R. 27 & 28 5 Mer.

Section Corner common to Sections

36-(145-27) and 36-(145-28)

Corner consists of a Iron Pipe (not) in place

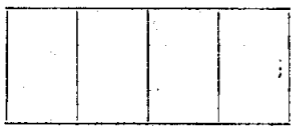
State condition Good

Dimensions above ground 18 inches.

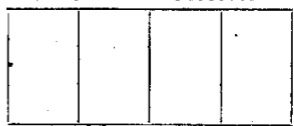
Sketch grooves, letters, figures, or notches, on proper face or edge.

CARDINAL POSITION

DIAGONAL POSITION



N W S E



NW SW SE NE

Mound of is located

Pits are located

Sketch markings of Bearing Trees (or Rocks) in proper box and fill blanks below, giving bearings from Corner to Trees and Distances in Links.



old B.T.



old B.T.

Species	NP	NP	NP	NP
Diameter	14"	14"	16"	24"
Bearing	NE	NE	NE	NW
Distance	1/2 ch.	1/2 ch.	1/2 ch.	1/2 ch.

Do you believe this to be a genuine Land Office Corner? Yes

If not, why?

J. P. Zasada

(Signature)

12-18-33

(Date)

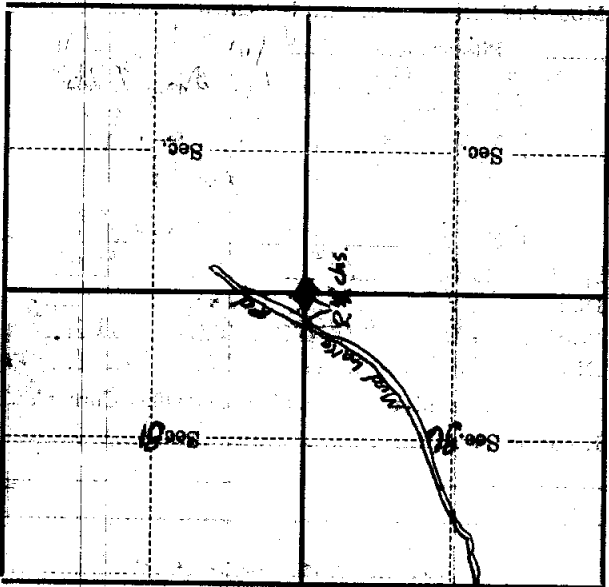
Jack Lerner

(Title)

White post on Mud Lake Rd. 2 1/2 chs N of Section corner  
Corner again.

Give any further facts which will aid in finding this chaining distant.

1/2  
from which this Corner bears SW.  
side of Section corner  
tree 16" inches diameter, on the NE  
Metal Location Poster is on a Norway Pine



(Make sketch of topography near Corner)