

U. S. DEPARTMENT OF AGRICULTURE

FOREST SERVICE

R-9

Chippewa NATIONAL FOREST

CORNERS OF THE PUBLIC SURVEY

T. 145 N R. 26 W 5th Mer.

Section

Corner common to Sections

20, 21, 28, and 29

Corner consists of a Nothing (not) in place

State condition

Dimensions above ground \_\_\_\_\_ inches.

Sketch grooves, letters, figures, or notches, on proper face or edge.

CARDINAL POSITION

DIAGONAL POSITION

--	--	--	--

--	--	--	--

N W S E

NW SW SE NE

Mound of \_\_\_\_\_ is located \_\_\_\_\_

Pits are located \_\_\_\_\_

Sketch markings of Bearing Trees (or Rocks) in proper box and fill blanks below, giving bearings from Corner to Trees and Distances in Links.

T145 R26 S
------------------

T145 S
-----------

--

--

BT
----

BT
----

--

--

Species Norway P. Norway P

Diameter 20 19

Bearing N.W. S.E.

Distance \_\_\_\_\_

Do you believe this to be a genuine Land Office Corner? Yes

If not, why? \_\_\_\_\_

Edward J. Green

Signature.

9-5-29

Date.

Estimator

Title. R-9 8-3027

	Sec. 29		
	Sec. 28		
	Sec. 20		
	Sec. 21		

Metal Location Poster is on a Jack Pine

tree 1 inches diameter, on the E

side of corner

from which this corner bears N.W.

chains distant.

Give any further facts which will aid in finding this

Corner again.

Form 874-9—Revised May, 1918  
U. S. Department of Agriculture  
FOREST SERVICE

C.P.  
57  
36  
R-9

NATIONAL FOREST

CORNERS OF THE PUBLIC SURVEY

T. 145 R. 26 5 Mer.

Corner common to Sections

20, 21, 28, and 29

Corner consists of nothing (not) in place

State condition

Dimensions above ground \_\_\_\_\_ inches

Sketch grooves, letters, figures, or notches, on proper face or edge.

CARDINAL POSITION

DIAGONAL POSITION

--	--	--	--

N W S E

--	--	--	--

NW SW SE NE

Mound of \_\_\_\_\_ is located \_\_\_\_\_

Pits are located \_\_\_\_\_

Sketch markings of Bearing Trees (or Rocks) in proper box and fill blanks below, giving bearings from Corner to Trees and Distances in Links.


Species \_\_\_\_\_

Diameter \_\_\_\_\_

Bearing \_\_\_\_\_

Distance \_\_\_\_\_

Do you believe this to be a genuine Land Office Corner? \_\_\_\_\_

If not, why? \_\_\_\_\_

(Signature)

(Date)

(Title)

U.S. GEOLOGICAL SURVEY

FIELD NOTES

CORNER OF THE ...

Corner again.

Give any further facts which will aid in finding this

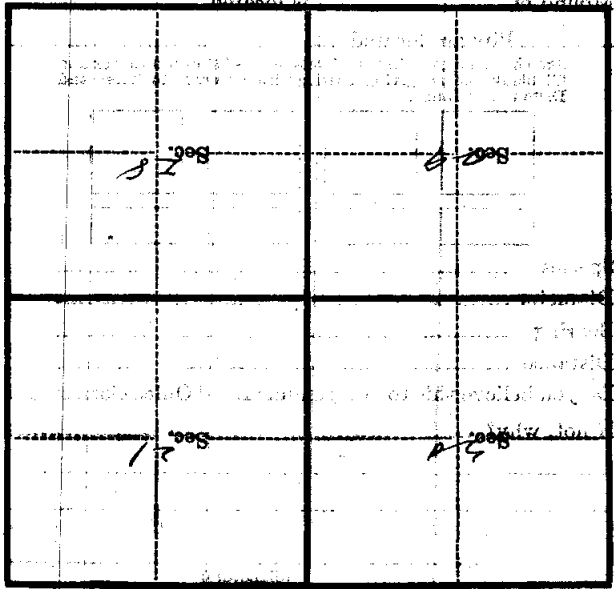
chain's distant

from which this Corner bears

side of

tree inches diameter, on the

Metal Location: Poster is on a



(Make sketch of topography near Corner)

U. S. Department of Agriculture

FOREST SERVICE

*Copy*  
**R-9**

NATIONAL FOREST

CORNERS OF THE PUBLIC SURVEY

T. 145 R. 26 Mer.

Sec Corner common to Sections  
20, 21, 28, and 29

Corner consists of a Post (not) in place

State condition Good

Dimensions above ground 30 inches

Sketch grooves, letters, figures, or notches, on proper face or edge.

CARDINAL POSITION

DIAGONAL POSITION

--	--	--	--

N W S E

--	--	--	--

NW SW SE NE

Mound of \_\_\_\_\_ is located \_\_\_\_\_

Pits are located \_\_\_\_\_

Sketch markings of Bearing Trees (or Rocks) in proper box and fill blanks below, giving bearings from Corner to Trees and Distances in Links.

<u>5</u>
<u>20</u>

--

--

--

<u>Mound</u>
--------------

--

--

--

Species N.P.

Diameter 12"

Bearing NW

Distance 1/2 mi

Do you believe this to be a genuine Land Office Corner? Yes

If not, why? \_\_\_\_\_

Z. A. 2020 Da

(Signature)

1-6-34

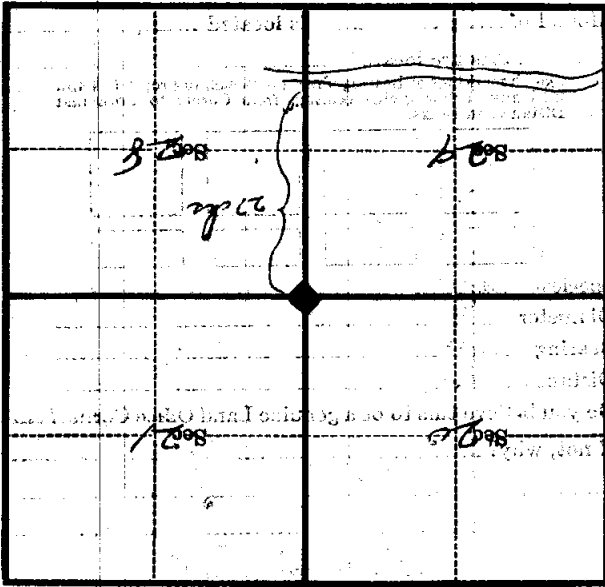
(Date)

(Title)

COMMITTEE ON THE BUREAU OF LANDS

Mississippi Rapids Road - 27th St. S. E.

Corner again.  
Give any further facts which will aid in finding this  
chains distant.  
from which this Corner bears  
side of  
tree inches diameter, on the  
Metal Location Poster is on a



(Make sketch of topography near Corner)

**U. S. Department of Agriculture**  
**FOREST SERVICE**

*Chippewa* NATIONAL FOREST

R 9

**CORNERS OF THE PUBLIC SURVEY**

T. 145 N R. 26 W 5<sup>th</sup> Mer.

Section \_\_\_\_\_ Corner common to Sections  
20, 21, 28, and 29

Corner consists of a wood post (set) in place  
State condition Good

Dimensions above ground 30 inches.

Sketch grooves, letters, figures, or notches, on proper face or edge.

CARDINAL POSITION

DIAGONAL POSITION

--	--	--	--

N      W      S      E

--	--	--	--

NW      SW      SE      NE

Mound of \_\_\_\_\_ is located \_\_\_\_\_

\_\_\_\_\_ Pits are located \_\_\_\_\_

Sketch markings of Bearing Trees (or Rocks) in proper box and fill blanks below, giving bearings from Corner to Trees and Distances in Links.

5 20			
Blazed			

Species N.P. \_\_\_\_\_

Diameter 12" \_\_\_\_\_

Bearing NW \_\_\_\_\_

Distance 1/2 ch. \_\_\_\_\_

Do you believe this to be a genuine Land Office Corner? Yes

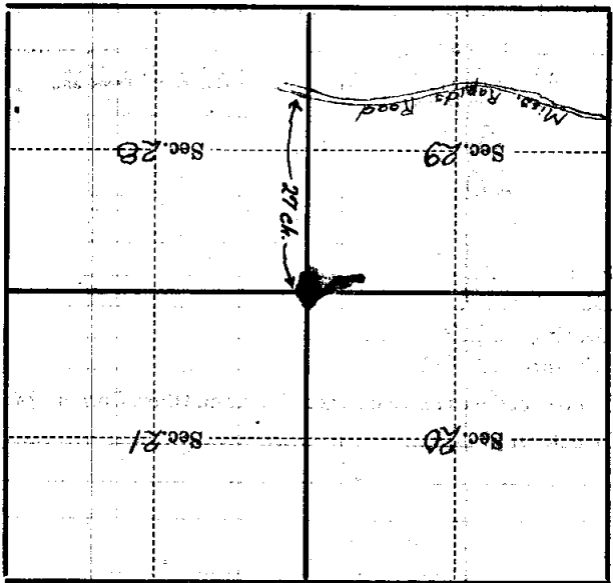
If not, why? \_\_\_\_\_

J. A. Zasada  
(Signature)

1-6-34 \_\_\_\_\_  
(Date)                      John Forman  
(Title)

Corner again.  
A white location poster  
is on the Mississippi Rapids  
Road which is 27 chs. south of  
corner

Metal Location Poster is on a  
tree inches diameter, on the  
side of  
from which this Corner bears  
chains distant.



(Make sketch of topography near Corner)

T. 145N R. 26W Mer. 5<sup>th</sup>



2

U. S. Department of Agriculture

FOREST SERVICE

Chippewa NATIONAL FOREST R-9

CORNERS OF THE PUBLIC SURVEY

T. 145 N R. 26 W 5<sup>th</sup> Mer.

Section \_\_\_\_\_ Corner common to Sections  
20, 21, 28, and 29

Corner consists of a Wood Post (net) in place  
State condition Good

Dimensions above ground 30 inches.

Sketch grooves, letters, figures, or notches, on proper face or edge.

CARDINAL POSITION

DIAGONAL POSITION

N	W	S	E

NW	SW	SE	NE

Mound of \_\_\_\_\_ is located \_\_\_\_\_

Pits are located \_\_\_\_\_

Sketch markings of Bearing Trees (or Rocks) in proper box and fill blanks below, giving bearings from Corner to Trees and Distances in Links.

S 20			
<u>Blazed</u>			

Species NP \_\_\_\_\_  
Diameter 12" \_\_\_\_\_  
Bearing NW \_\_\_\_\_  
Distance 1/2 ch \_\_\_\_\_

Do you believe this to be a genuine Land Office Corner? Yes

If not, why? \_\_\_\_\_

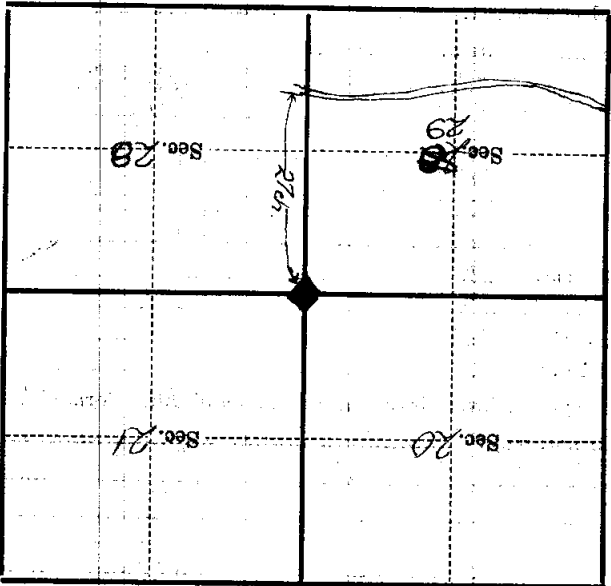
J. A. Zasada  
(Signature)

1-6-34 \_\_\_\_\_  
(Date)

Tech. Foreman  
(Title)

Corner again.  
A white location post is on the Mississippi Rapids Road which is 27 chs. S. of corner

Metal Location Poster is on a tree inches diameter, on the side of from which this Corner bears chains distant. Give any further facts which will aid in finding this



(Make sketch of topography near Corner)

T. 145 N. R. 26 W. 5<sup>th</sup> Mer.