

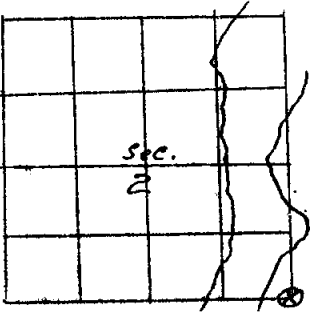
Posted

E-21

E-21

Section Corners Secs 1-2-11-12

T 144 N. R 31 W. Mer. 5th



Corner is

Brass Caped Cement

Height 3" above Gr.

Dia 5"

Marked S 251 S 11 S 12

BEARING TREES

	T. 144 N. R. 31 W.	S. 1	Old Govt. B.T.	S. 11
Marks	<u>B.T.</u>	<u>B.T.</u>	<u>B.T.</u>	<u>B.T.</u>
Species	<u>W. Pine</u>	<u>W. Pine</u>	<u>Tam. St.</u>	<u>W. Pine</u>
Diameter	<u>8"</u>	<u>14"</u>	<u>14"</u>	<u>18"</u>
Bearing	<u>N. 57° W.</u>	<u>N. 13° E.</u>	<u>N. 80° E.</u>	<u>S. 28° W.</u>
Dist. ⁴⁷⁰⁰	<u>106.116.</u>	<u>197 1/2 116.</u>	<u>20 1/2 116.</u>	<u>136 1/2 116.</u>

Metal poster on _____

Remarks:

Date 5/7/34 Signed J. A. Grolhaug



[Faint, illegible text, possibly bleed-through from the reverse side of the page.]

[Faint, illegible text, possibly bleed-through from the reverse side of the page.]