

U. S. Department of Agriculture  
FOREST SERVICE

*Posted*  
41

*Shippewa* NATIONAL FOREST

CORNERS OF THE PUBLIC SURVEY

T. *144N* R. *30W* Mer. *5th*

*lot* Corner common to Section

*and 31*

Corner consists of a *Br Laped pipe 1"* (not) in place

State condition *good*

Dimensions above ground \_\_\_\_\_ inches

Sketch grooves, letters, figures, or notches, on proper face or edge.

CARDINAL POSITION

DIAGONAL POSITION



N W S E



NW SW SE NE

Mound of \_\_\_\_\_ is located \_\_\_\_\_

Pits are located \_\_\_\_\_

Sketch markings of Bearing Trees (or Rocks) in proper box and fill blanks below, giving bearings from Corner to Trees and Distances in Links.



Species \_\_\_\_\_

Diameter *No Bearing Trees*

Bearing \_\_\_\_\_

Distance \_\_\_\_\_

Do you believe this to be a genuine Land Office Corner? *Yes*

If not, why? \_\_\_\_\_

*Dan. B. Ross*

(Signature)

*Compassman*

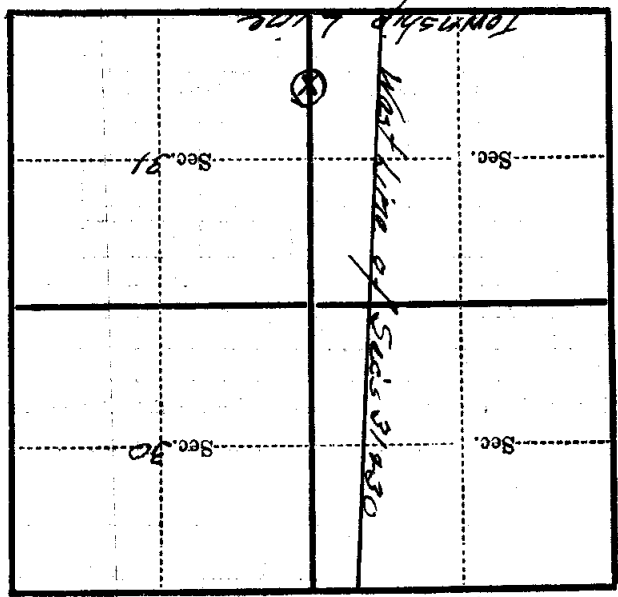
(Title)

*8/20/34*  
(Date)



Corner again.

Give any further facts which will aid in finding this  
chains distant.  
from which this Corner bears  
side of  
tree..... inches diameter, on the  
Metal Location Poster is on a *None*



(Make sketch of topography near Corner)